

George M. Adams

Hatfield

SECTION CORNER

574' SEC. 3 SEC. 2

7.35 chs

2 8 3

Section Line

"Ella C. Patterson"

"Otey Boon"

SE 1/4 NW 1/4 SEC 3
40 AC.

S 1/2 NE 1/4 SEC. 3
63.1 AC.

SW 1/4 NW 1/4 SEC. 2
40 AC.

LOT 2 SEC 2
25.3 AC.

3

HOUSE

FORKS OF CREEK DIVIDING LINE, 209' WEST
1/4 SEC. CORNER

OLD HOUSE (FOUNDATION)
DIVIDING LINE IS 81' WEST

Rock 280'

S.W. Cor Barker D.L.C.

N.W. Cor Jas. Gilmore D.L.C.
N.E. Cor. Lot 3

40 Acres

NE 1/4 SW 1/4 SEC. 3
40 AC.

N 1/2 S.E. 1/4 SEC. 3
63. AC.

NW 1/4 SW 1/4 SEC 2
40 AC.

16.8 AC

NE 1/4 SW 1/4

N 0° 11' W
1321'

SECTION LINE

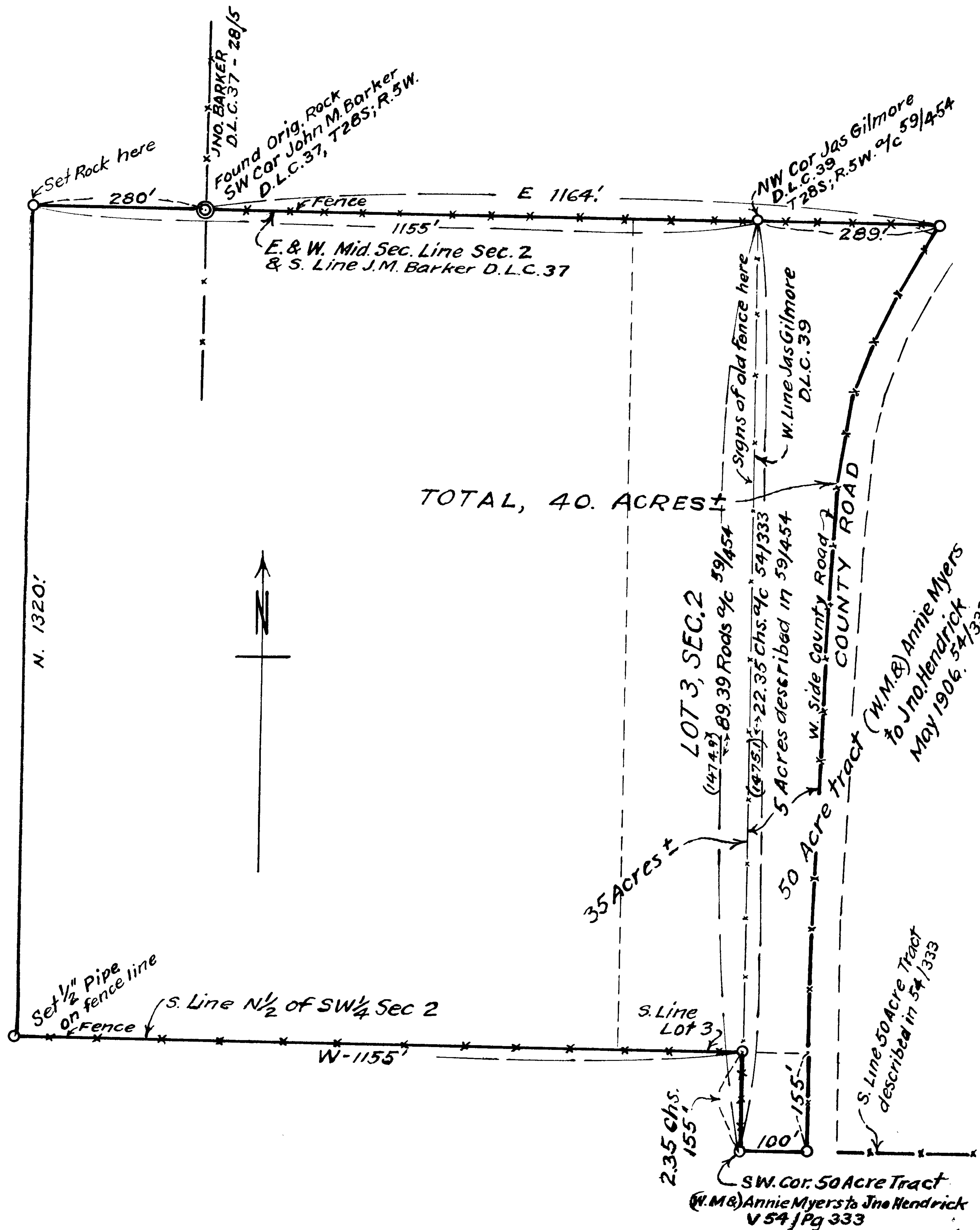
SEC. 3 SEC. 2 SECTION CORNER

SEC 10 SEC 11

COUNTY SURVEYORS FILE DATA
DO NOT REMOVE FROM OFFICE

OTEY BOON ESTATE
IN SEC'S 2 & 3, T. 28 S.; R. 5 W. WM.
DOUGLAS COUNTY ORE
AUG 1941 ABOYER DEP. CO. SUR. SCALE 1"=500'

Duncan



**FORTY ACRE ± PORTION OF
 THE OTEY BOONE ESTATE
 IN THE 5 1/2 SEC 2, T 28S; R 5 W. W.M.
 SCALE, 1"=200 ft. - A. BOYER, DEP. CO. SURVEYOR - MAY, 1941**