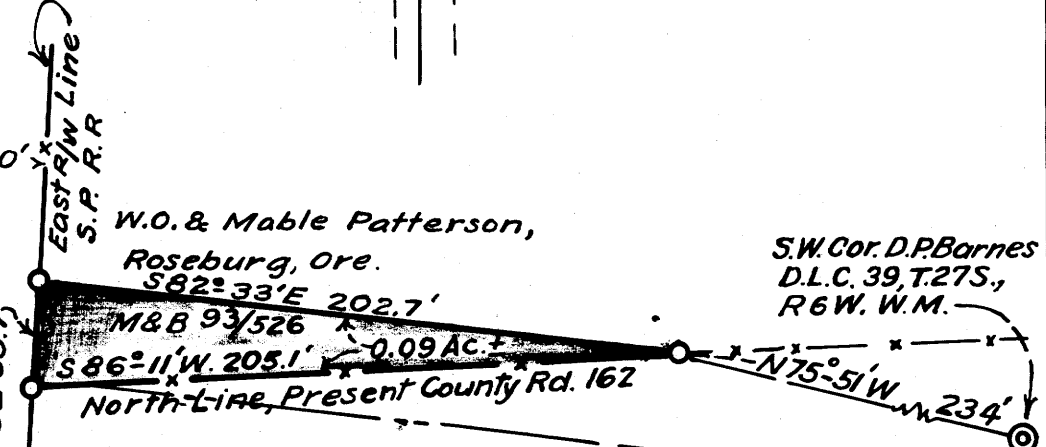
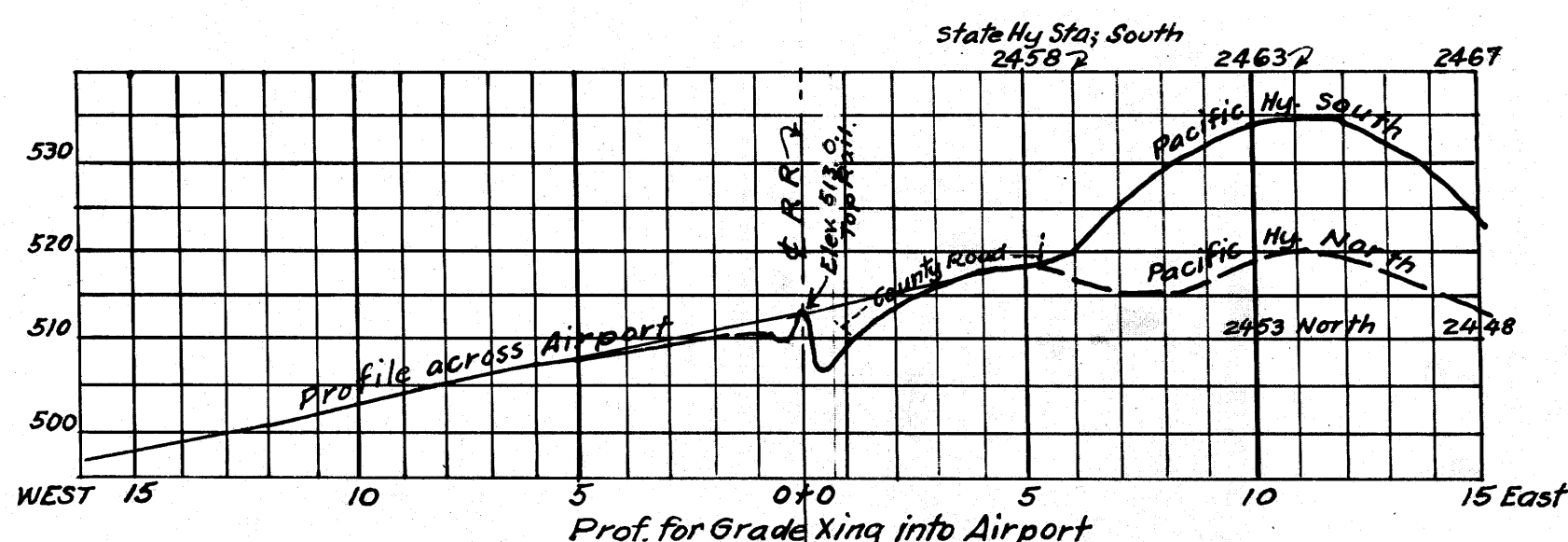
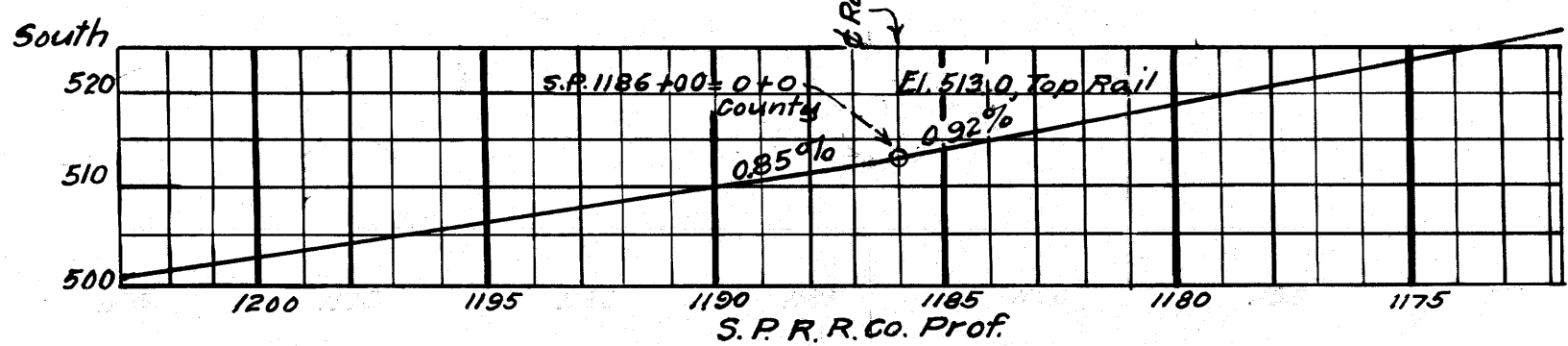
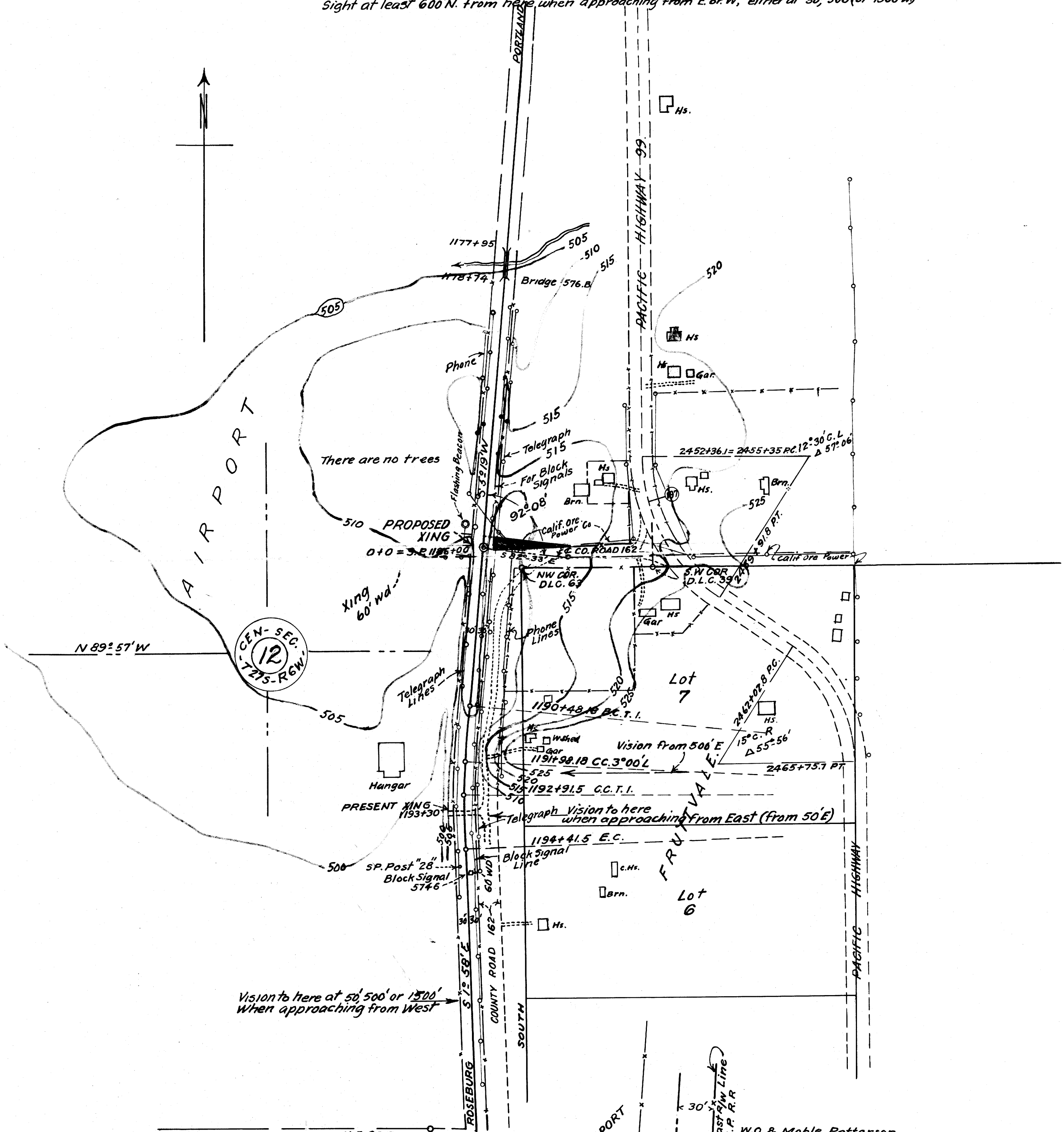


Sight at least 600' N. from here when approaching from E. or W. either at 50, 500 (or 1500' w)



COUNTY SURVEYORS FILE DATA DO NOT REMOVE FROM OFFICE

CITY OF ROSEBURG, DOUGLAS COUNTY, ORE.  
 H. LEPPSTEIN, ENGR  
 GRADE CROSSING APPLIED FOR FROM S.P. R.R. CO. FOR AIRPORT ENTRANCE FROM COUNTY ROAD 162, AT SOU. PAC. STA. 1186+00 IN E 1/2 Sec. 12, T27S; R6W; W.M.  
 Drawn by A-Boyer Plan Scale, 1" = 200 ft.  
 C.S. File No. 36/4 & 35/6 May 1941.