

FILED  
 RECEIVED  
 MAR 20 1957  
 COUNTY SURVEYOR  
 DOUGLAS COUNTY, ORE.

THIS COPY MADE FROM  
 A XEROX 2510  
 DATE 2-14-89

**GRATZ SURVEY**  
 SECTIONS 6, 7, & 8 T 29 S R 4 W  
 SURVEYED & PLATTED BY  
 JAMES R. DAUGHERTY  
 CIVIL - SANITARY ENGINEER  
 214 U.S. BANK BLDG. ROSEBURG, ORE

SCALE 1"=100'

COUNTY SURVEYORS FILE DATA  
 DO NOT REMOVE FROM OFFICE

Sheet 2 of 2  
 June 1949

\* REV. JULY 15, 1949  
 C.S. FILE NO. 42/253 (sheet 1 of 2)  
 MAP FILE M.A. 153 (sheet 2 of 2)

TWP. 29 S. R. 4 W. M.

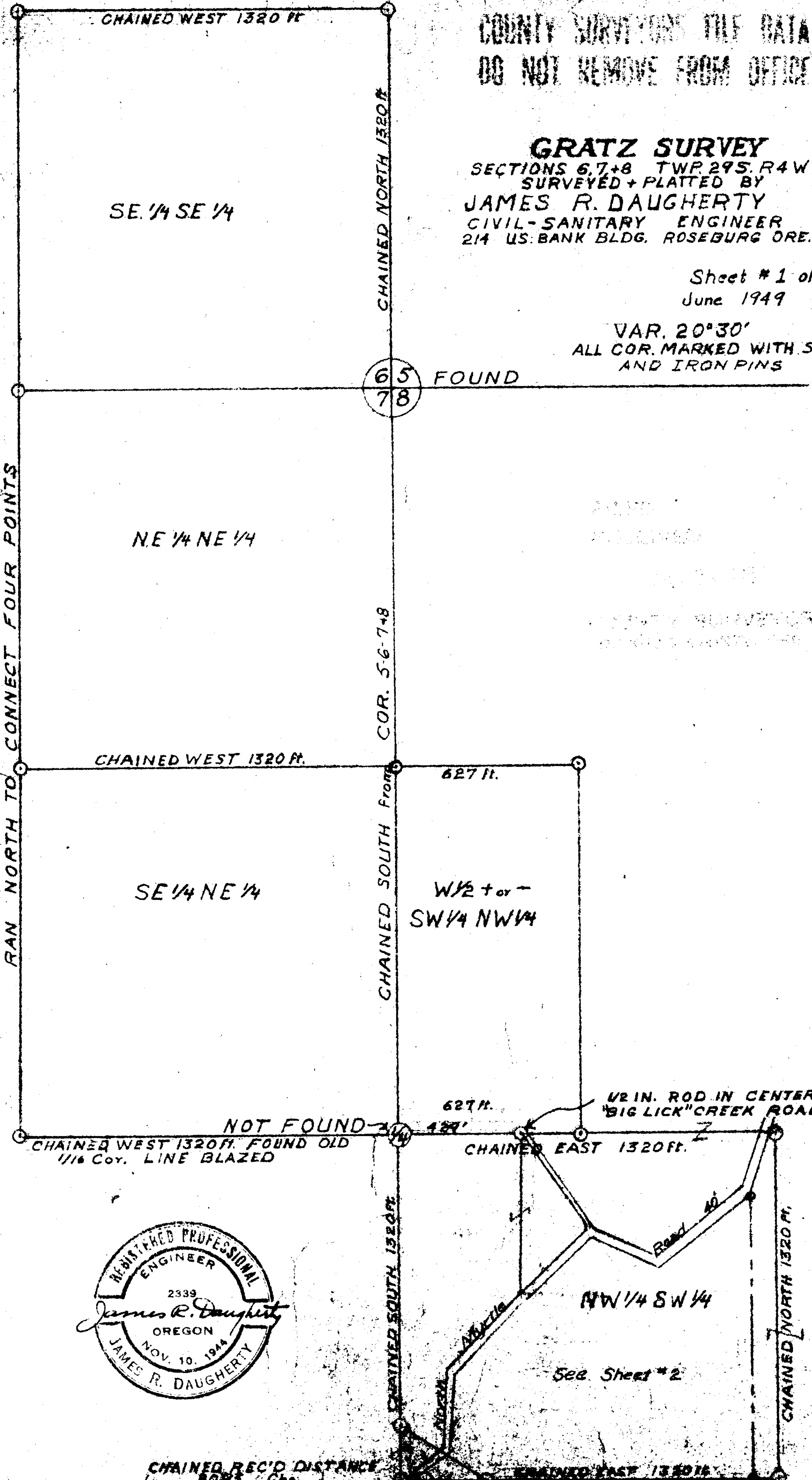
COUNTY SURVEYORS FILE DATA  
DO NOT REMOVE FROM OFFICE

**GRATZ SURVEY**

SECTIONS 6, 7, & 8 TWP. 29 S. R. 4 W. M.  
SURVEYED & PLATTED BY  
**JAMES R. DAUGHERTY**  
CIVIL-SANITARY ENGINEER  
214 U.S. BANK BLDG. ROSEBURG ORE.

Sheet # 1 of 2  
June 1949

VAR. 20°30'  
ALL COR. MARKED WITH STAKES  
AND IRON PINS



RAN NORTH TO CONNECT FOUR POINTS

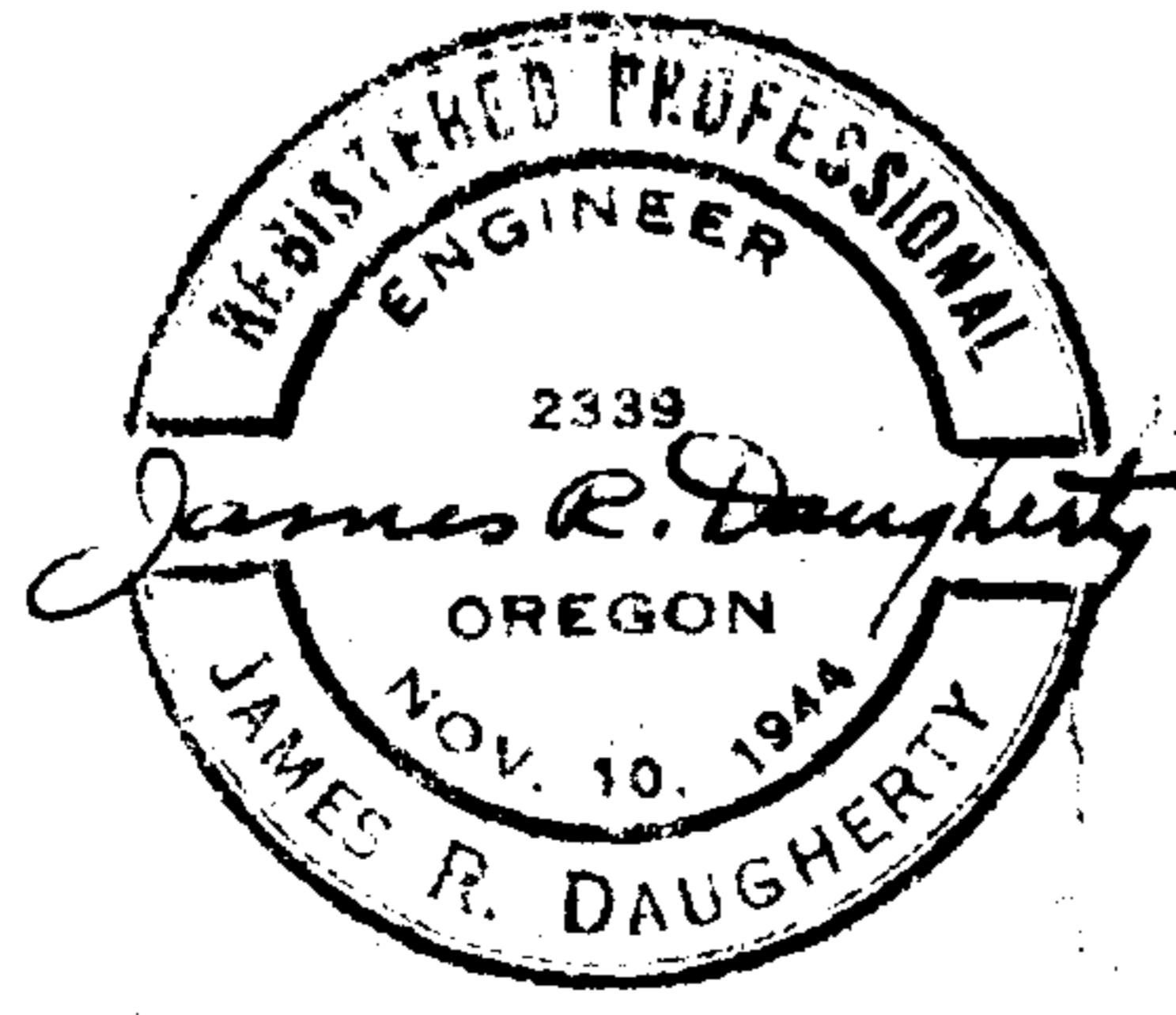
65 FOUND  
78

NE 1/4 NE 1/4

SE 1/4 NE 1/4

W 1/2 + or -  
SW 1/4 NW 1/4

1/2 IN. ROD IN CENTER OF  
"BIG LICK" CREEK ROAD



See Sheet # 2

CHAINED REC'D DISTANCE  
8073  
FOUND

CHAINED EAST 1320 FT.  
CENTER OF CO. ROAD  
FOUND

STARBUCK