

DO NOT REMOVE FROM OFFICE

T21+22S R7W; Sections 2, 3, 34+35

FILED
RECEIVED
MAR 20 1957
COUNTY SURVEYOR
DOUGLAS COUNTY, ORE.

MAP FILE M4 / 52

FB. H-178

Survey of Township Line Between 35+2 and 34+3 and
S 1/2 West Line of 34.

Survey made For Harold Woolley To Determine Lines and Corners.

Wilford N. Haines Registered Surveyor #239

Surveyed by Leo J. Martin Registered Surveyor #363

Scale: 1" = 600'

⊕ Original Corners Found

○ Corners Set

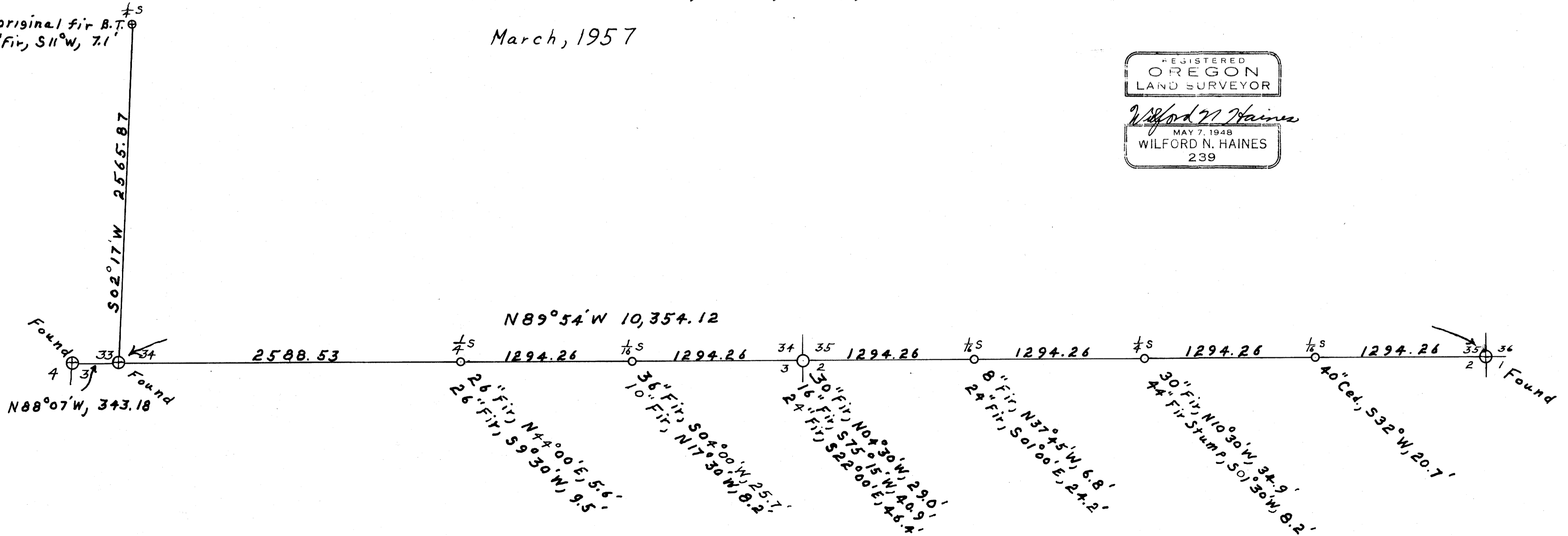
Set 1" x 36" ⊥ rods At All Corners With Brass Cap Inscribed,
"Wilford N. Haines, Survey Point, #239".

March, 1957

REGISTERED
OREGON
LAND SURVEYOR

Wilford N. Haines
MAY 7, 1948
WILFORD N. HAINES
239

Found original fir B.T. ⊕
Scribed 12" Fir, S11°W, 7.1'



MAP FILE M4 / 52

FB. H-178