

FILED  
RECEIVED

JAN 23 1956

COUNTY SURVEYOR  
DOUGLAS COUNTY, ORE.

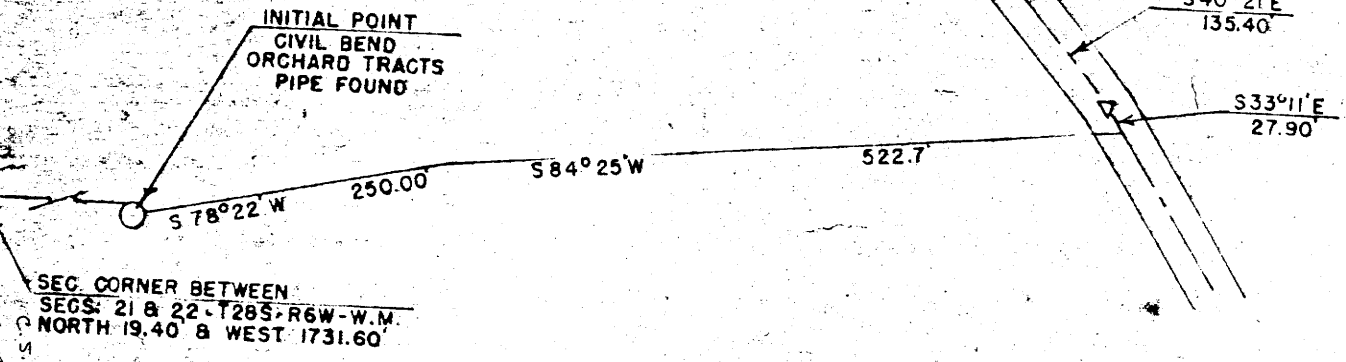
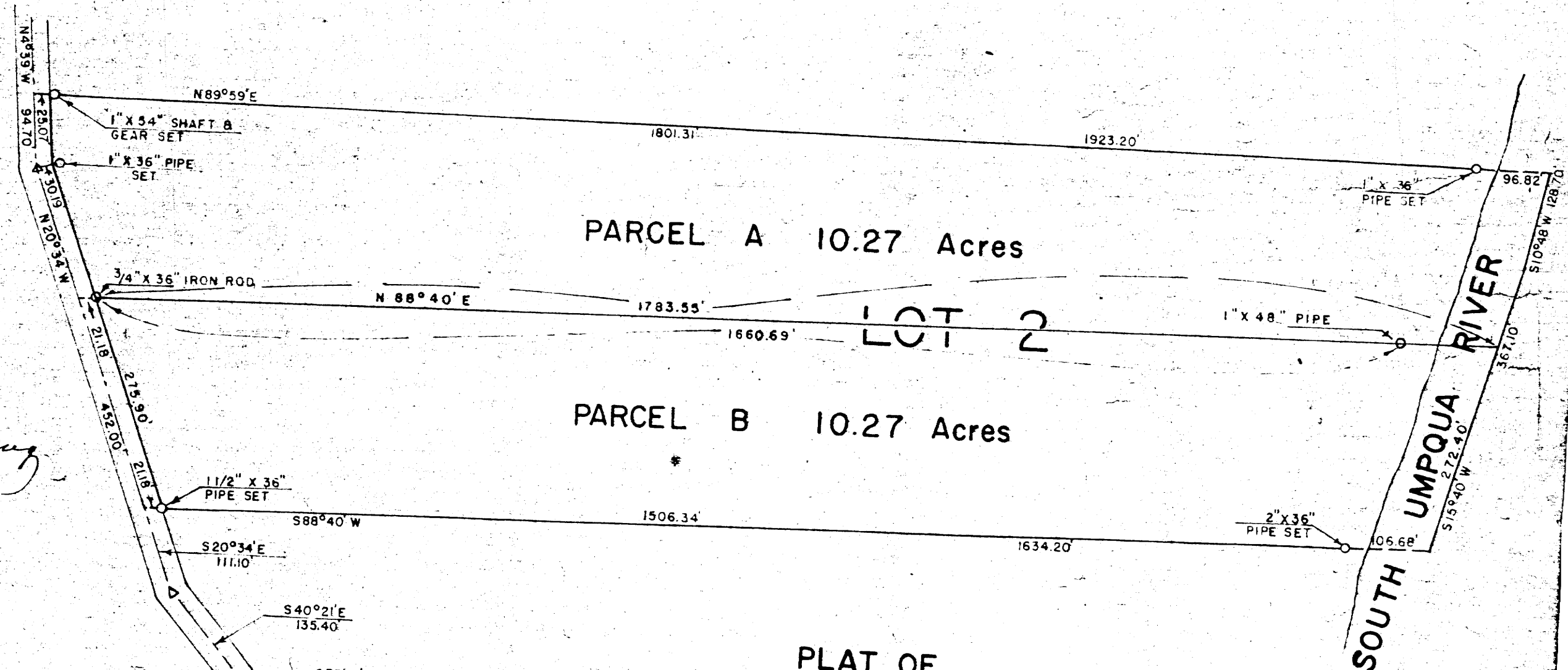
*JMB*

THIS COPY MADE FROM  
A XEROX 2510

DATE 2-8-89

C.S. 42/212  
M 4 - 4

C.S. FILE NO. 42/212  
MAP FILE M 4 - 4



PLAT OF  
**JAMES PROPERTY**  
 BEING LOT 2, CIVIL BEND ORCHARD TRACTS  
 SEC. 22 - T28S-R6W-W.M. - DOUGLAS COUNTY, OREGON  
 SEPTEMBER, 1949 For Jesse James SCALE 1"=150'  
 Revised NOV. 1951 to show PARCELS A & B

COUNTY SURVEYORS FILE DATA  
 DO NOT REMOVE FROM OFFICE

C.S. File No. 42/212

MAP FILE M 4 - 4