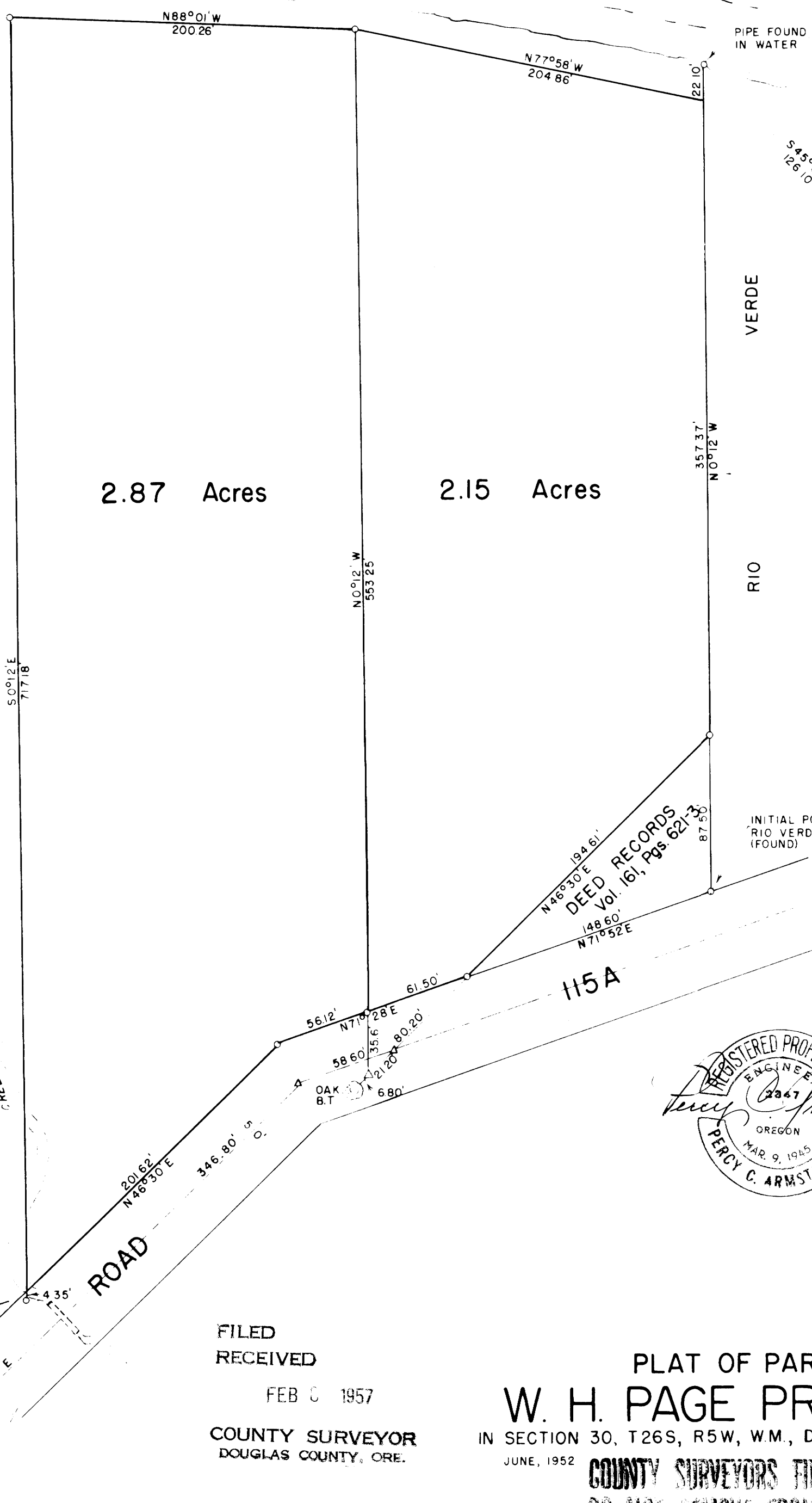


NORTH UMPQUA RIVER



2.87 Acres

2.15 Acres

VERDE RIO

H5A



5/8" x 30" IRON ROD SET

PIPE FOUND IN WATER

PIPE FOUND

INITIAL POINT RIO VERDE (FOUND)

SHAFT FOUND

BOLT FOUND

1/4 SECTION CORNER
SEC 25, T26S, R6W &
SEC 30, T26S, R5W, W.M.



FILED
RECEIVED
FEB 6 1952
COUNTY SURVEYOR
DOUGLAS COUNTY, ORE.

PLAT OF PART OF
W. H. PAGE PROPERTY
IN SECTION 30, T26S, R5W, W.M., DOUGLAS COUNTY, OREGON
JUNE, 1952
COUNTY SURVEYORS FILE DATA
DO NOT REMOVE FROM OFFICE
SCALE 1" = 60'

MAP FILE M4 138

C.S. File No. 42/239

MAP FILE M4 138