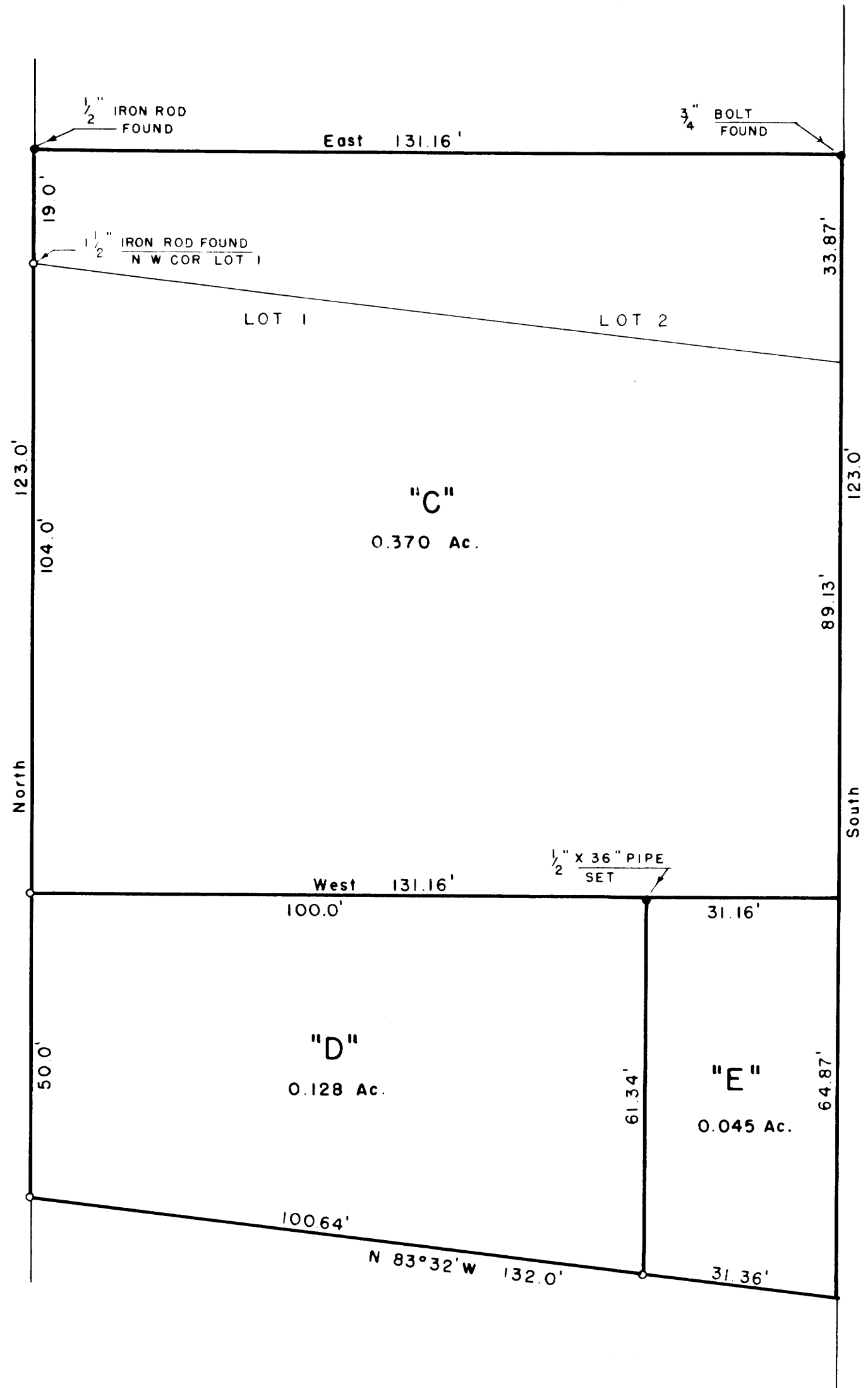


HARRISON ST.



FILED
RECEIVED
FEB 8 1957
COUNTY SURVEYOR
DOUGLAS COUNTY, ORE.



o = 5/8" x 36" rod set



PLAT OF PART OF
A.S. WALLACE PROPERTY
IN LOTS 1 & 2, BLOCK 3, A.J. BELLOWS FIRST ADD'N TO WEST ROSEBURG,
ROSEBURG, OREGON

March 1952
COUNTY SURVEYORS FILE DATA
DO NOT REMOVE FROM OFFICE
Scale 1" = 20'

C. S. File No. 42/235

MAP FILE M4134