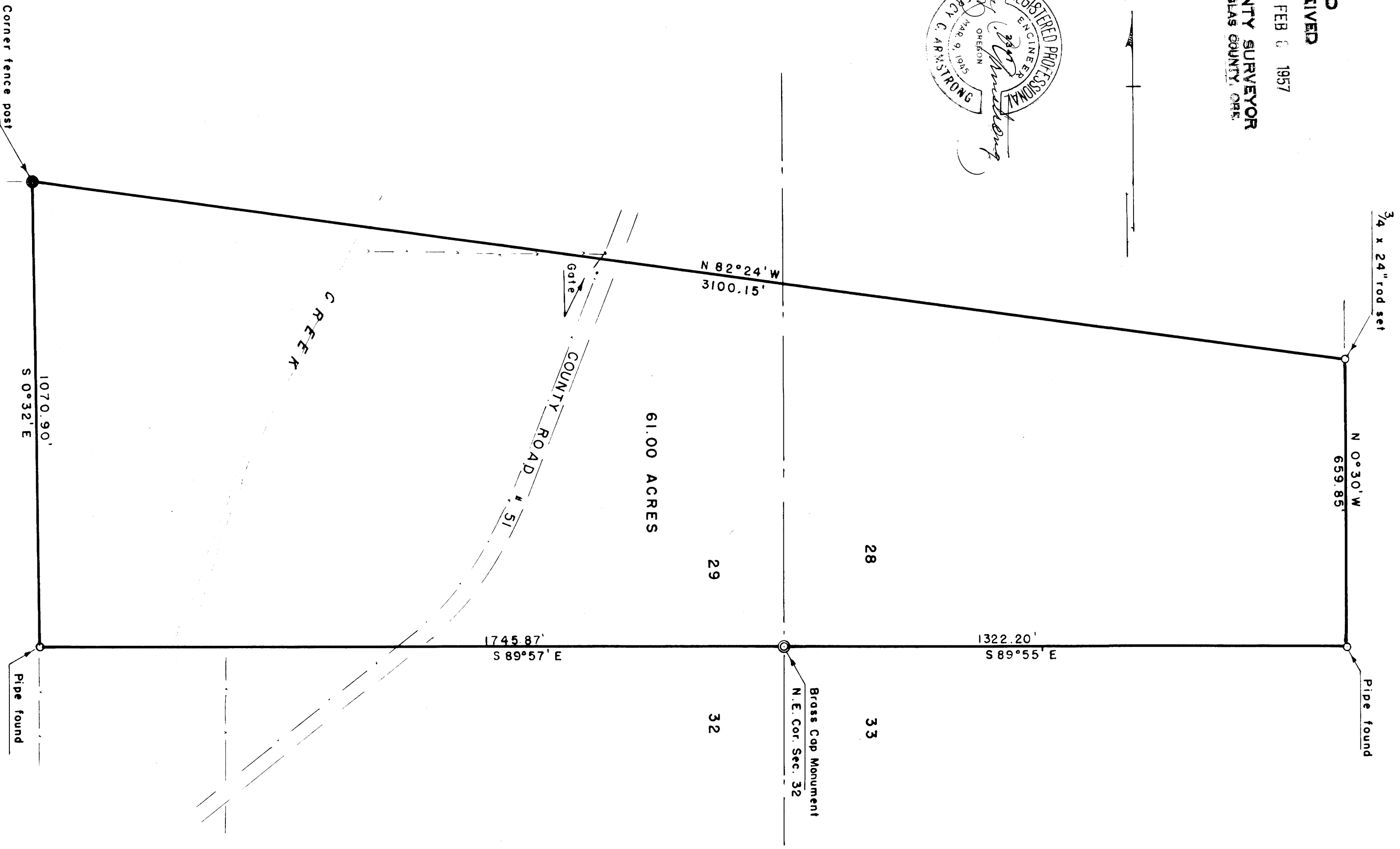


FILED
RECEIVED
FEB 6 1957
COUNTY SURVEYOR
DOUGLAS COUNTY, ORE.



COUNTY SURVEYORS FILE DATA
DO NOT REMOVE FROM OFFICE

PLAT OF PART OF

G.W. COOPER PROPERTY

IN SECS 28 & 29 - T 27 S - R 6 W W.M. Douglas Co., Ore.

Sept. 1952

Scale 1" = 200'

C.S. File No. 42/233