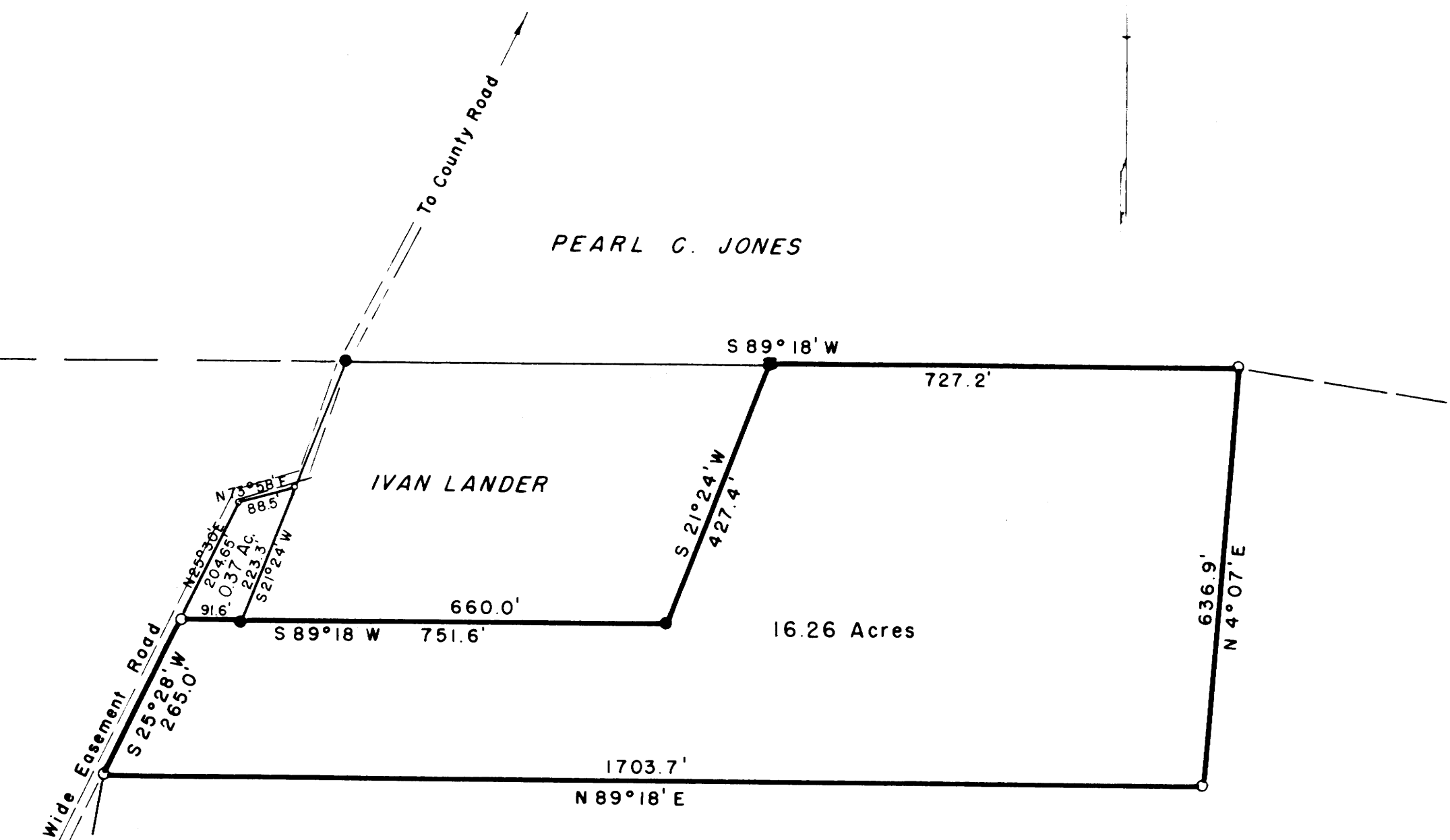


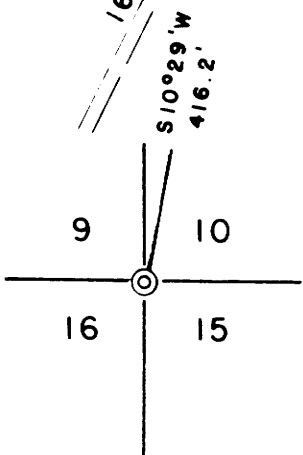
PEARL C. JONES

IVAN LANDER

16.26 Acres



FILED
RECEIVED
FEB 8 1957
COUNTY SURVEYOR
DOUGLAS COUNTY, ORE.



- = Pipe found
- = Bolt found
- = 3/4 x 30" Pipe set
- = 3/4" x 30" Iron rod set



PLAT OF PART OF BENJ. F. JONES PROPERTY

IN SEC 10 - T 27 S R 6 W W.M. Douglas Co., Ore.
SEPT. 1951
NOVEMBER, 1952

SCALE 1" = 200'

COUNTY SURVEYORS FILE DATA
DO NOT REMOVE FROM OFFICE

C. S. File No. 42/39