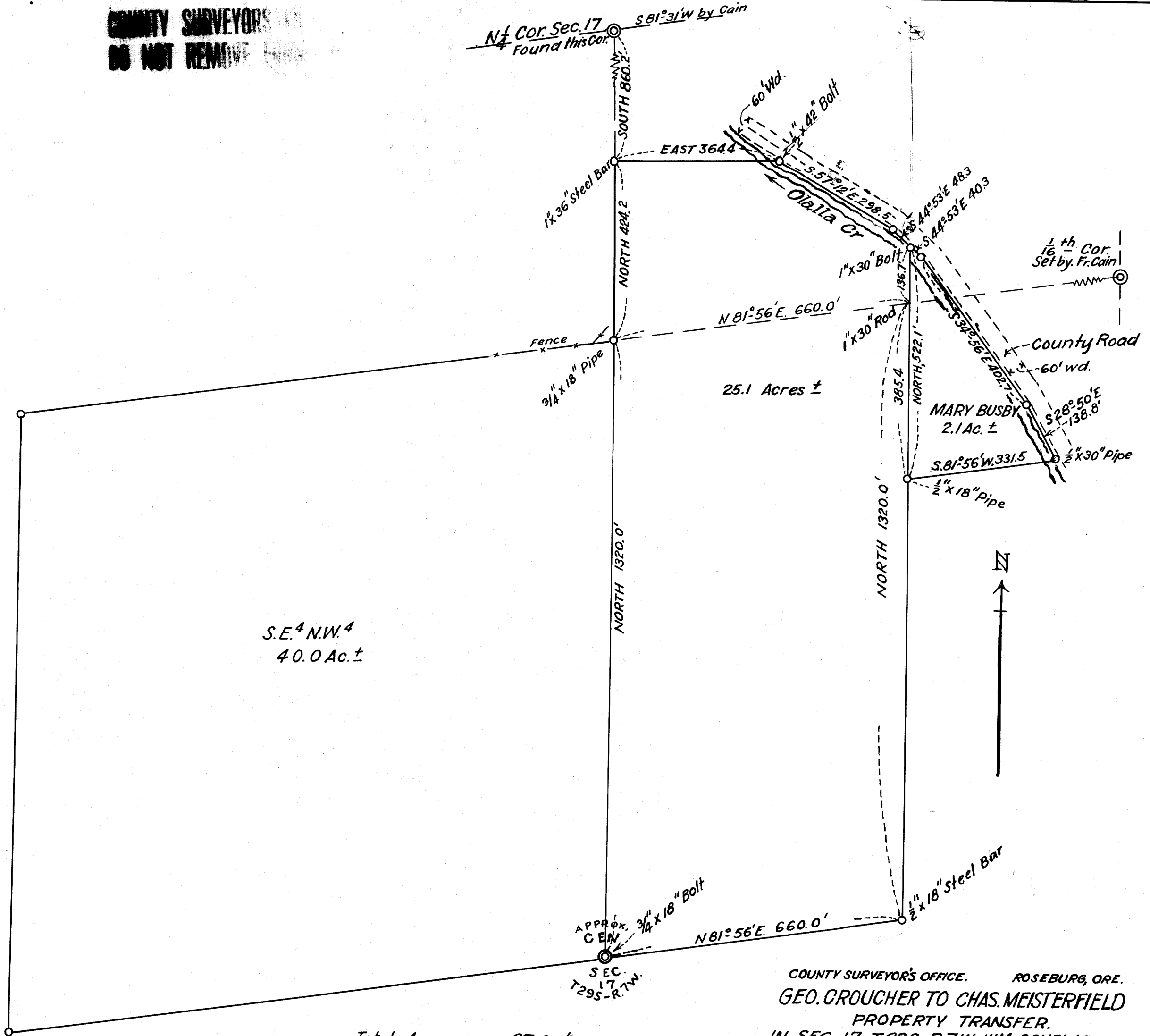


COUNTY SURVEYORS  
DO NOT REMOVE

$N\frac{1}{4}$  Cor. Sec. 17  
Found this Cor.  $S 81^{\circ} 31' W$  by Cain



S.E.<sup>4</sup>N.W.<sup>4</sup>  
40.0 Ac. ±

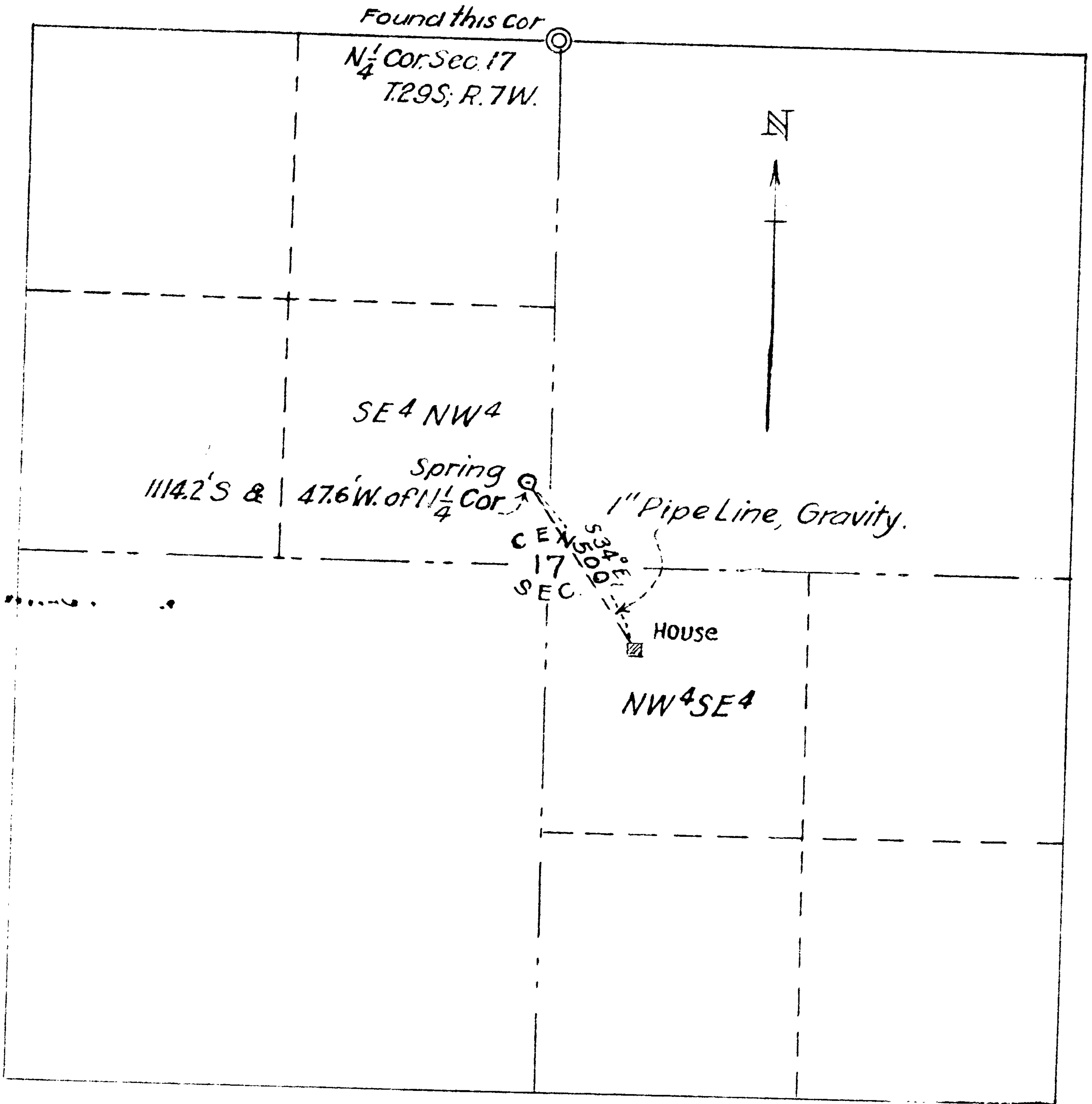
25.1 Acres ±

Total Acreage = 67.2 ±



COUNTY SURVEYOR'S OFFICE. ROSEBURG, ORE.  
 GEO. GROUCHER TO CHAS. MEISTERFIELD  
 PROPERTY TRANSFER.  
 IN SEC. 17, T.29S; R.7W; W.M.; DOUGLAS COUNTY, ORE.  
 Scale, 1" = 200 ft. Sept. 1937  
 By Arthur Boyer Dep. Co. Surveyor.  
 MAP FILE M4 / 20 F

C. S. File No. 30/34



APPLICATION FOR PERMIT  
 COUNTY SURVEYOR'S OFFICE, ROSEBURG, ORE.  
 DATA TO ACCOMPANY APPLICATION FOR WATER RIGHT  
 OF CHARLES MEISTERFELT OUT OF SPRING IN THE  
 SE<sup>4</sup>NW<sup>4</sup> Sec.17, T29S; R.7W; W.M. FOR DOMESTIC PURPOSES FOR USE  
 IN THE NW<sup>4</sup>SE<sup>4</sup> said Sec 17

Scale, 1" = 400 ft.

Survey & Map by Arthur Boyer,

Dep. Co. Surveyor: Reg. Engr. Ore Lic. 1581

Sept. 1937.

C. S. File No. 3034