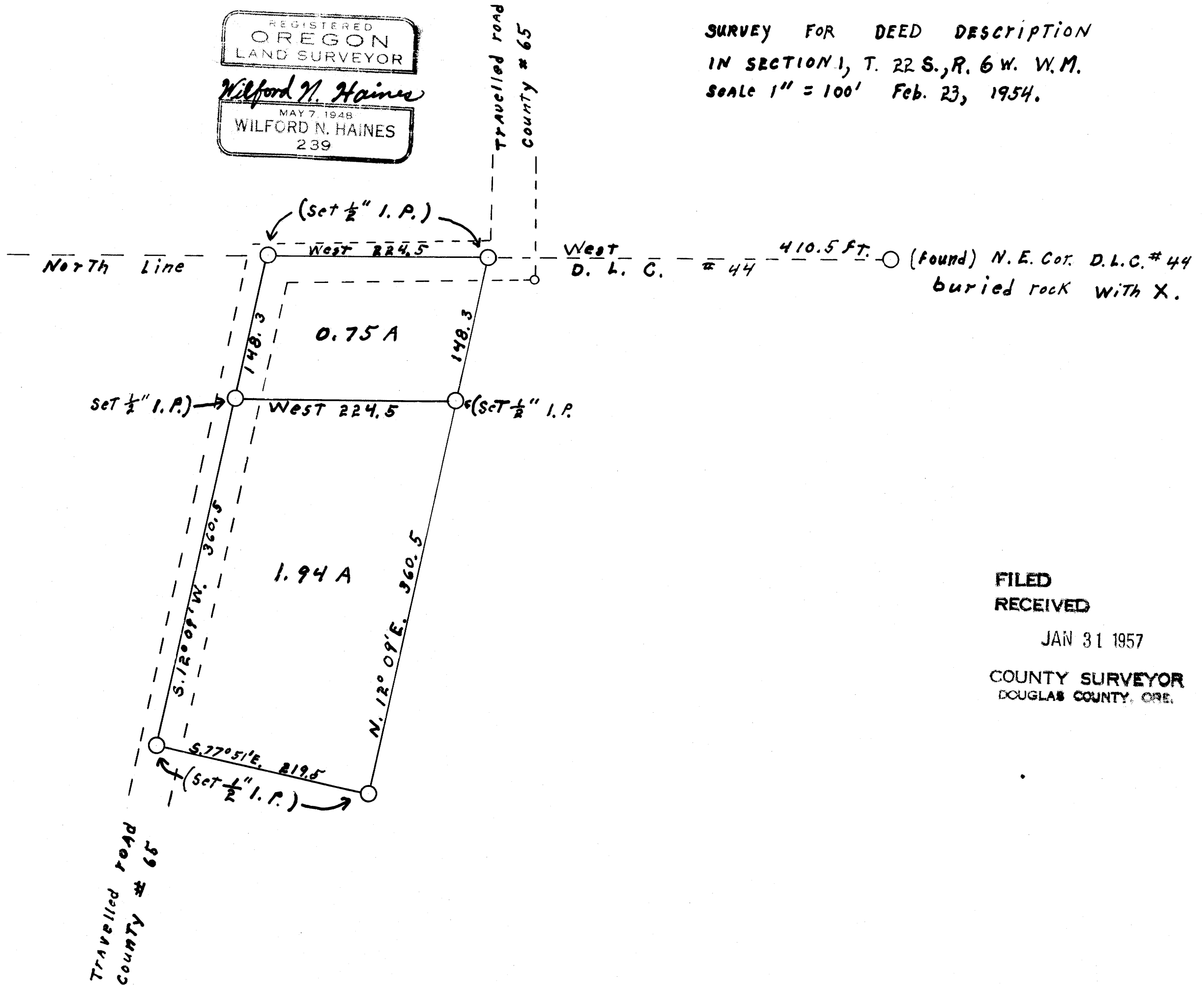


REGISTERED  
**OREGON**  
 LAND SURVEYOR  
*Wilford N. Haines*  
 MAY 7, 1948  
 WILFORD N. HAINES  
 239

SURVEY FOR DEED DESCRIPTION  
 IN SECTION 1, T. 22 S., R. 6 W. W.M.  
 SCALE 1" = 100' Feb. 23, 1954.



FILED  
 RECEIVED  
 JAN 31 1957  
 COUNTY SURVEYOR  
 DOUGLAS COUNTY, ORE.

COUNTY SURVEYORS FILE  
 DO NOT REMOVE FROM