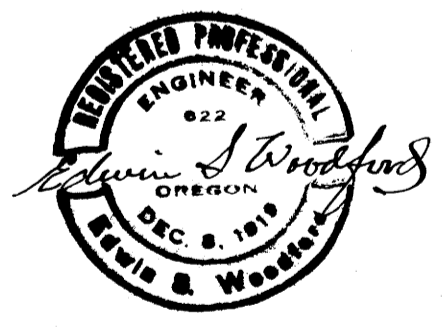
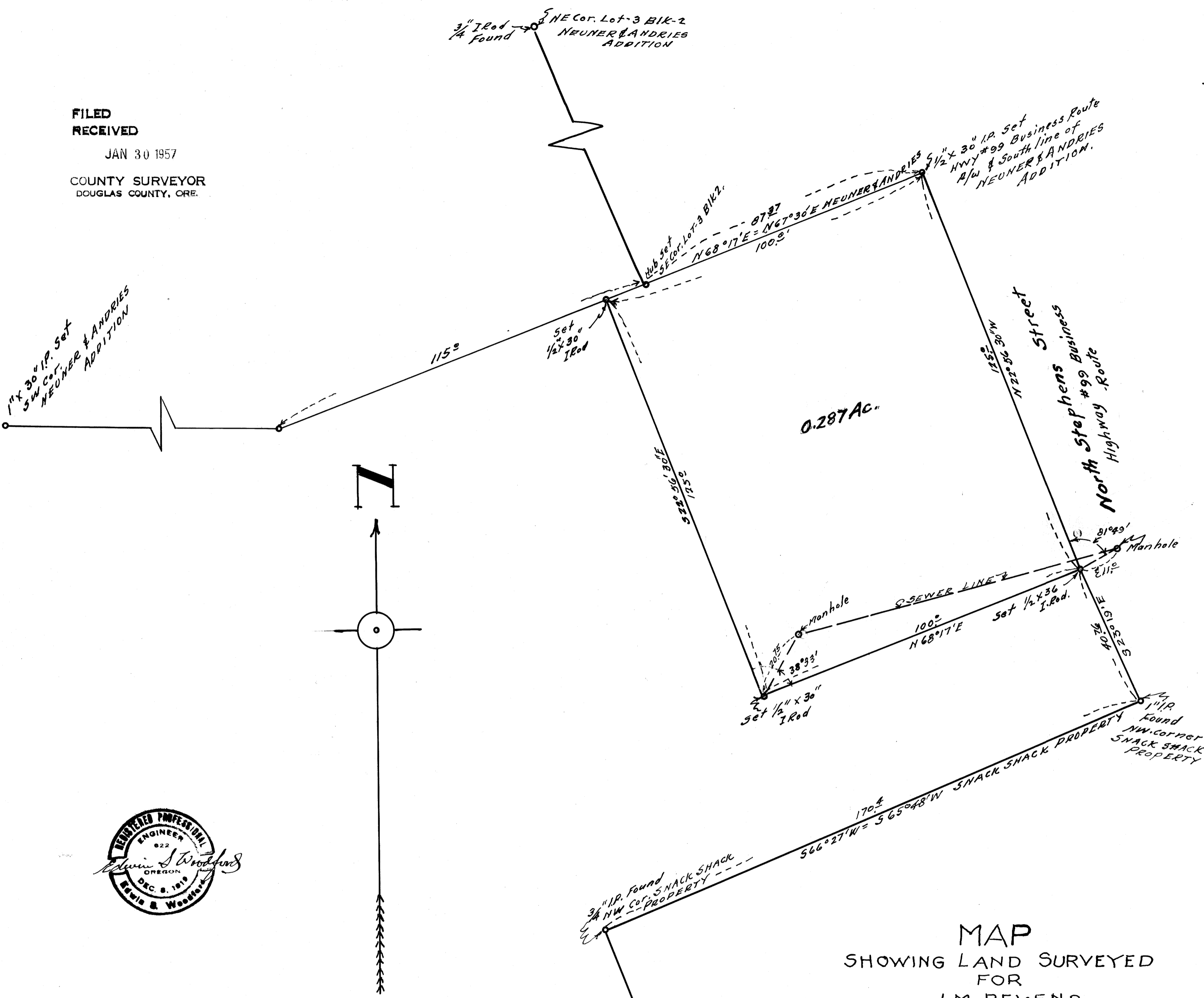


FILED
RECEIVED

JAN 30 1957

COUNTY SURVEYOR
DOUGLAS COUNTY, ORE.

C.S. File No. 42/224
MAP FILE 42/224



MAP
SHOWING LAND SURVEYED
FOR
J.M. BEVENS
IN
SEC. 13 & 18 T.P. 27S - Rg. 5 & 6W WM.
Scale - 1" = 20'. AUGUST-1956.

C.S. File No. 42/224

MAP FILE 42/224