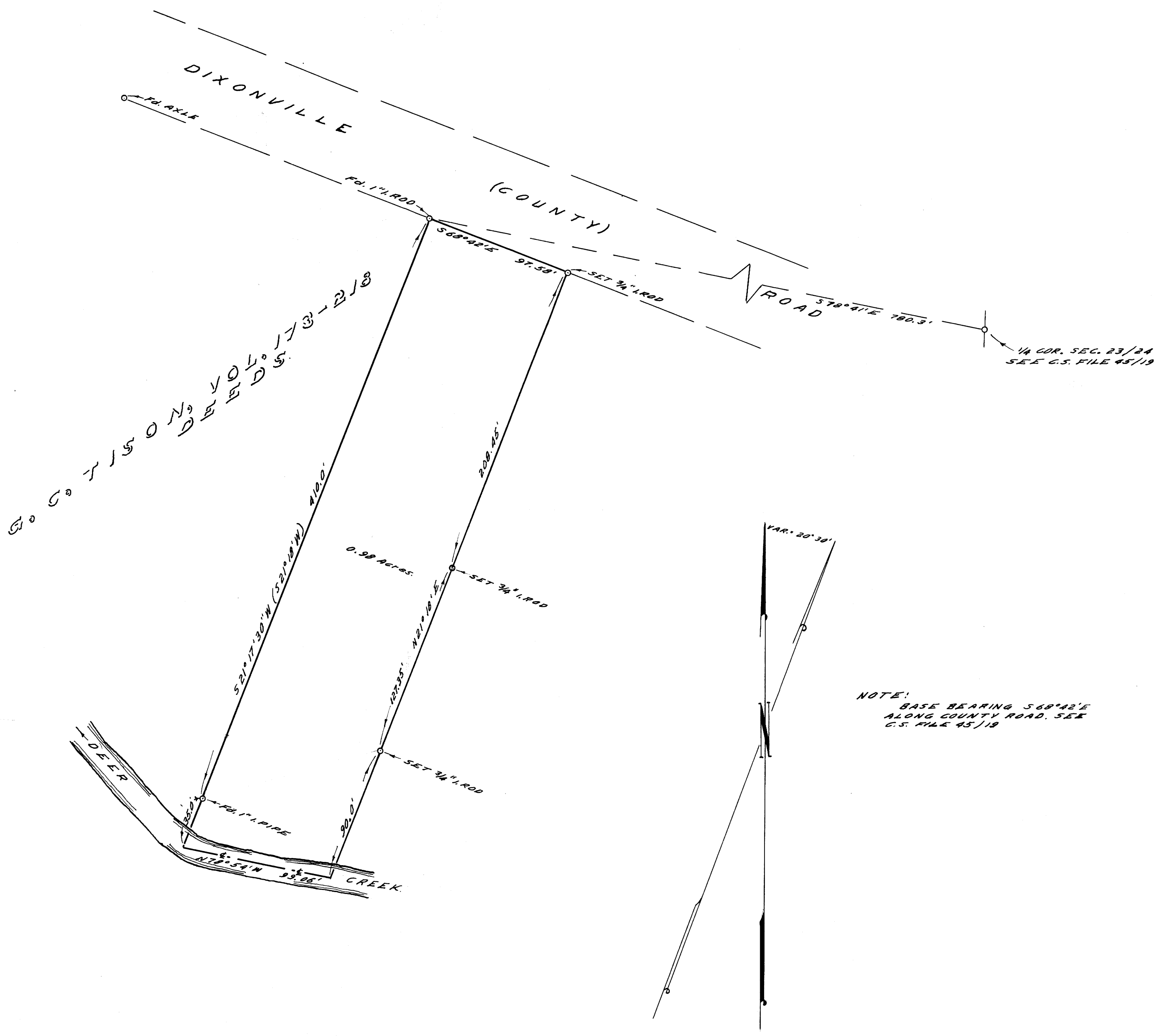


1-4 W  
25/64 2712 S 0



COUNTY SURVEYOR'S OFFICE  
DOUGLAS COUNTY, OREGON

SURVEY FOR DEED DESCRIPTION  
SECTION 23, T27S., R5W, W.M.

FRED M. DARBY COUNTY SURVEYOR  
SURVEYED JAN. 21, 1957 BY  
JAMES W. BYRON - DEPUTY SCALE 1" = 50'  
SURVEYED FOR LESTER L. BELL

*James W. Byron*

COUNTY SURVEYORS FILE  
DO NOT REMOVE FROM OFFICE