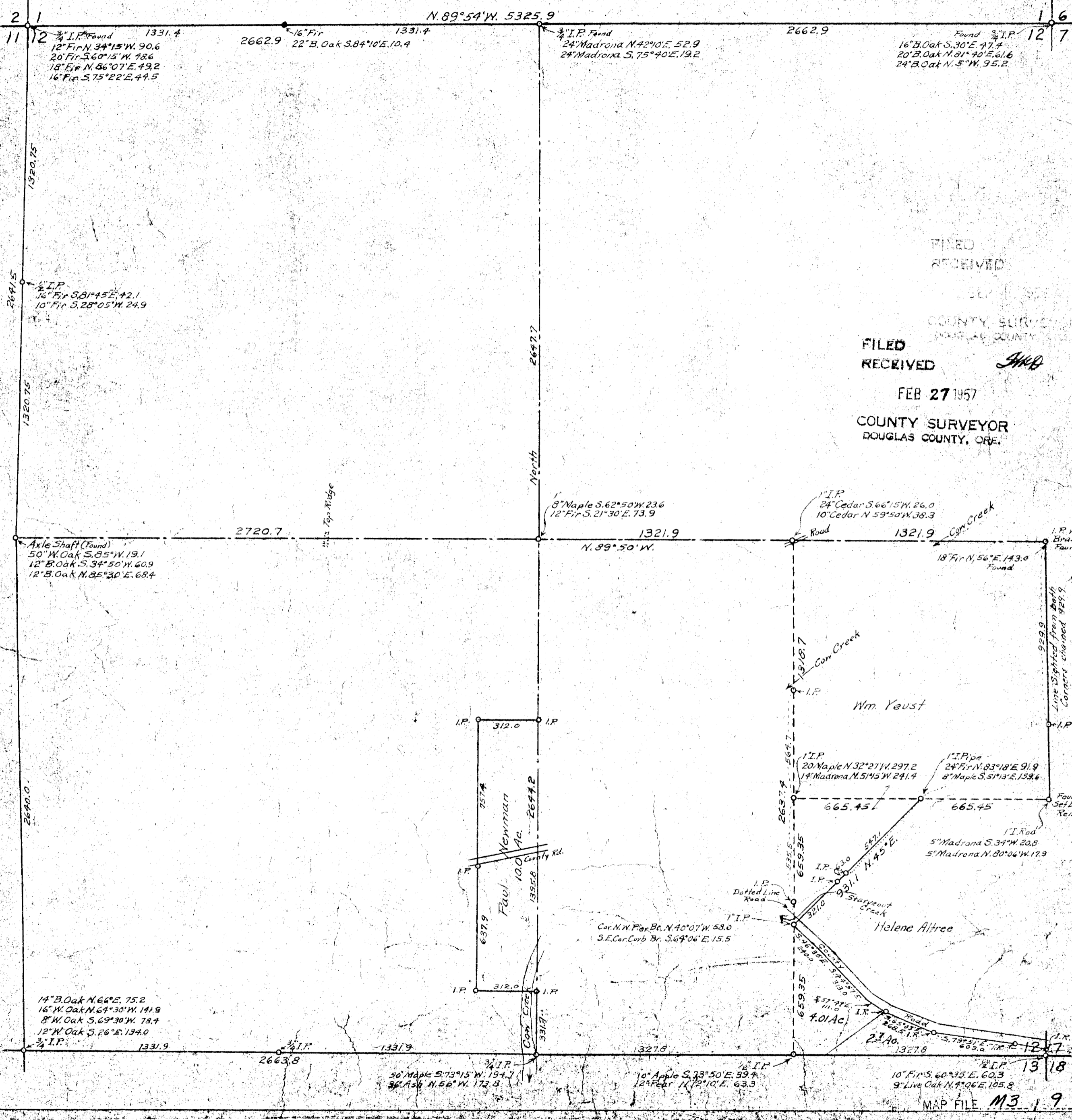
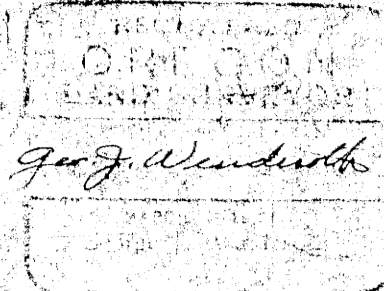


Surveys
 Paul Newman 1951
 Booth Estate 1952
 Geo. Lockington 1952
 C.E. Morris 1954
 Helene Altree 1956
 Wm. Yaust 1957

COUNTY SURVEYOR'S OFFICE
 DOUGLAS COUNTY, OREGON.
 SURVEYS IN
 SECTION 12, T.32S., R.5W., W.M.
 Geo. J. Wenderoth, Deputy Scale 1" = 400'



FILED
 RECEIVED
 COUNTY SURVEYOR
 DOUGLAS COUNTY, ORE.
 FILED
 RECEIVED
 FEB 27 1957
 COUNTY SURVEYOR
 DOUGLAS COUNTY, ORE.

MAP FILE M3-19