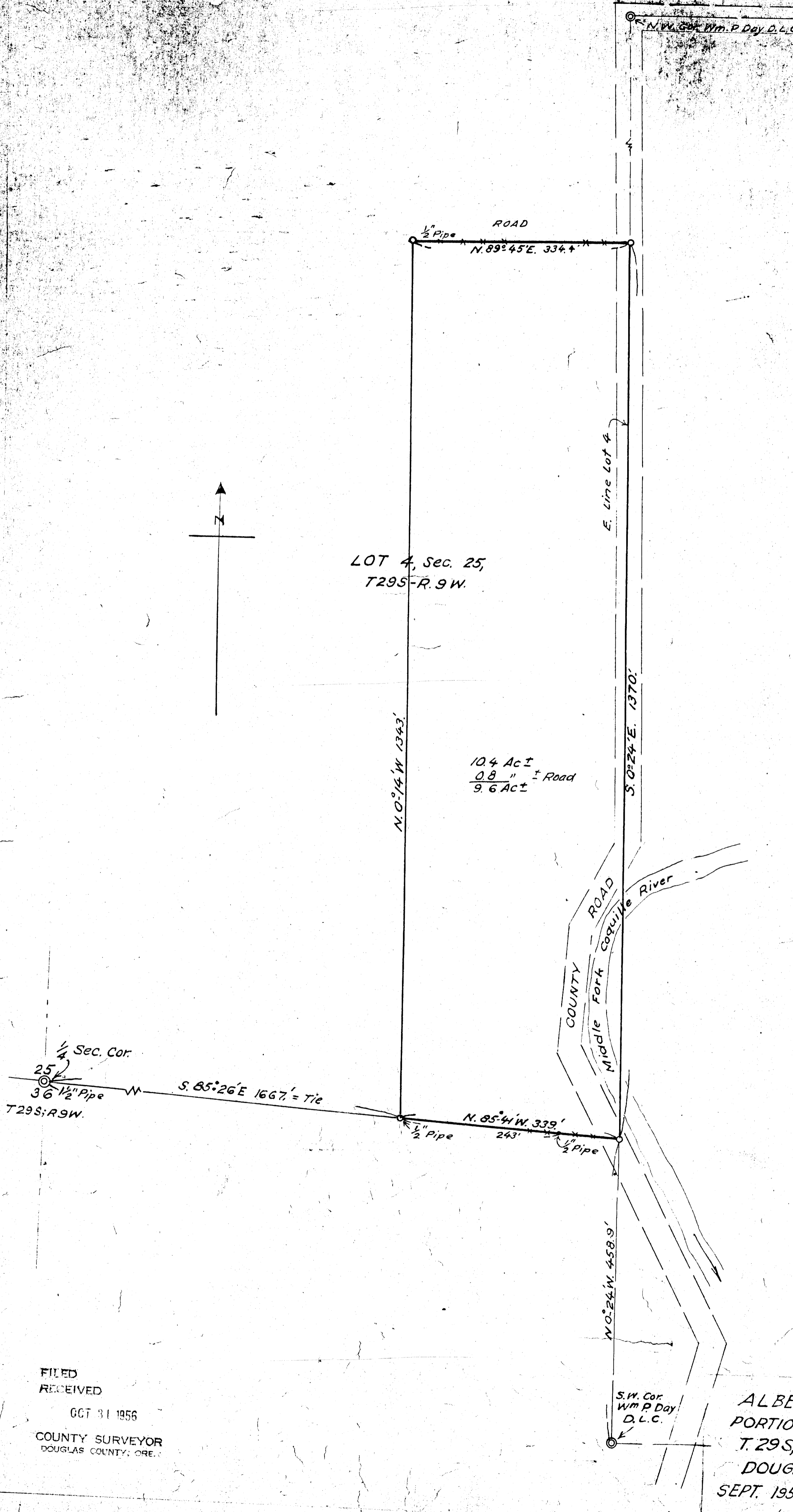


E4-E



LOT 4, Sec. 25,
T29S-R.9W.

10.4 Ac ±
0.8 " ± Road
9.6 Ac ±

1/4 Sec. Cor.
25'
36 1/2" Pipe
T29S; R.9W.
S. 85° 26' E. 1667' = Tie

N. 85° 41' W. 339'
243'
1/2" Pipe

N.W. Cor. Wm. P. Day D.L.C.

E. Line Lot 4

S. 0° 24' E. 1370'

COUNTY ROAD
Middle Fork Coquille River

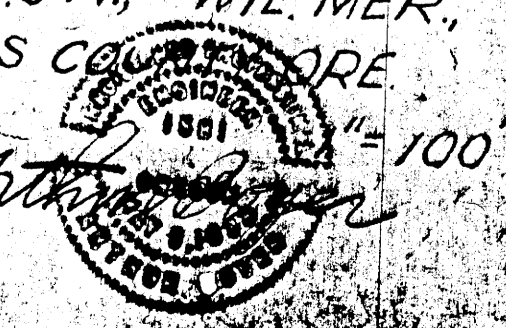
N. 0° 24' W. 458.9'

S.W. Cor.
Wm P. Day
D.L.C.

THIS COPY MADE FROM
A XEROX 2510
DATE 2-7-89

COUNTY SURVEYORS FILE DATA
DO NOT REMOVE FROM OFFICE

ALBERT WAFER EST.
PORTION OF LOT 4, SEC. 25,
T. 29S; R. 9W., WIL. MER.,
DOUGLAS COUNTY, ORE.
SEPT. 1956



MAP FILE: 113 173

FILED
RECEIVED
OCT 31 1956
COUNTY SURVEYOR
DOUGLAS COUNTY, ORE.