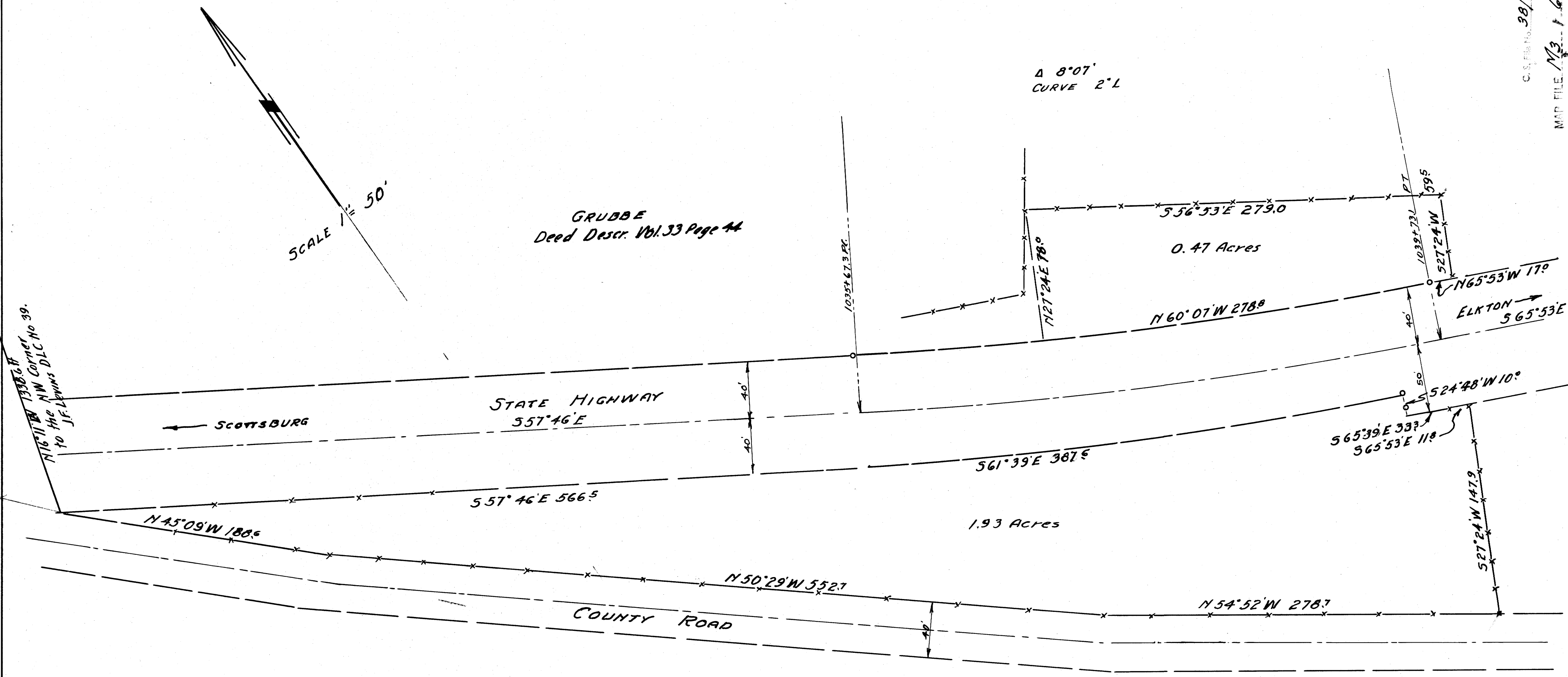


SCALE 1" = 50'

GRUBBE
Deed Descr. Vol. 33 Page 44

Δ 8°07'
CURVE 2° L

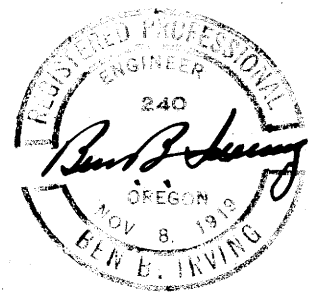
N 16° 11' W 1336.64
to the NW Corner
J.F. Lewis DLC No. 39.



COUNTY SURVEYOR'S OFFICE
DOUGLAS COUNTY OREGON

J.I. SMITH TO G.E. LA VOY
SECTION 19 T22S, R7W, WM.

BEN. B. IRVING COUNTY SURVEYOR
SURVEYED Nov. 14, 1945



NOTE:
All bearings computed from those shown
on STATE HIGHWAY map for the centerline of
the highway.

COUNTY SURVEYORS FILE DATA
DO NOT REMOVE FROM OFFICE