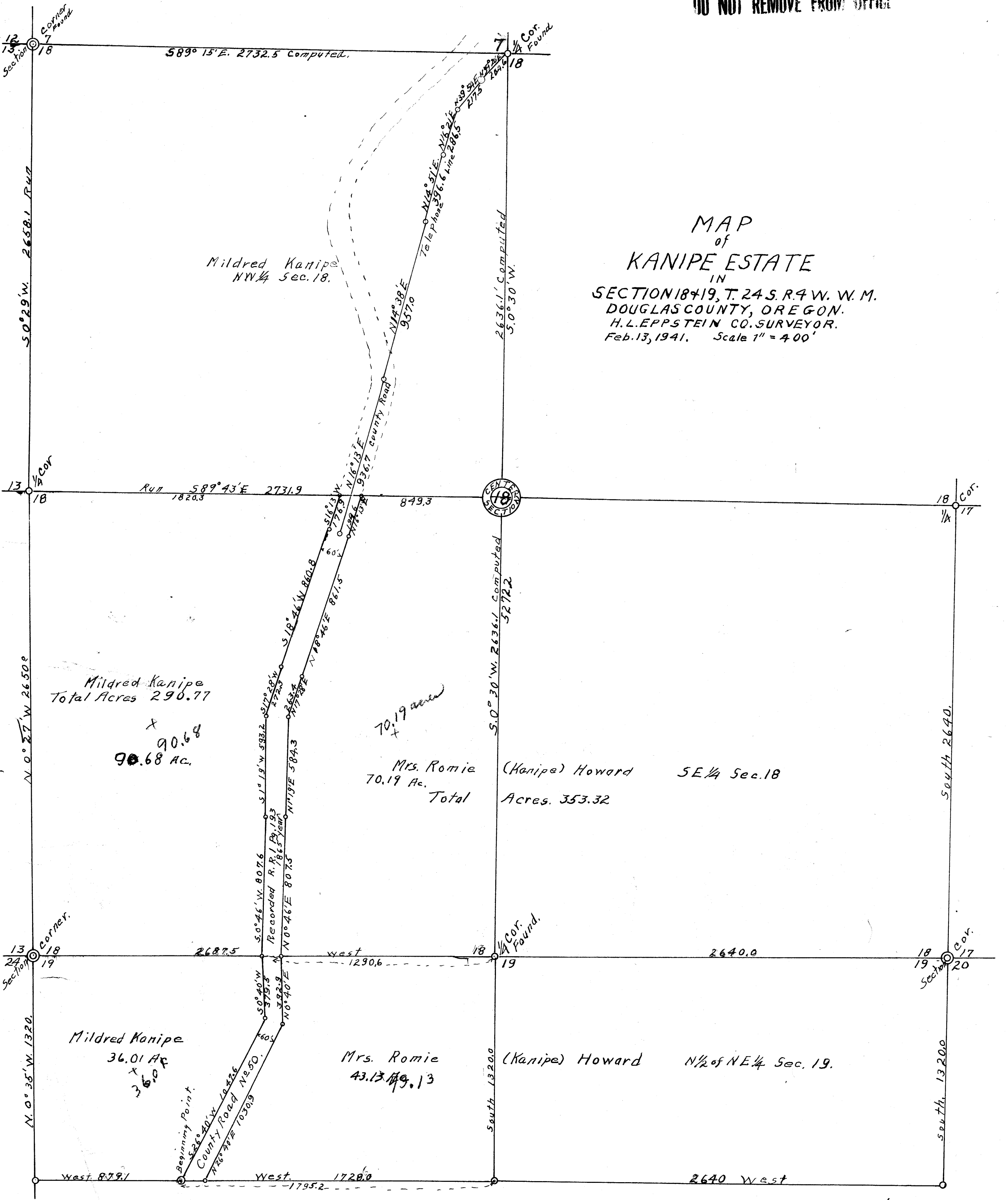


COUNTY SURVEYORS FILE DATA  
DO NOT REMOVE FROM OFFICE

MAP  
of  
KANJIPE ESTATE

IN  
SECTION 18+19, T. 24 S. R. 4 W. W. M.  
DOUGLAS COUNTY, OREGON.  
H. L. EPPSTEIN CO. SURVEYOR.  
Feb. 13, 1941. Scale 1" = 400'



Mildred Kanipe  
NW 1/4 Sec. 18.

Mildred Kanipe  
Total Acres 290.77  
90.68 Ac.

70.19 acres

Mrs. Romie (Kanipe) Howard  
70.19 Ac.  
Total Acres 353.32  
SE 1/4 Sec. 18

Mildred Kanipe  
36.01 Ac  
36.01 Ac

Mrs. Romie (Kanipe) Howard  
43.13 Ac  
N 1/2 of NE 1/4 Sec. 19.

C. S. File No. 34/46A

MAP FILE M3-153