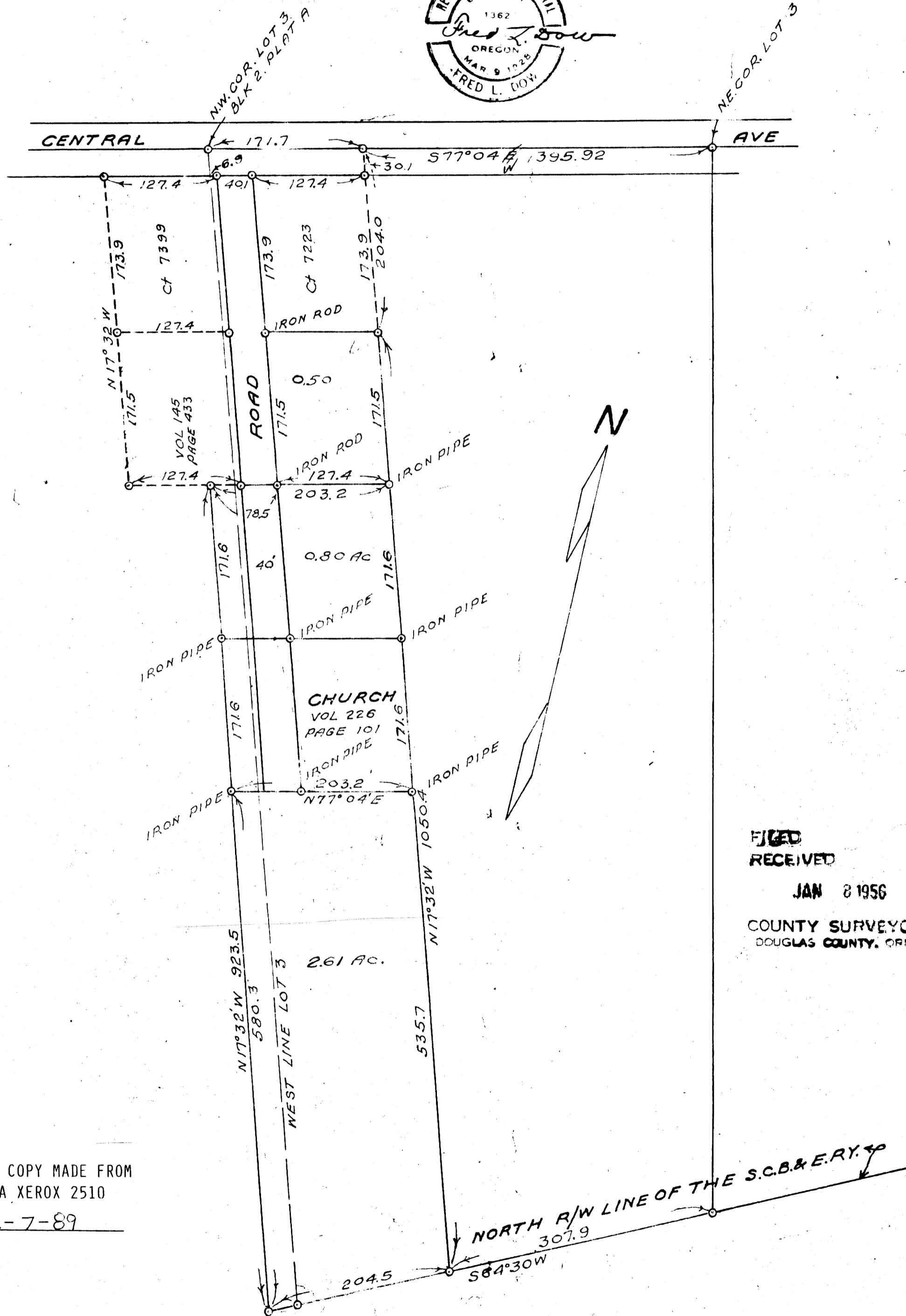


COUNTY SURVEYORS FILE DATA  
DO NOT REMOVE FROM OFFICE

LOUIE T. BAKER  
PART OF LOTS 2 & 3  
BLOCK 2, PLAT A  
S.L. & W. Co.

DECEMBER 1956 1" = 100'



FILED  
RECEIVED  
JAN 8 1956  
COUNTY SURVEYOR  
DOUGLAS COUNTY, ORE.

THIS COPY MADE FROM  
A XEROX 2510  
DATE 2-7-89

MAP FILE M3 152

Sec 16, T25S, R5W