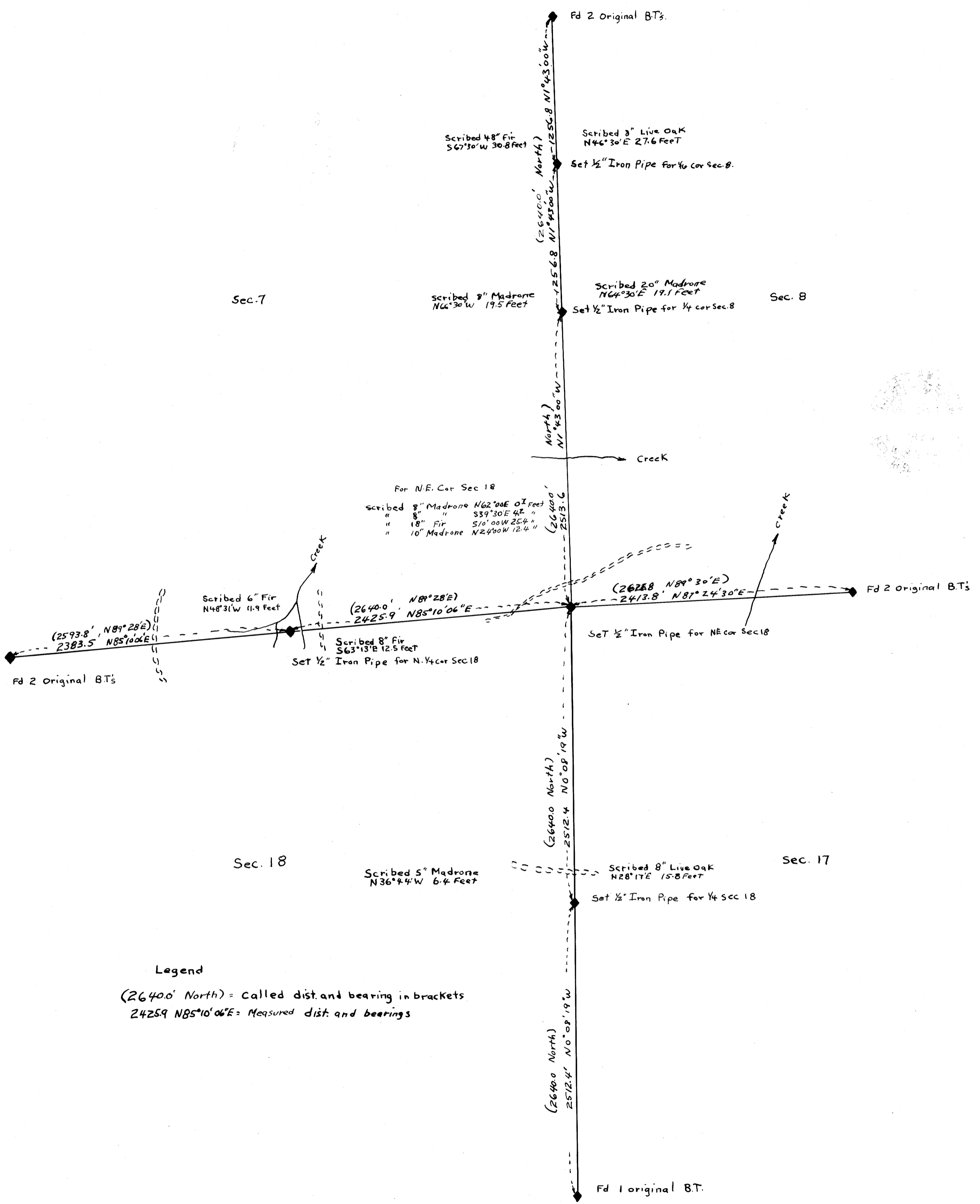


ORIGINAL SURVEYS TILL  
 BY THE BUREAU FROM U.S.

Sections 18 and 8, Twp. 32 S., R. 8 W. W.M.,  
 Douglas County Oregon  
 Scale 1" = 600' June 28, 1956



Legend  
 (26400' North) = Called dist. and bearing in brackets  
 2425.9 N 85° 10' 06" E = Measured dist. and bearings

