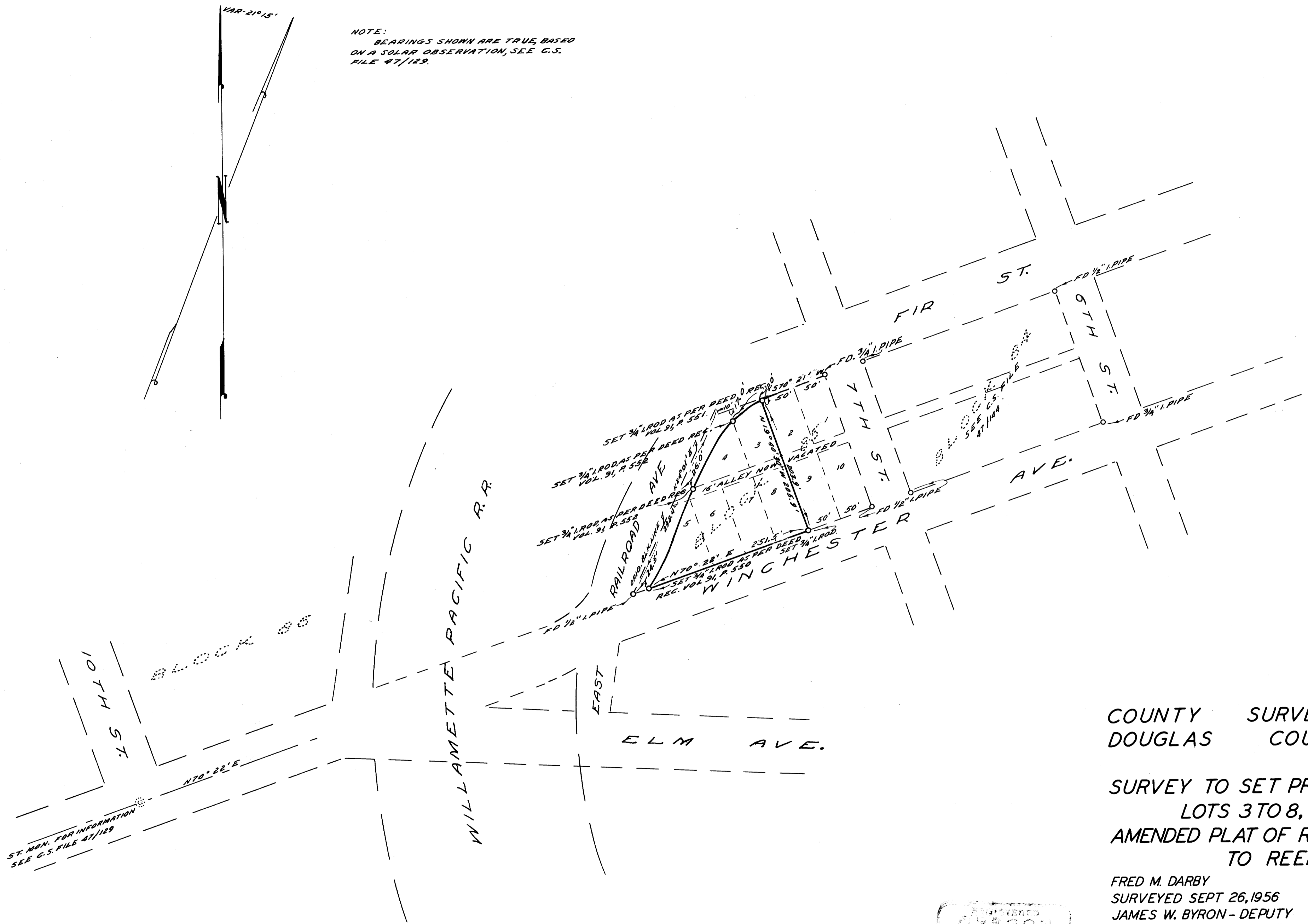


NOTE: BEARINGS SHOWN ARE TRUE, BASED ON A SOLAR OBSERVATION, SEE C.S. FILE 47/129.



ST. MON. FOR INFORMATION SEE C.S. FILE 47/129

COUNTY SURVEYOR'S OFFICE DOUGLAS COUNTY, OREGON

SURVEY TO SET PROPERTY CORNERS LOTS 3 TO 8, INC. BLOCK 85 AMENDED PLAT OF RAILROAD ADDITION TO REEDSPORT

FRED M. DARBY COUNTY SURVEYOR SURVEYED SEPT 26, 1956 BY JAMES W. BYRON - DEPUTY SCALE 1" = 100' SURVEYED FOR BANGS & DICK LOGGING CO.

James W. Byron (Signature)

COUNTY SURVEYORS FILE DATA DO NOT REMOVE FROM OFFICE