

COUNTY SURVEYOR'S OFFICE  
DOUGLAS COUNTY, OREGON

COUNTY SURVEYORS FILE DATA  
DO NOT REMOVE FROM OFFICE

SURVEY FOR DEED DESCRIPTION  
SECTION 20, T27S., R5W., W.M.

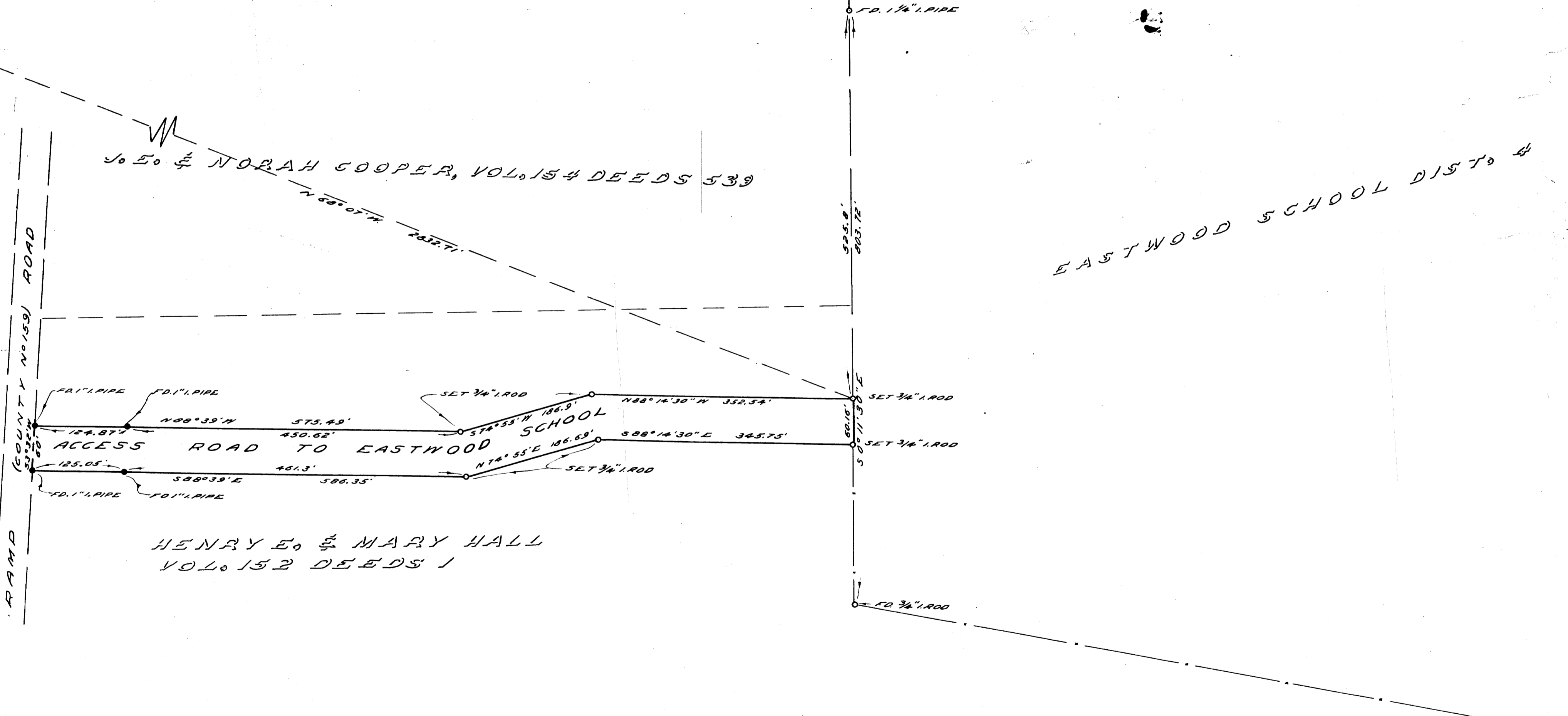
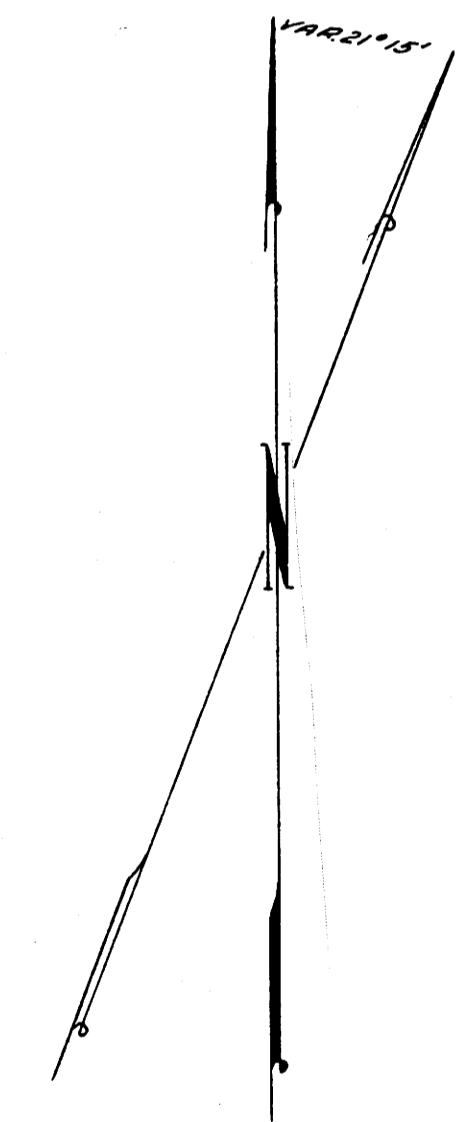
FRED M. DARBY COUNTY SURVEYOR  
SURVEYED NOV. 8, 1956 BY  
JAMES W. BYRON - DEPUTY SCALE 1" = 100'  
SURVEYED FOR SCHOOL DIST. No 4

REGISTERED  
OREGON  
LAND SURVEYOR

*James W. Byron*

N.W. COR.  
D.L.C. No 40

NOTE: BASE BEARING 50° 11' 30" E  
ALONG WEST LINE SCHOOL PROPERTY  
C.S. FILE 47/104



To E of & NORAH COOPER, VOL. 154 DEEDS 539

EASTWOOD SCHOOL DIST

ACCESS ROAD TO EASTWOOD SCHOOL

HENRY E. & MARY HALL  
VOL. 152 DEEDS 1

• = 1" IRON PIPE FROM AN  
UNRECORDED SURVEY

THIS COPY MADE FROM  
A XEROX 2510  
DATE 1-30-89

C.S. 47/104  
M 3-47

M3-47