

94° 15' EW

SURVEYED FOR
ED BENSON

PARCELS IN LOTS 35-36-37-38 & 39

PLAT "D"

ROSEBURG HOME ORCHARD TRACTS
DOUGLAS COUNTY
OREGON

DRAWN BY
JAMES R. DAUGHERTY
CIVIL-SANITARY ENGINEER
ROSEBURG ORE.



SCALE 1"=100'

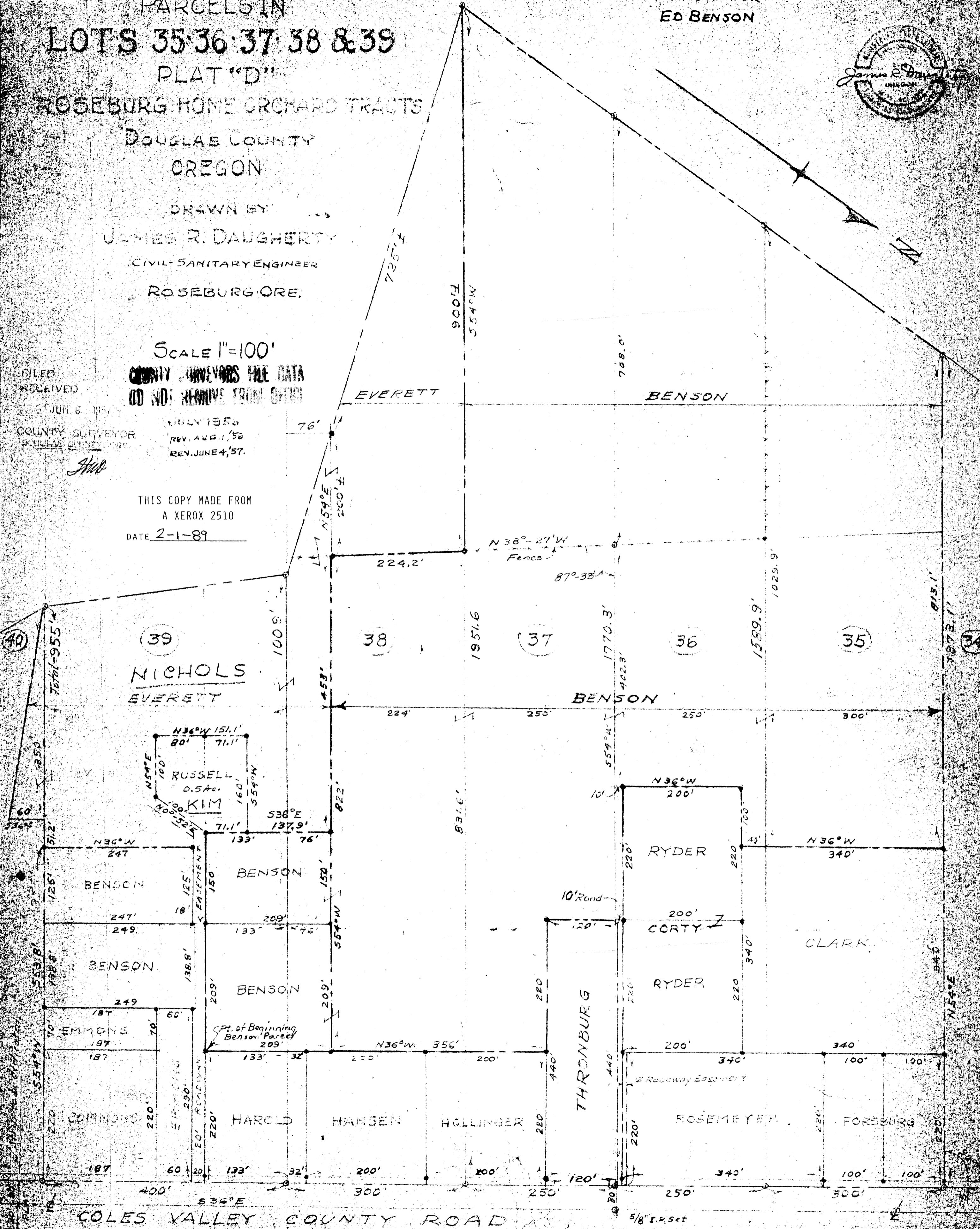
COUNTY SURVEYORS FILE DATA
DO NOT REMOVE FROM OFFICE

FILED
RECEIVED

JUN 6 1957
COUNTY SURVEYOR
DOUGLAS COUNTY ORE.

JULY 1956
REV. APR. 1, '56
REV. JUNE 4, '57.

THIS COPY MADE FROM
A XEROX 2510
DATE 2-1-89



NICHOLS
EVERETT

RUSSELL
KIM
0.540

RYDER

CORTY

RYDER

ROSEMEYER

FORESBURG

COLES VALLEY COUNTY ROAD

All Parcel Lines are parallel with
original Lot Lines and have been
adjusted to meet the same.