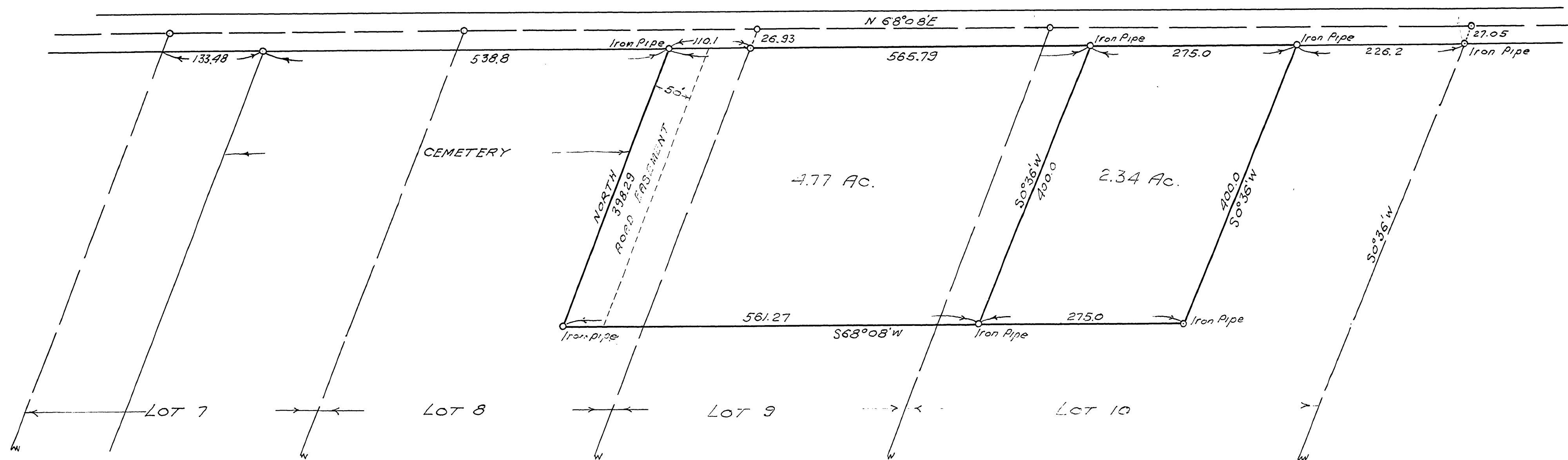


MAP FILE M 3 - 42



M. & B. Descriptions are reported to be
 210' ± West of where they should be.
 Bill Paulin - Road Dept - reported same on
 Aug. 16, 1958

J. L. Flint

CS. M3/42

J.L. FLINT
 PART OF LOTS 7, 8, 9 & 10
 BLOCK I, PLAT "I"
 S.L. & W. Co.
 AUGUST 1955 1" = 100'



COUNTY SURVEYORS FILE DATA
 DO NOT REMOVE FROM OFFICE

FILED
 RECEIVED
 NOV 14 1958
 COUNTY SURVEYOR
 JOE ASHLEY

MAP FILE M3 7 42