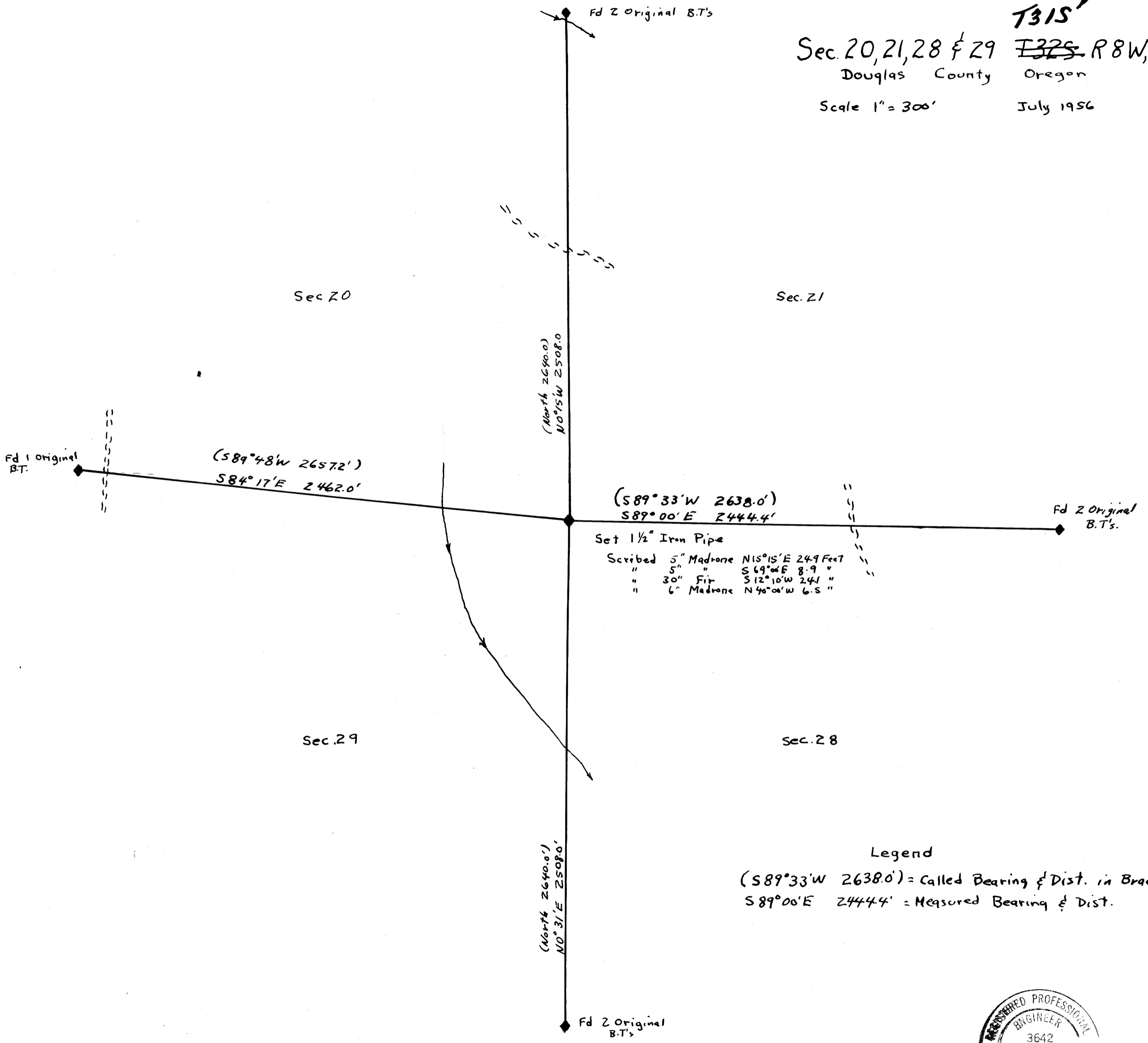


DO NOT REMOVE FROM OFFICE

T31S
AND

Sec. 20, 21, 28 & 29 T31S R8W, W.M.
Douglas County Oregon

Scale 1" = 300' July 1956



Legend

(S89°33'W 2638.0') = Called Bearing & Dist. in Brackets
S89°00'E 2444.4' = Measured Bearing & Dist.



C.S. File No. 42/168
MAP FILE 113 14