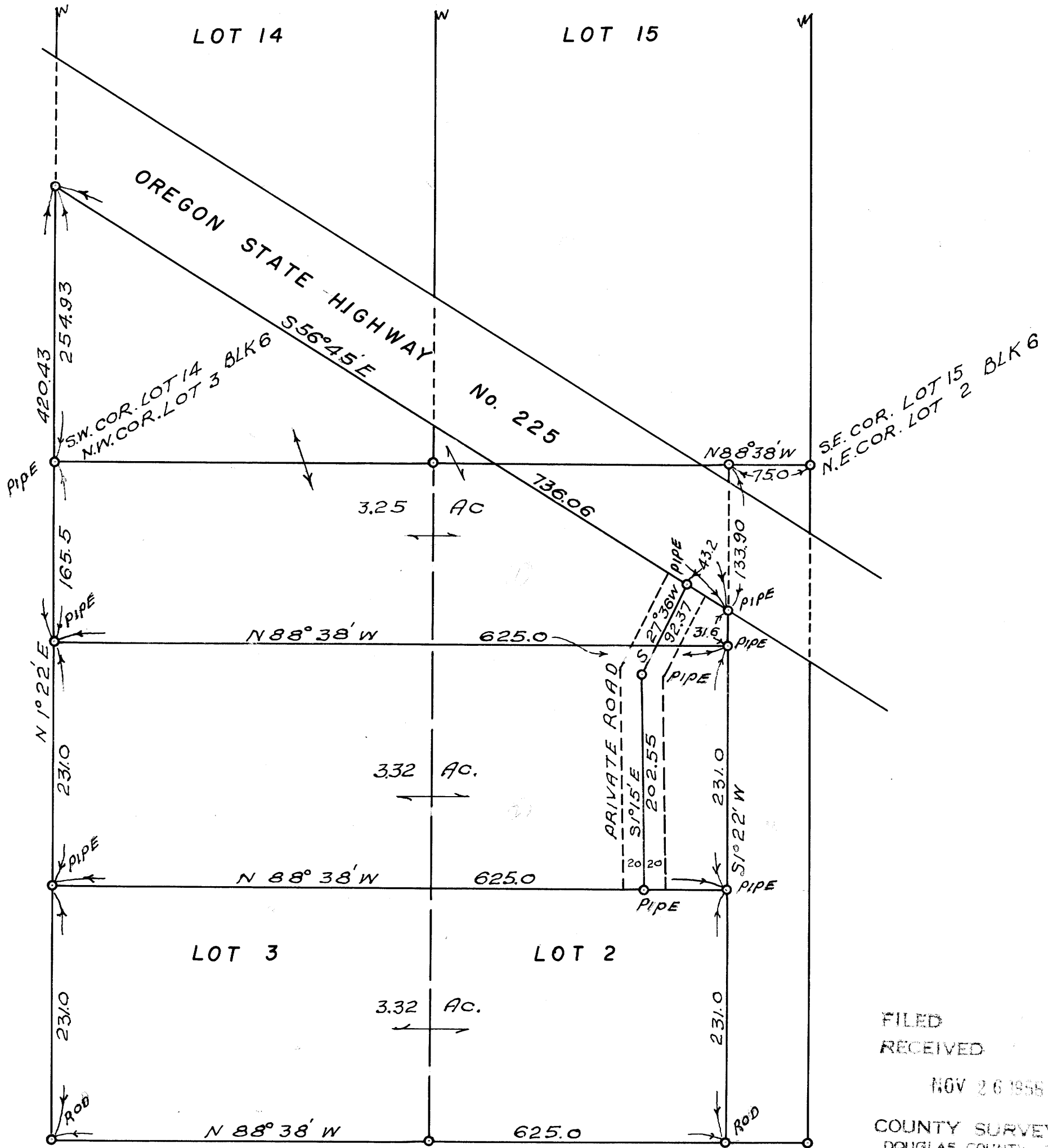


COUNTY SURVEYORS FILE DATA
DO NOT REMOVE FROM OFFICE

KENNETH P. SLAWSON
PART OF LOTS 2, 3, 14 AND 15
BLOCK 6 PLAT M
S.L. & W. Co
MARCH 1956 1" = 100'



FILED
RECEIVED
NOV 26 1956
COUNTY SURVEYOR
DOUGLAS COUNTY, ORE.

MAP FILE M3 138
CS 50/132

secs. 13 + 24, T25S, R6W.