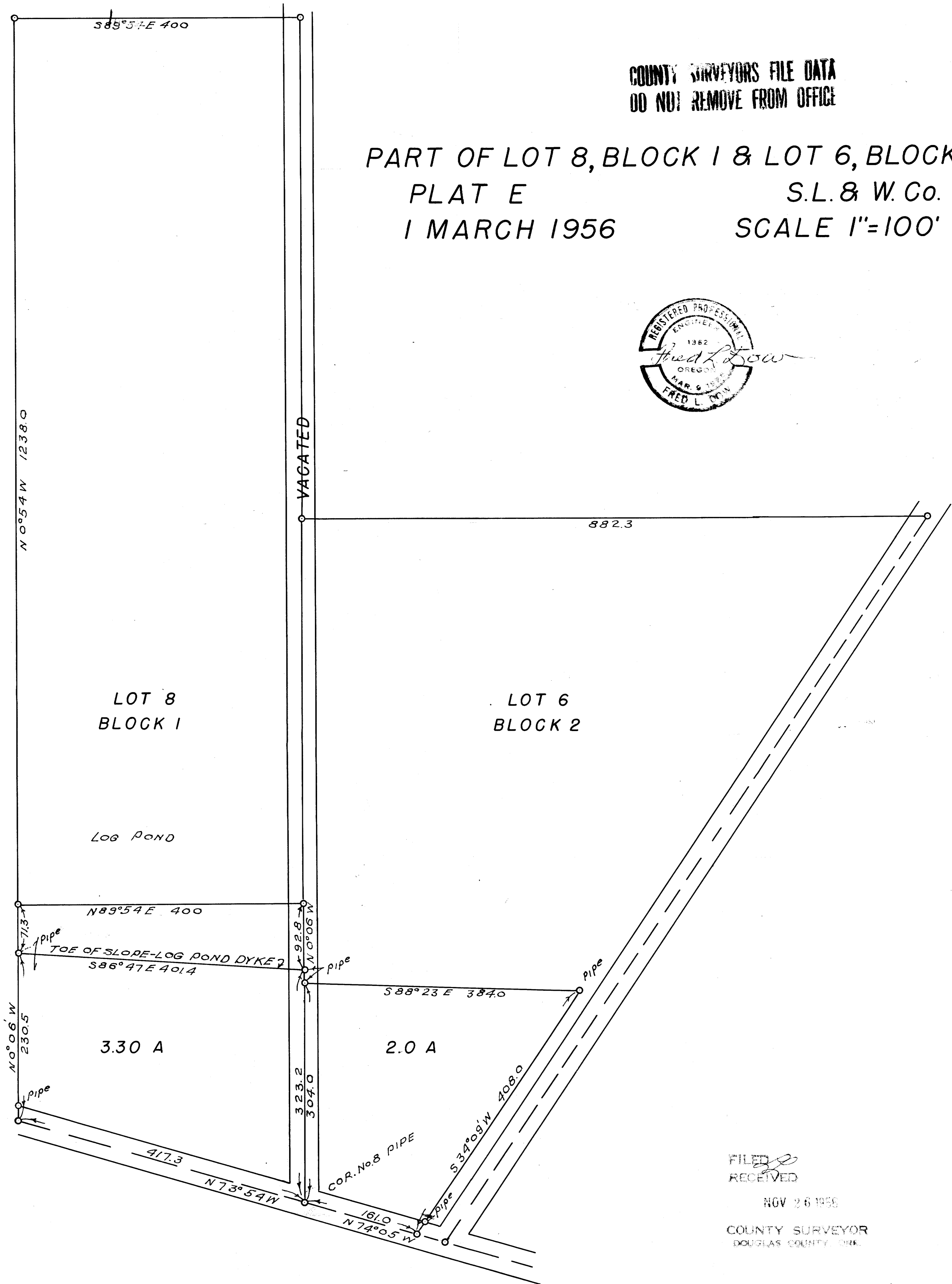


COUNTY SURVEYORS FILE DATA
DO NOT REMOVE FROM OFFICE

PART OF LOT 8, BLOCK 1 & LOT 6, BLOCK 2
PLAT E
1 MARCH 1956
S.L. & W. Co.
SCALE 1"=100'



FILED
RECEIVED
NOV 26 1955
COUNTY SURVEYOR
DOUGLAS COUNTY, ORE.

C.S. 50/48

MAP FILE M3 137

52.5.1972, T 25 S. R. 50.