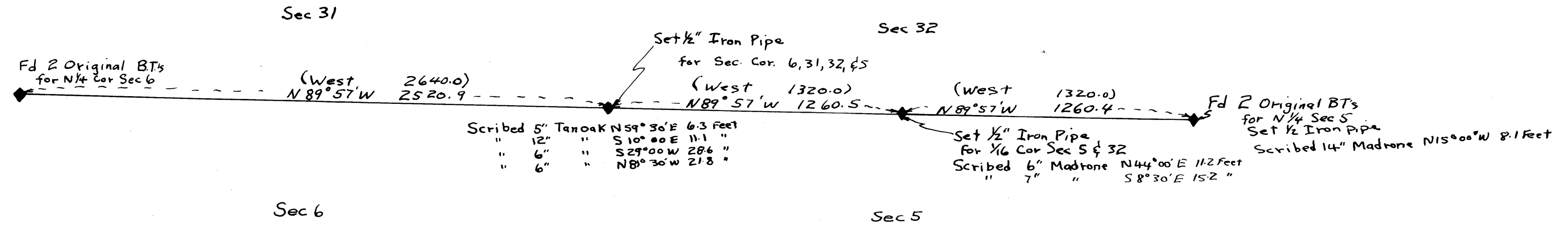
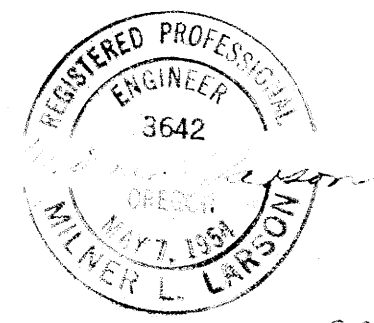


COUNTY SURVEYORS FEE LIST  
DO NOT REMOVE FROM OFFICE

Section 6 and 5, Twp 32 S, R 8 W., W.M.  
Douglas County Oregon.  
Scale 1" = 400' July 1956



Legend  
(West 1320.0') = Call bearing & distance  
N 89° 57' W 1260.5 = Measured bearing & distance



C.S. File No. 42/167  
MAP FILE M3 13