

Found NW B.T.
 12" Fir, S56°E, 34.2
 20" Fir, S65°W, 40.8
 40" Fir, N58°E, 37.6

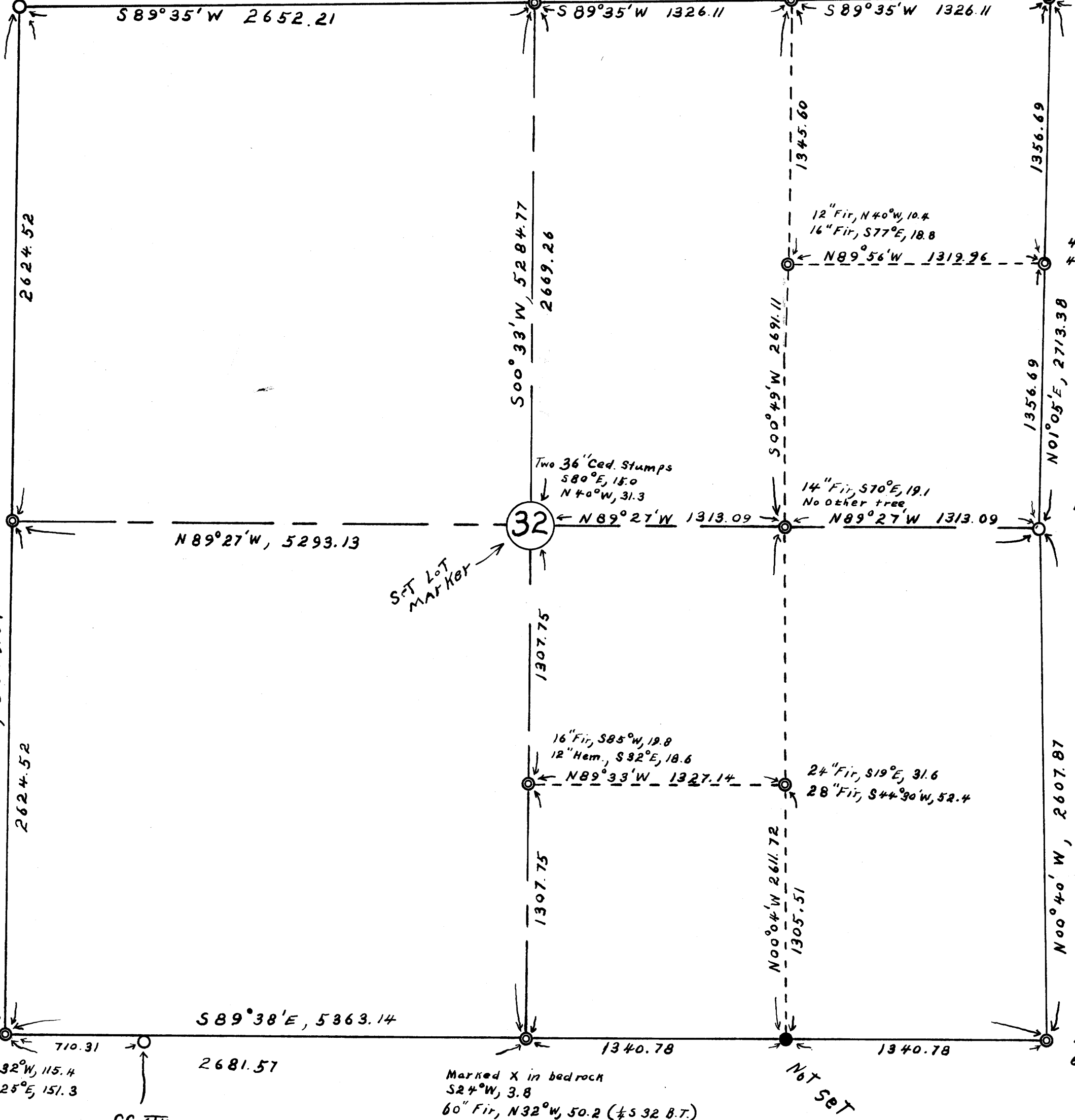
60" Fir, N36°E, 55.3
 40" Ced., S85°E, 22.6

16" Fir, N48°10'E, 14.0
 12" Fir, S57°30'E, 11.5

Found Brass Cap
 And All B.T.'s For 29/21
 29/28

30" Fir, North, 6.9
 30" Fir, S10°E, 24.0

Found iron pin
 30" Fir Sna3, S76°E, 13.9 (original)
 Scribed 8" Fir, South, 17.6



REGISTERED
 OREGON
 LAND SURVEYOR
 Wilford N. Haines
 MAY 7 1948
 WILFORD N. HAINES
 239

T. 20S., R. 6 W., WM.
 Scale 1" = 500' 1956

- FOR WOOLEY LOGGING
- Found orig. B.T.s. Set Lot Markers
 - Set Lot Markers by proportionate measurement or by intersection

FILED
 RECEIVED
 OCT 18 1956
 COUNTY SURVEYOR
 DOUGLAS COUNTY, ORE.

T 20S R 6W

Vine Maple, N48°E, 15.8 (original)
 44" Fir, N57°W, 91.9
 X in rock cliff, S48°W, 95.7
 60" Fir, N41°30'E, 20.7 (Had XXXI carved in)
 Set L rod for cor.

60" Fir, N45°W, 87.6
 54" Fir, N59°W, 101.5

6" Fir, N36°W, 16.0
 4" Fir, N16°E, 13.3
 6" Fir, S55°W, 9.4

16" Fir, N56°E, 45.2
 16" Fir, N04°E, 25.2

Found Brass Cap
 And All B.T.'s
 N88°20'E, 419.60

48" Fir Stamp, N52°30'W, 22.9
 40" Fir, N79°E, 110.8
 Nailed brass cap to log
 for cor.

Township Line scale 1" = 1000'

T 21S R 6W

COUNTY SURVEYORS FILE DATA
 DO NOT REMOVE FROM OFFICE

MAP FILE M3-1-23
 H-15, H-109
 F.B. H-4, H-199

M3-23
 H-109
 F.B. H-4, H-15, H-199