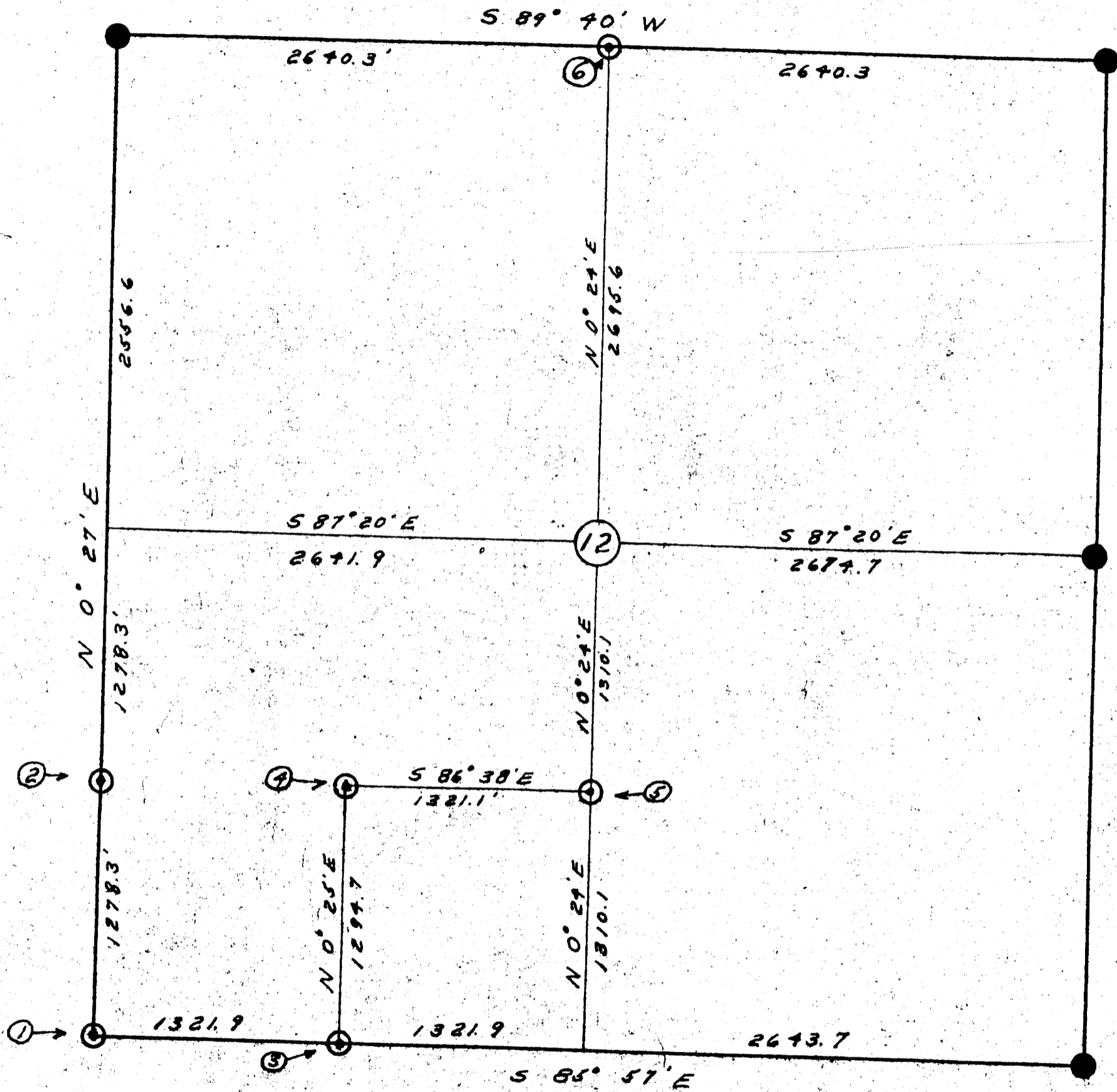


**QUALITY SURVEYORS FILE BOOK
DO NOT REMOVE FROM OFFICE**

Survey For
George Owen & D. W. Batson
Sec. 12, T21S, R11W, W.H.

By Tree Farm Management Service, Inc.
1166 7th Ave., West, Eugene, Oregon
July & August 1956



LEGEND

- Corners found
- ⊙ Corners established or reestablished - number refers to attached notes describing corner and how established

Bearings are true bearings determined by solar observation

THIS COPY MADE FROM
A XEROX 2510

DATE 1-24-89

REGISTERED
OREGON
LAND SURVEYOR

Robert G. Kintich

NOV. 3, 1953
ROBERT G. KINTICH
561

C. S. File No. 42/170

MAP FILE M3-118