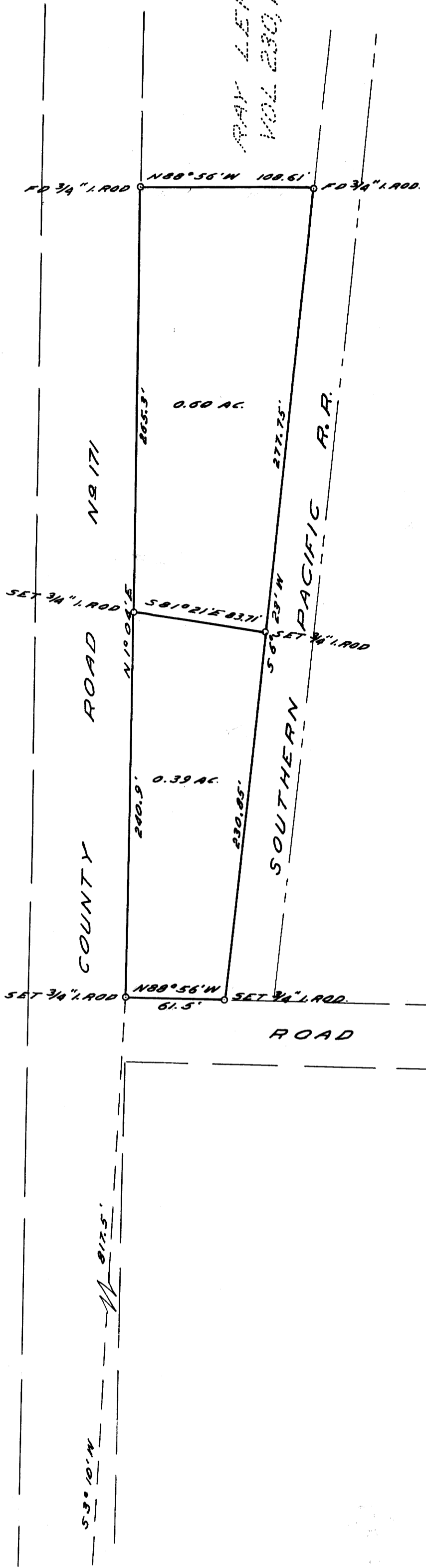


RAY LEHMAN  
VOL. 280 PAGE 211 DEED REC



NOTE:  
BASE BEARING S6°23'W ALONG WEST  
R/W LINE S.P.R.R. SEE C.S. FILE 39/51

S.W. CORNER OF W.J. MARTIN  
D.L.C. NR 62

COUNTY SURVEYOR'S OFFICE  
DOUGLAS COUNTY, OREGON

SURVEY FOR DEED DESCRIPTION IN  
LOT 7, TRACT I, PLAT I, ROSEBURG  
ORCHARD COMPANY

REGISTRY  
OREGON  
LAND DIVISION  
*James W. Byron*  
JAMES W. BYRON  
303

FRED M. DARBY COUNTY SURVEYOR  
SURVEYED MAY 16, 1956 BY  
JAMES W. BYRON - DEPUTY SCALE 1" = 60'  
SURVEYED FOR LESTER FROST

COUNTY SURVEYORS FILE DATA  
DO NOT REMOVE FROM OFFICE