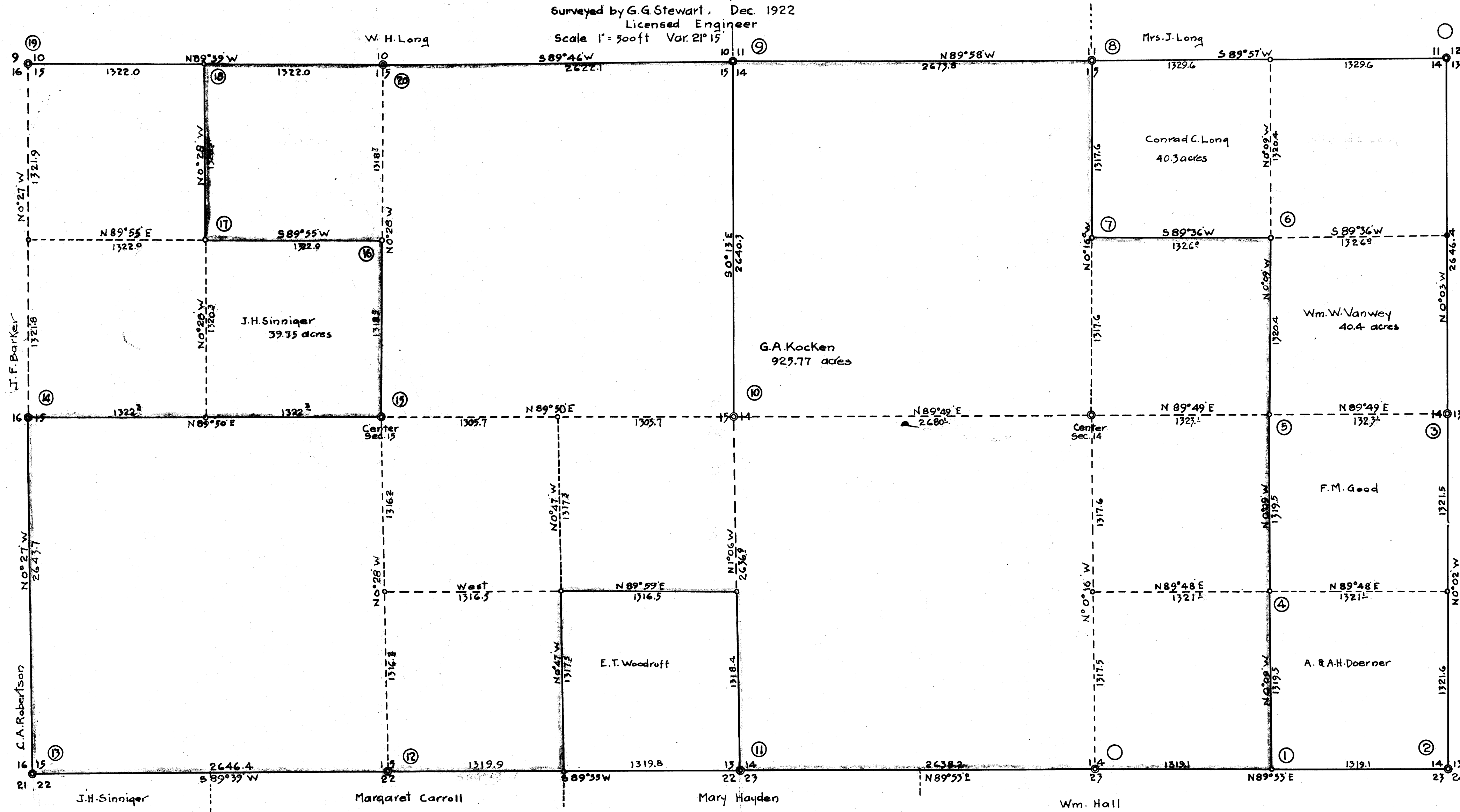


Legal Survey of Sec. 14 & 15
T. 26 S. R. 7 W.

Surveyed by G.G. Stewart, Dec. 1922
Licensed Engineer
Scale 1" = 500ft Var. 21° 15'



| Description of Corners | | | |
|------------------------|---------|----------|---|
| Cor. | Set | Witness | Trees |
| 1 | 1/16 | Stk. | 18' Fir S 36° E 23 1/2 ft. |
| 2 | Section | Pipe | 12' B.O. N 16 1/2° W 159 3/4 18' B.O. N 36° E 176 1/2 |
| 3 | 1/4 | Pipe | 18' B.O. N 61° W 45 1/2 18' W.O. N 18° E 39 1/2 |
| 4 | 1/16 | Pipe | 18' Laurel N 41° E 34 1/2 |
| 5 | 1/16 | Pipe | 8' Fir S 68° E 14 1/2 |
| 6 | 1/16 | Stk. | 12' Fir N 15° W 7 1/2 |
| 7 | 1/16 | Stk. | 18' Fir S 52° E 19 1/2 |
| 8 | 1/4 | Pipe | 18' B.O. N 61° W 119 1/2 14' Fir S 43° W 99 1/2 14' B.O. N 68° W 21 1/2 24' B.O. S 77 1/2° E 60 1/2 8' Cedar S 57 1/2° E 23 1/2 4' Laurel N 71° E 35 1/2 |
| 9 | Sec. | Pipe | 30' Fir N 70° W 24 1/2 18' Fir S 46° E 21 1/2 |
| 10 | 1/4 | Pipe | 30' Fir N 18° W 27 1/2 36' Fir S 63 1/2° W 46 1/2 30' Fir S 42 1/2° E 22 1/2 12' Fir East 31 1/2 |
| 11 | 1/4 | Pipe | 18' W. Fir S 44° W 23 1/2 10' W. Fir N 54° E 27 1/2 |
| 12 | Sec. | Pipe | 24' Hemlock N 18° E 46 1/2 20' " N 57 1/2° W 24 1/2 36' Fir S 50° W 48 1/2 |
| 13 | 1/4 | new Stk. | 14' Fir N 46° E 17 1/2 14' " S 27° E 36 1/2 |
| 14 | 1/4 | Stk. | 18' Fir S 83° W 31 1/2 16' Fir N 42 1/2° W 40 1/2 |
| 15 | 1/16 | Stk. | 10' Cedar S 60° W 23 1/2 |
| 16 | 1/16 | Stk. | 30' Fir North 6° |
| 17 | 1/16 | Stk. | 10' Cedar S 55° W 14° |
| 18 | 1/16 | Stk. | 18' Fir S 88° W 24° 30' " S 20° E 27° 30' " N 71° E 9 1/2 20' " North 21 1/2 |
| 19 | Sec. | Pipe | 30' Fir S 50° W 28° 30' Fir N 9 1/2° E 28° |
| 20 | 1/4 | Pipe | |

C.S. File No. 137
Also Vol. 3, Page 131
M 2 - 8

**LAND SURVEYORS FILE DATA
DO NOT REMOVE FROM OFFICE**