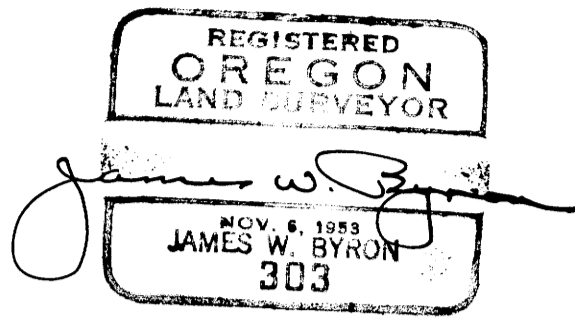


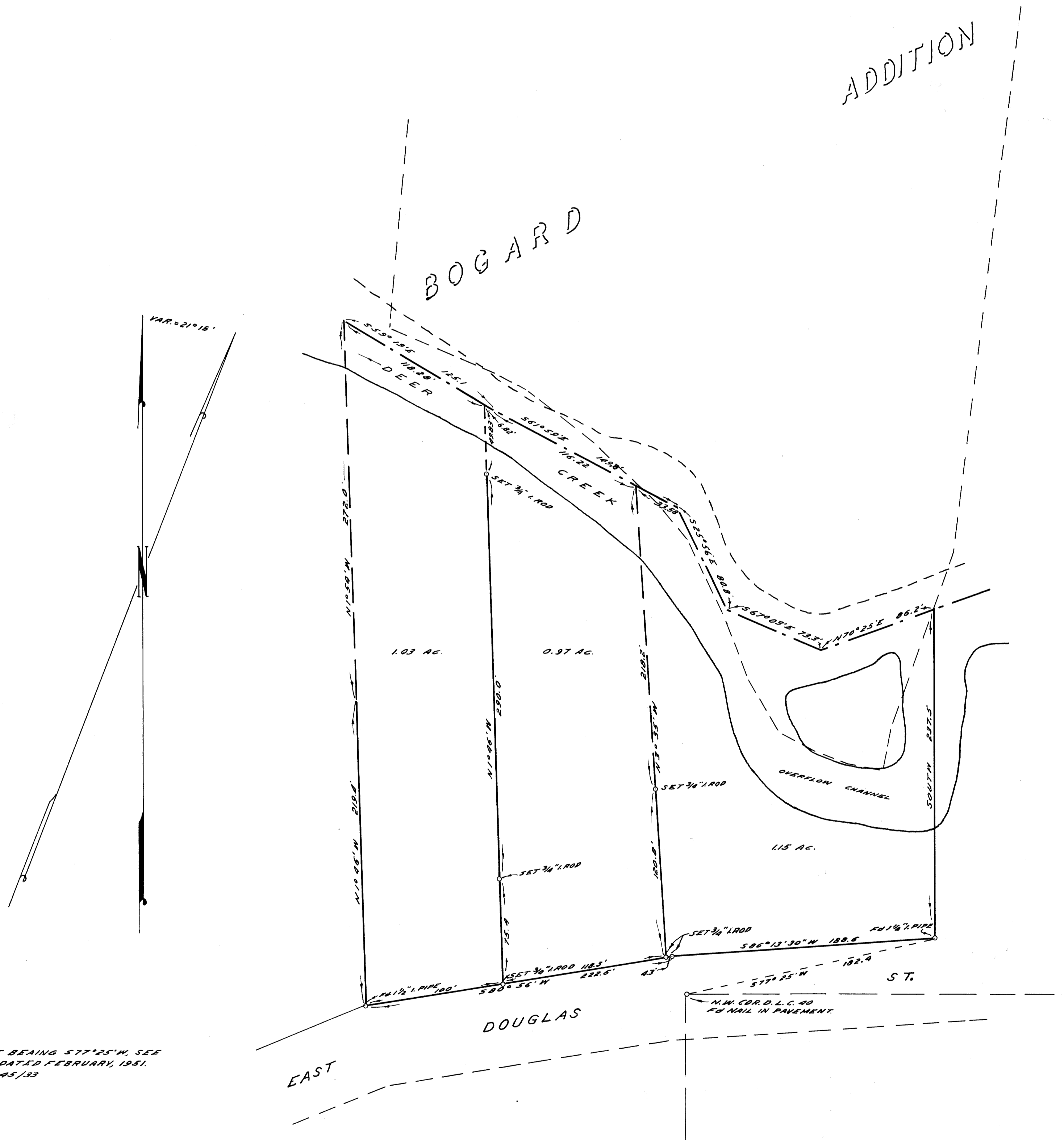
COUNTY SURVEYORS FILE DATA  
DO NOT REMOVE FROM OFFICE

COUNTY SURVEYOR'S OFFICE  
DOUGLAS COUNTY, OREGON

SURVEY FOR DEED DESCRIPTION  
SECTION 19, T27S., R5W., W.M.



FRED M. DARBY COUNTY SURVEYOR  
SURVEYED JULY 26, 1956 BY  
JAMES W. BYRON - DEPUTY SCALE 1" = 50'  
SURVEYED FOR S. C. RICHMOND



NOTE:  
BASE BEARING 577° 25' W, SEE  
SURVEY DATED FEBRUARY, 1951.  
C.S. FILE 45/33