

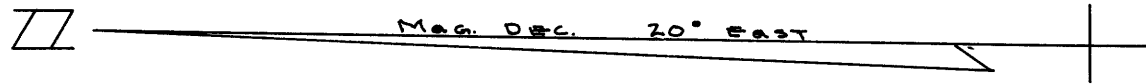
**COUNTY SURVEYORS FILE DATA
DO NOT REMOVE FROM OFFICE**

SURVEY FOR DEED DESCRIPTION
IN 5 1/2 SEC. 15, T.24S., R.7W., W.M.

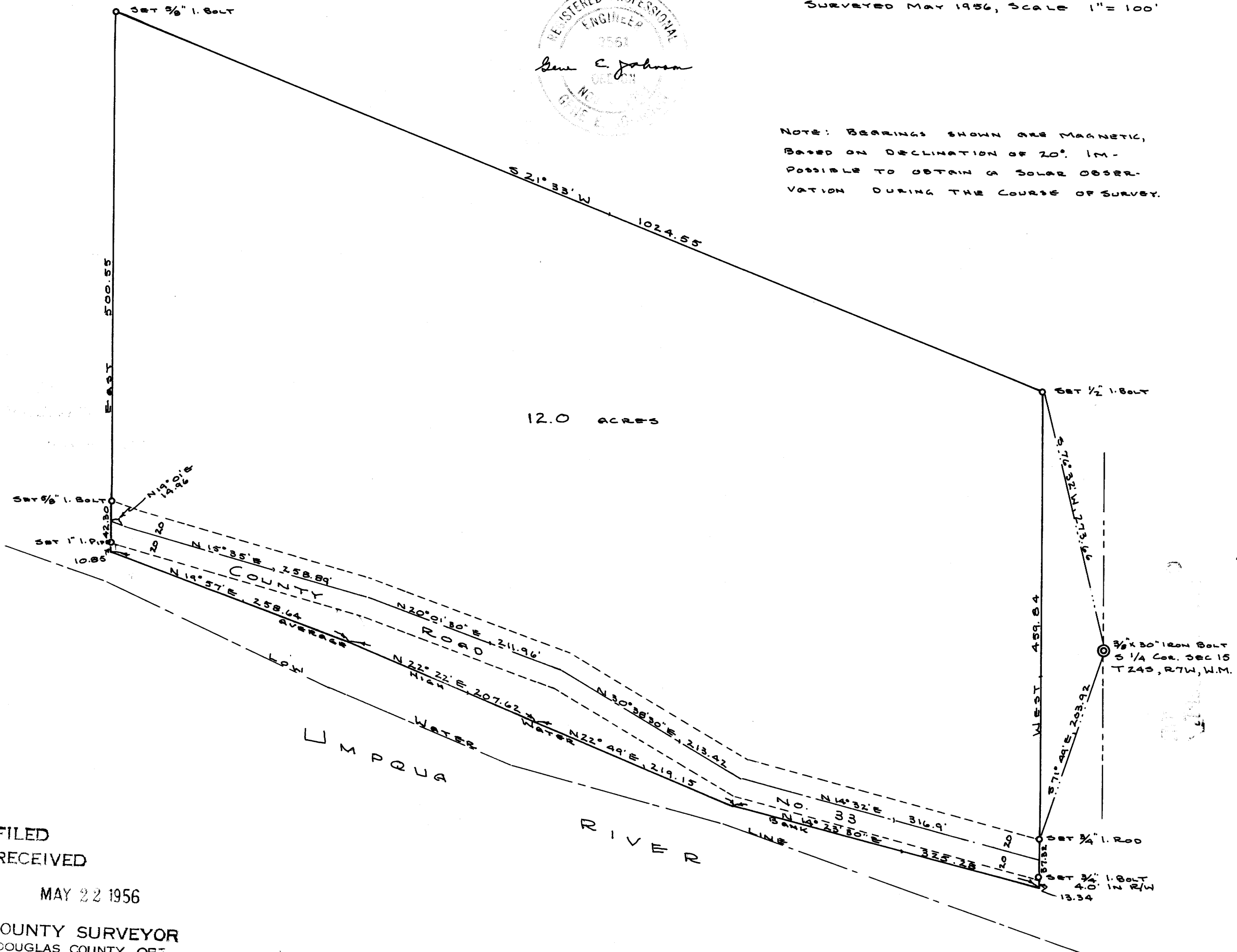
FOR
L. R. OCLUMPAUGH

GENE E. JOHNSON, ENGINEER
ROSEBURG, OREGON

SURVEYED MAY 1956, SCALE 1" = 100'



NOTE: BEARINGS SHOWN ARE MAGNETIC,
BASED ON DECLINATION OF 20°. IM-
POSSIBLE TO OBTAIN A SOLAR OBSER-
VATION DURING THE COURSE OF SURVEY.



FILED
RECEIVED

MAY 22 1956

COUNTY SURVEYOR
DOUGLAS COUNTY, OR.

MAP FILE M2-1-76

C. S. File No. 42/162