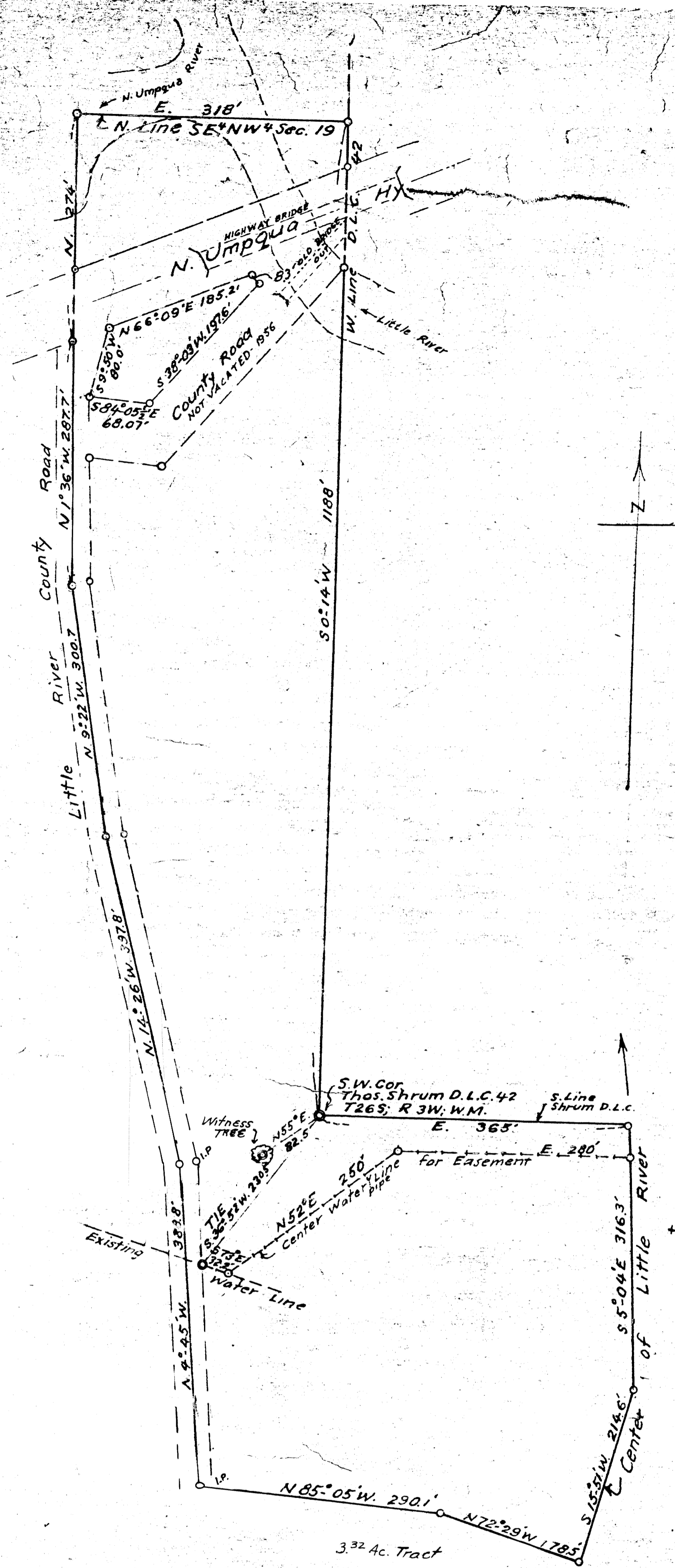


10-7 W



Gen. Sec 19
+ T265; R.3W.

3.32 Ac. Tract

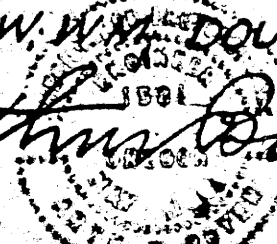
THIS COPY MADE FROM
A XEROX 2510
DATE 1-5-89

COUNTY SURVEYORS FILE DATA
DO NOT REMOVE FROM OFFICE

WALLEN TO RITTER
PORTION OF WALLEN RANCH, GLIDE, ORE
BETWEEN LITTLE RIVER ROAD & CENTER OF
LITTLE RIVER & THE THOS. SHRUM D.L.C. 42 IN
SEC. 19, T.265; R.3W. W.M., DOUGLAS COUNTY
MAR 1956

FILED
RECEIVED
APR 6 1956
COUNTY SURVEYOR
DOUGLAS COUNTY, OR.

Arthur Boyer



MAP FILE M2-171