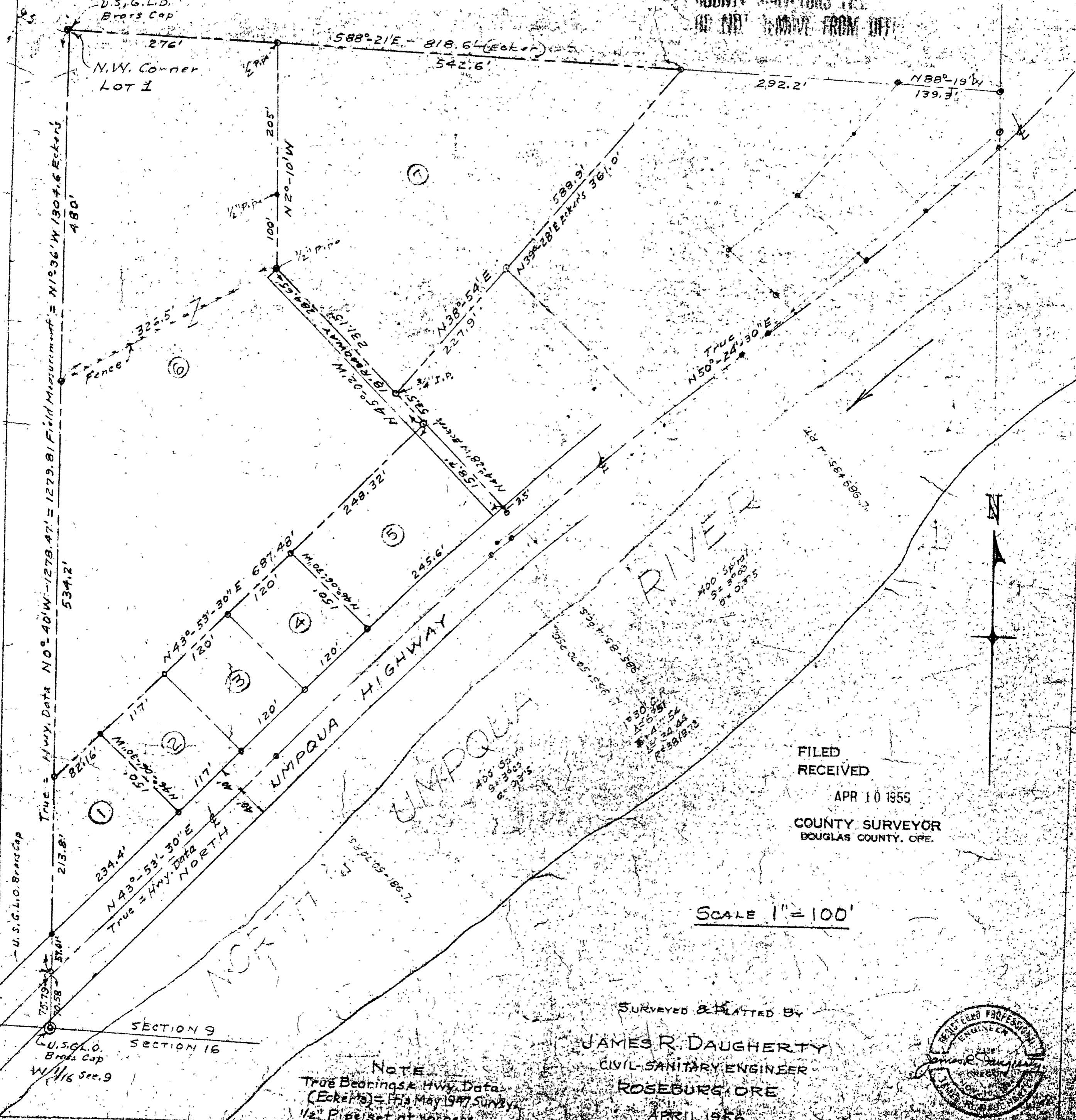


SECTION 9 T26S R3W W.M. DOUGLAS COUNTY ORE

SAM BALL PROPERTY

COUNTY SURVEYORS FIRM
100 EAST WADSWORTH FROM HWY



FILED
RECEIVED
APR 10 1955
COUNTY SURVEYOR
DOUGLAS COUNTY, ORE.

SCALE 1" = 100'

SURVEYED & PLATTED BY
JAMES R. DAUGHERTY
CIVIL-SANITARY ENGINEER
ROSEBURG, ORE



NOTE
True Bearings & Hwy. Data
(Eckers) = F.H.'s May 1947 Survey
1/2" Pipe set at corners.

APRIL 1956 MAP FILE M2-167

U.S.G.L.O. Brass Cap
True = Hwy. Data N0°40'W - 1278.47' = 1279.81 Field Measurement = N19°36'W 1304.6 Eckers
480'
534.2'
213.8'
75.79'
10.58'

U.S.G.L.O. Brass Cap
276'
N.W. Corner LOT 1

SECTION 9
SECTION 16
U.S.G.L.O. Brass Cap
W 1/16 Sec. 9

1
2
3
4
5
6