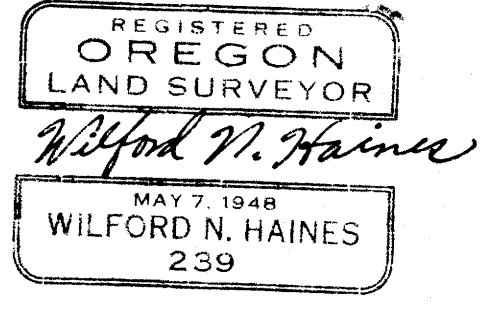


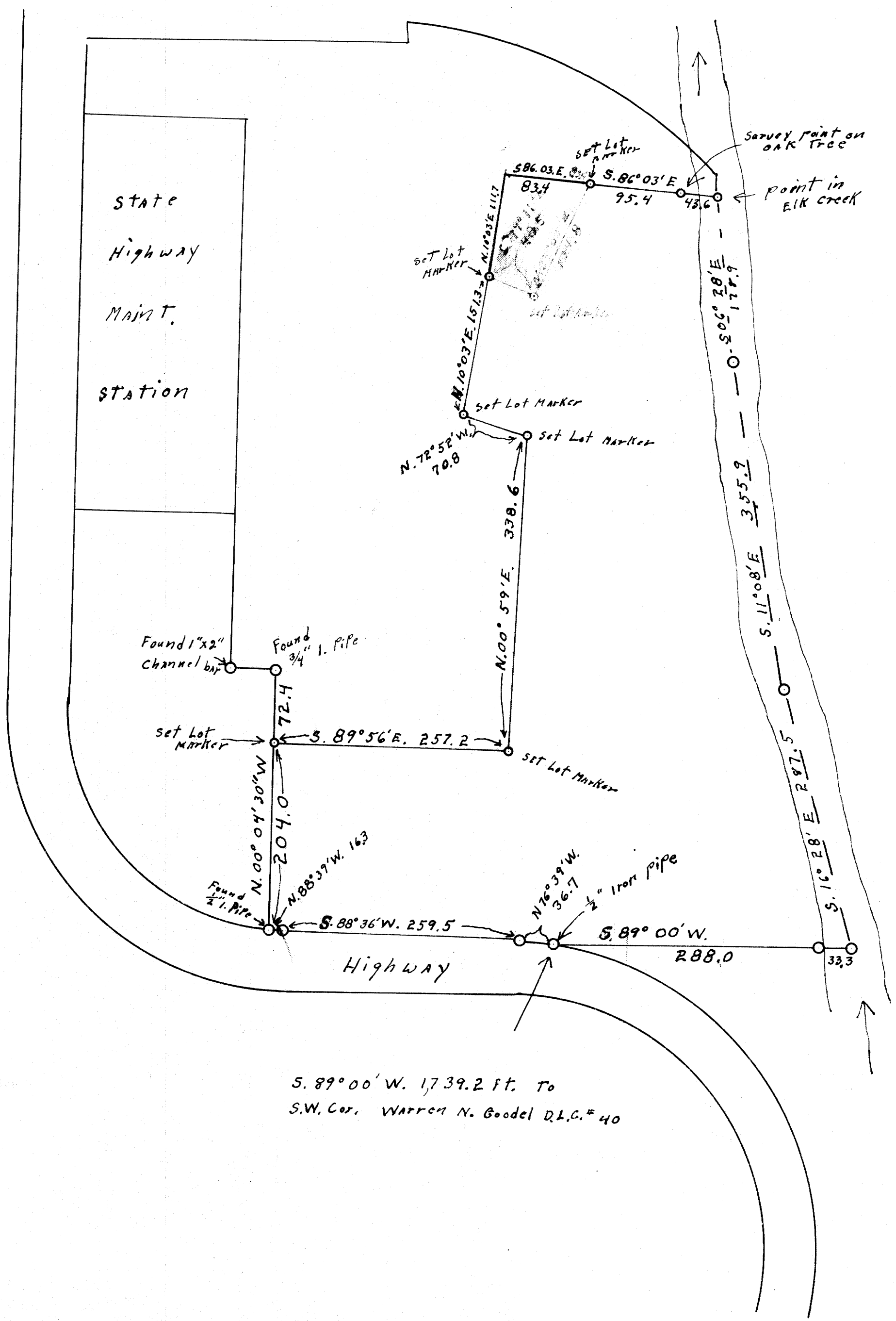
SECT. 17, T 22 S. R 5 W. W.M.  
DRAIN, OREGON

Survey for discription

Note Lot Markers are angle irons  
with BRASS caps inscribed  
Survey point - Wilford N. Haines -  
# 239



For Griswold + Sons



S. 89° 00' W. 1739.2 ft. To  
S.W. Cor. Warren N. Goodel D.L.C. # 40

FILED  
RECEIVED  
APR 11 1956  
COUNTY SURVEYOR  
DOUGLAS COUNTY, OR.

JWB