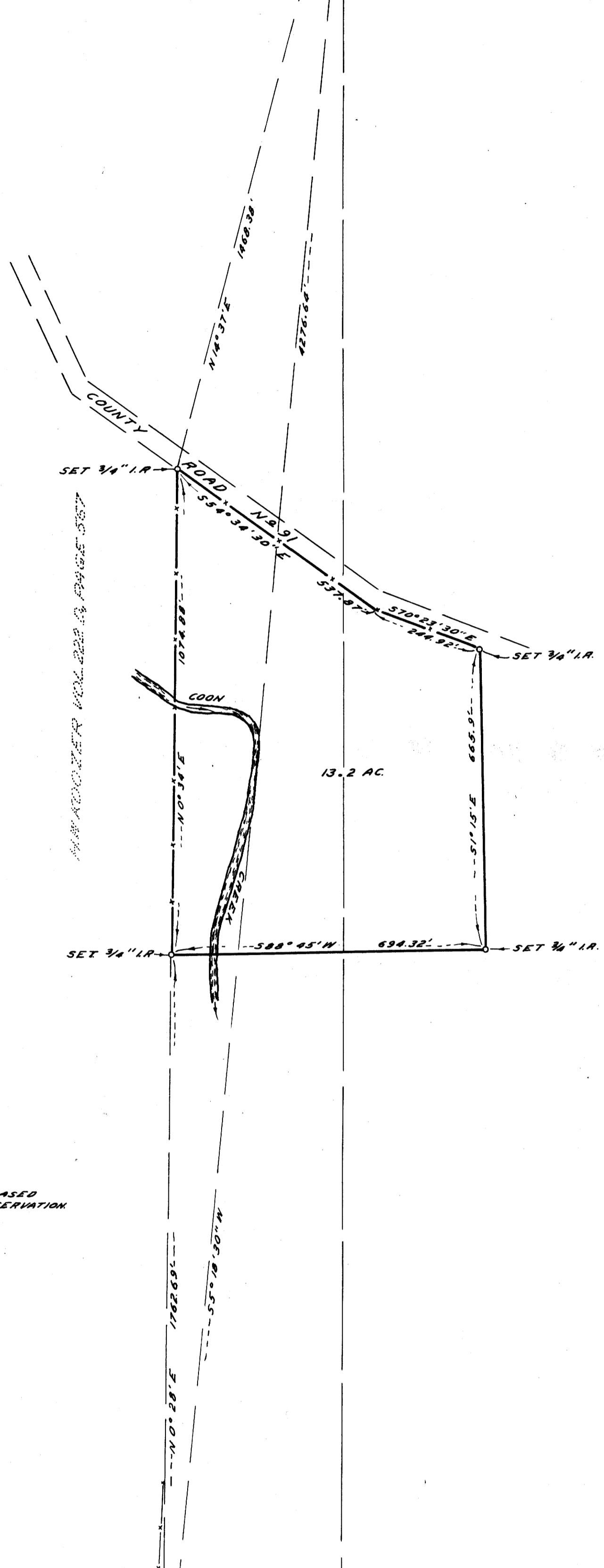


T 25 S, R. 6 W.
9 10
16 15

FOUND ORIGINAL B.T. NOW 24" W.O. N.33°E 29.7', FOUND STUMP HOLE FOR ORIGINAL N.W. B.T. CHECKS FOR BEARING & DISTANCE; FOUND 6"X6"X6" STONE CHISELED "4" ON TOP AT COR. SET BRASS CAP AND 3/8" DIA. CON. 3/16" T. 25 S, R. 6 W. COUNTY SURVEYOR'S OFFICE 1956. SET 6"X6"X6" STONE ALONGSIDE BLAZED & SCRIBED 6" W.O. S. 45° W. 12.3' COR. BLAZED & SCRIBED ORIG. N.E. B.T. STAKE B.T. BLAZED & SCRIBED W. W.O. N. 45° W. 12.3' COR. BLAZED & SCRIBED 6" W.O. S. 30° W. 25.5' N.E. S. B.T. 25 S, R. 6 W.



VAR. 21° 15'

NOTE: BEARINGS ARE BASED ON MAGNETIC OBSERVATION

NOTE: FENCES ARE NOT STRAIGHT

FOUND 24" OAK SHUNK OLD BLAZE CENTER BOTTED, N. 85° E. 22.0'. FOUND STUMP HOLE N. 22° W. 10'; FOUND 6" WAGON AXLE S.W. COR. D.L.E. 25'

COUNTY SURVEYOR'S OFFICE
DOUGLAS COUNTY, OREGON

SURVEY FOR DEED DESCRIPTION
SECTION 15 & 16 T25S, R6W. W.M.

REGISTERED
OREGON
LAND SURVEYOR
James W. Byron
JAMES W. BYRON
303

FRED M. DARBY COUNTY SURVEYOR
SURVEYED FEB. 20, 1956 BY
JAMES W. BYRON - DEPUTY SCALE 1" = 200'
SURVEYED FOR A. STEPHENS

COUNTY SURVEYORS FILE DATA
DO NOT REMOVE FROM OFFICE