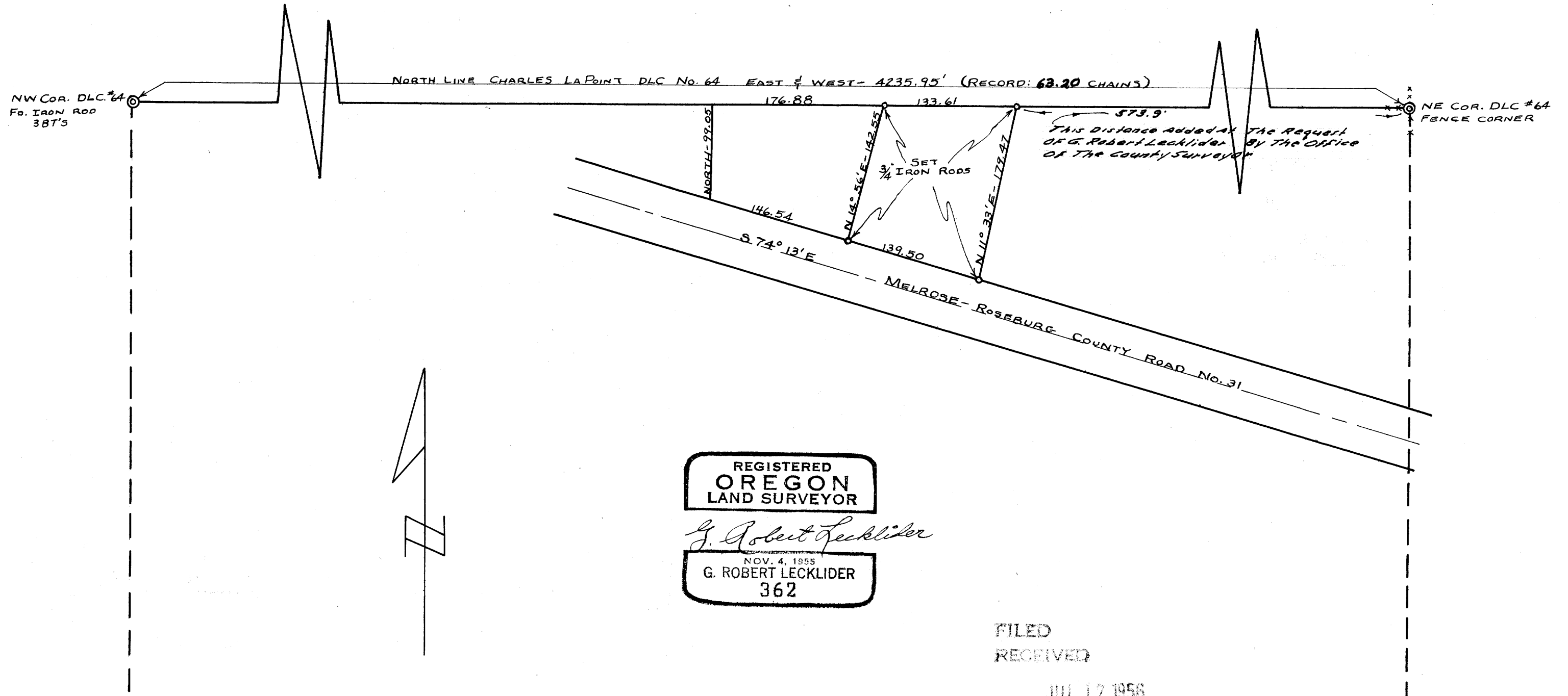


C.W. HAGAN PROPERTY IN
SECTION 6, T27S, R6W, W.M.

COUNTY SURVEYORS FILE DATA
DO NOT REMOVE FROM OFFICE

SHOWING
CERTAIN DEED DESCRIPTIONS

SURVEYED BY: G.R. LECKLIDER JULY, 1956
SURVEYED FOR: HARRY HAGAN SCALE: 1" = 100'



REGISTERED
OREGON
LAND SURVEYOR

G. Robert Lecklider

NOV. 4, 1955
G. ROBERT LECKLIDER
362

FILED
RECEIVED

JUL 17 1956

COUNTY SURVEYOR
DOUGLAS COUNTY, ORE.

JWB

MAP FILE M2-1-55

M 2-55 P