

REGISTERED
OREGON
LAND SURVEYOR

Wilford N. Haines

MAY 7, 1948
WILFORD N. HAINES
239

**SURVEYORS FILE DATA
DO NOT REMOVE FROM OFFICE**

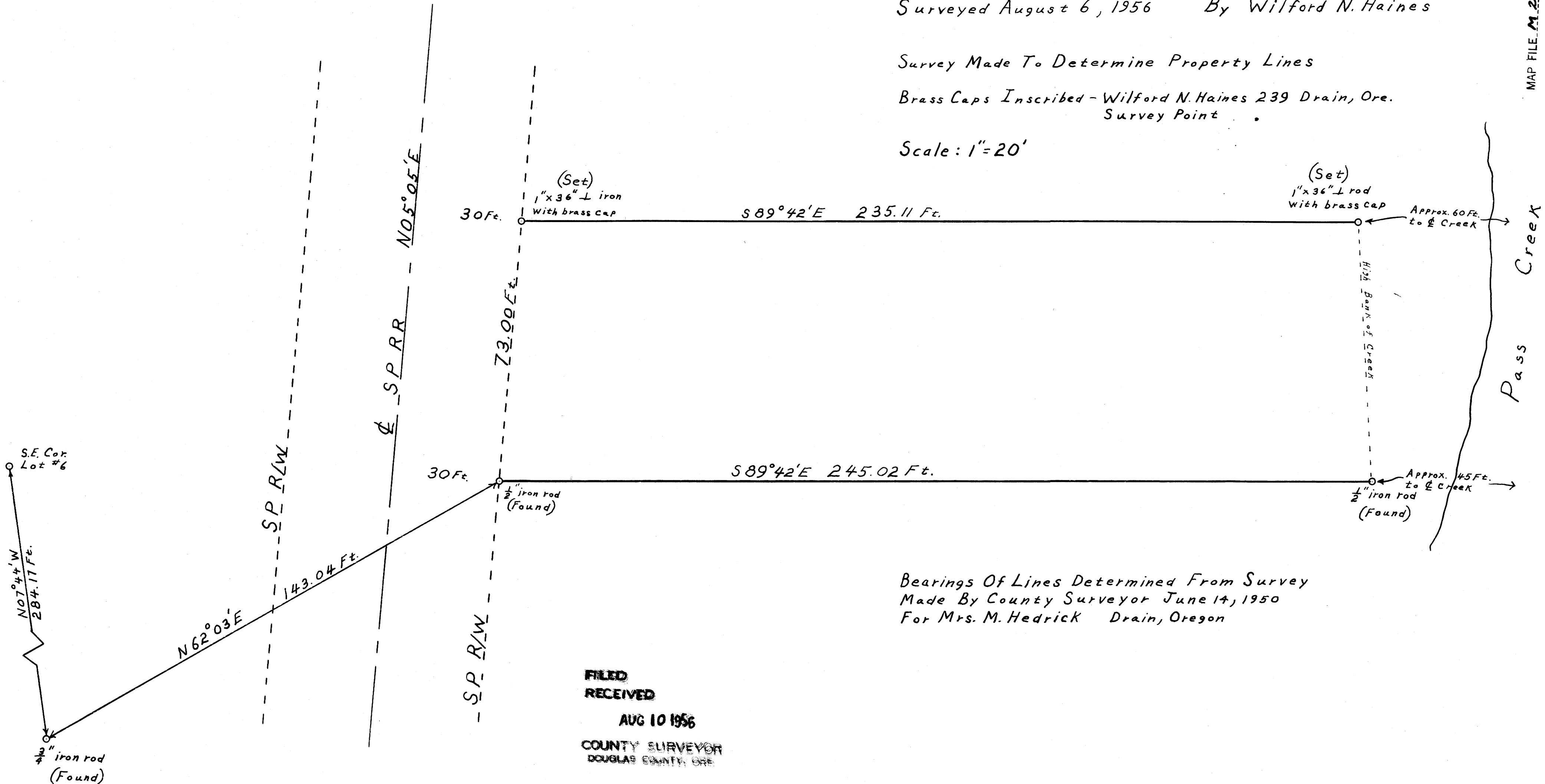
SURVEY of CHARELS L. HUGHES PROPERTY DRAIN OREGON

Surveyed August 6, 1956 By Wilford N. Haines

Survey Made To Determine Property Lines

Brass Caps Inscribed - Wilford N. Haines 239 Drain, Ore.
Survey Point

Scale: 1" = 20'



Bearings Of Lines Determined From Survey
Made By County Surveyor June 14, 1950
For Mrs. M. Hedrick Drain, Oregon

FILED
RECEIVED

AUG 10 1956

COUNTY SURVEYOR
DOUGLAS COUNTY, ORE.

SEC. 17, T22S, R5W.

MAP FILE M. 2 / 54

Pass Creek

M 2-54