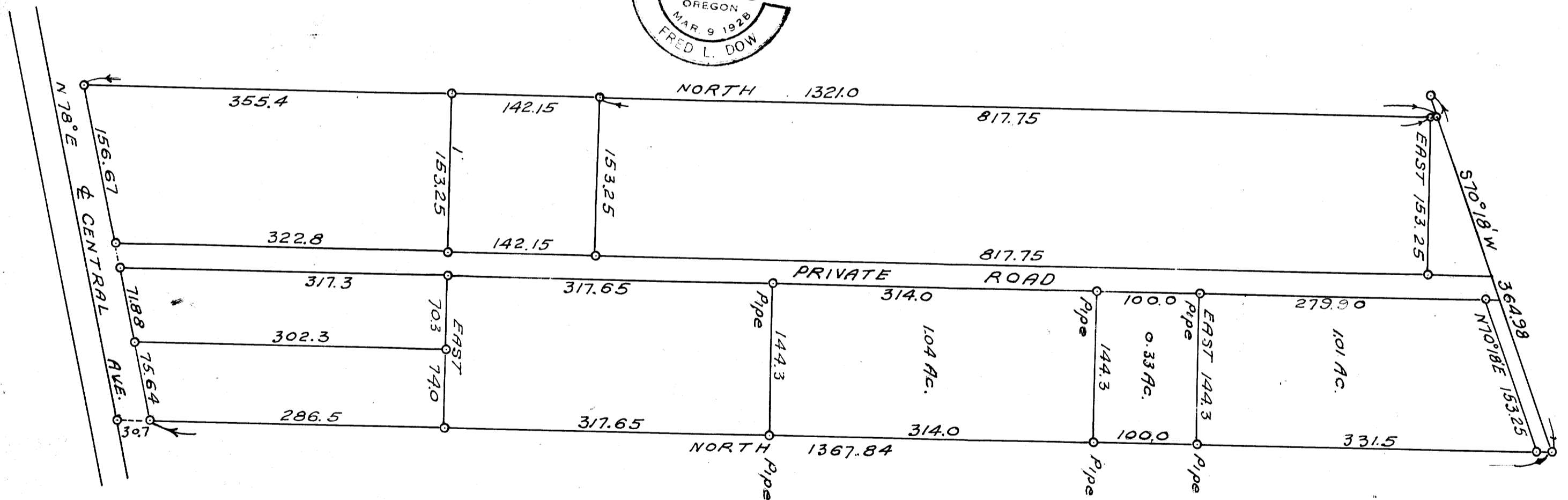


COUNTY SURVEYORS FILE DATA
DO NOT REMOVE FROM OFFICE

W. R. PETTY
PART OF EAST HALF OF LOT II, BLOCK I, PLAT A.
S.L. & W. Co.

MAY 1956

SCALE 1"=100'



FILED
RECEIVED

AUG 6 1956

COUNTY SURVEYOR
DOUGLAS COUNTY, ORE.

AWB

MAP FILE... M 2-1-5-3