

FILED
RECEIVED

AUG 6 1955

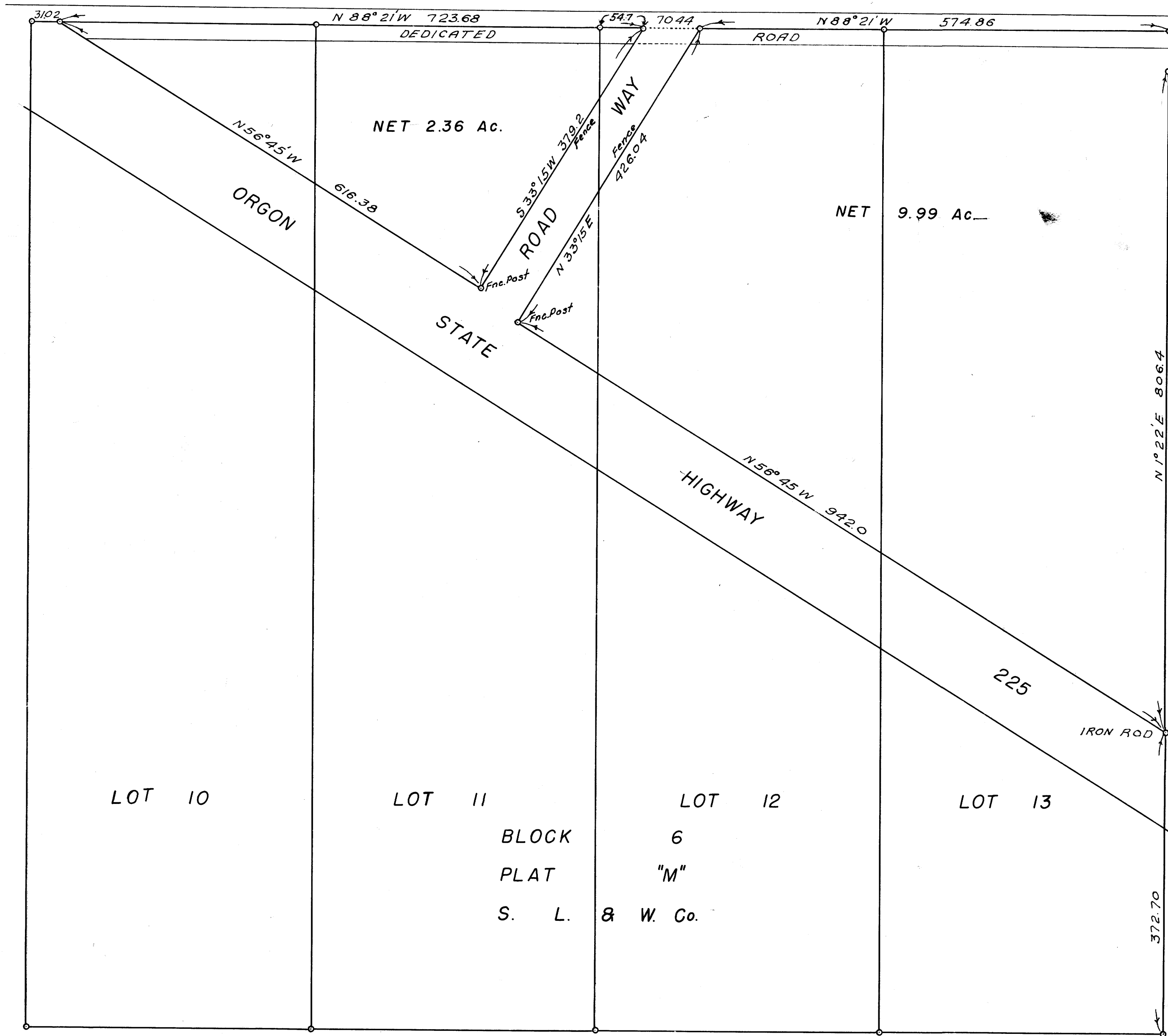
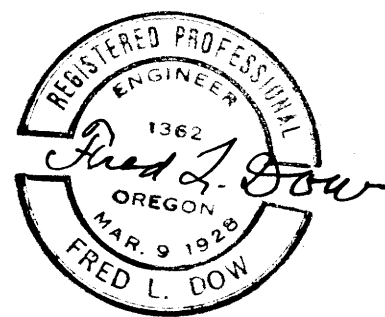
COUNTY SURVEYOR
DOUGLAS COUNTY ORE.

JMD

M 2-50

COUNTY SURVEYORS FILE DATA
NOT REMOVE FROM OFFICE

E. J. SMITH
PART OF LOTS 10, 11, 12 & 13
BLOCK 6 PLAT "M"
S. L. & W. Co.
JUNE 1955 1" = 100'



MAP FILE M 2-150
C 5 50/32