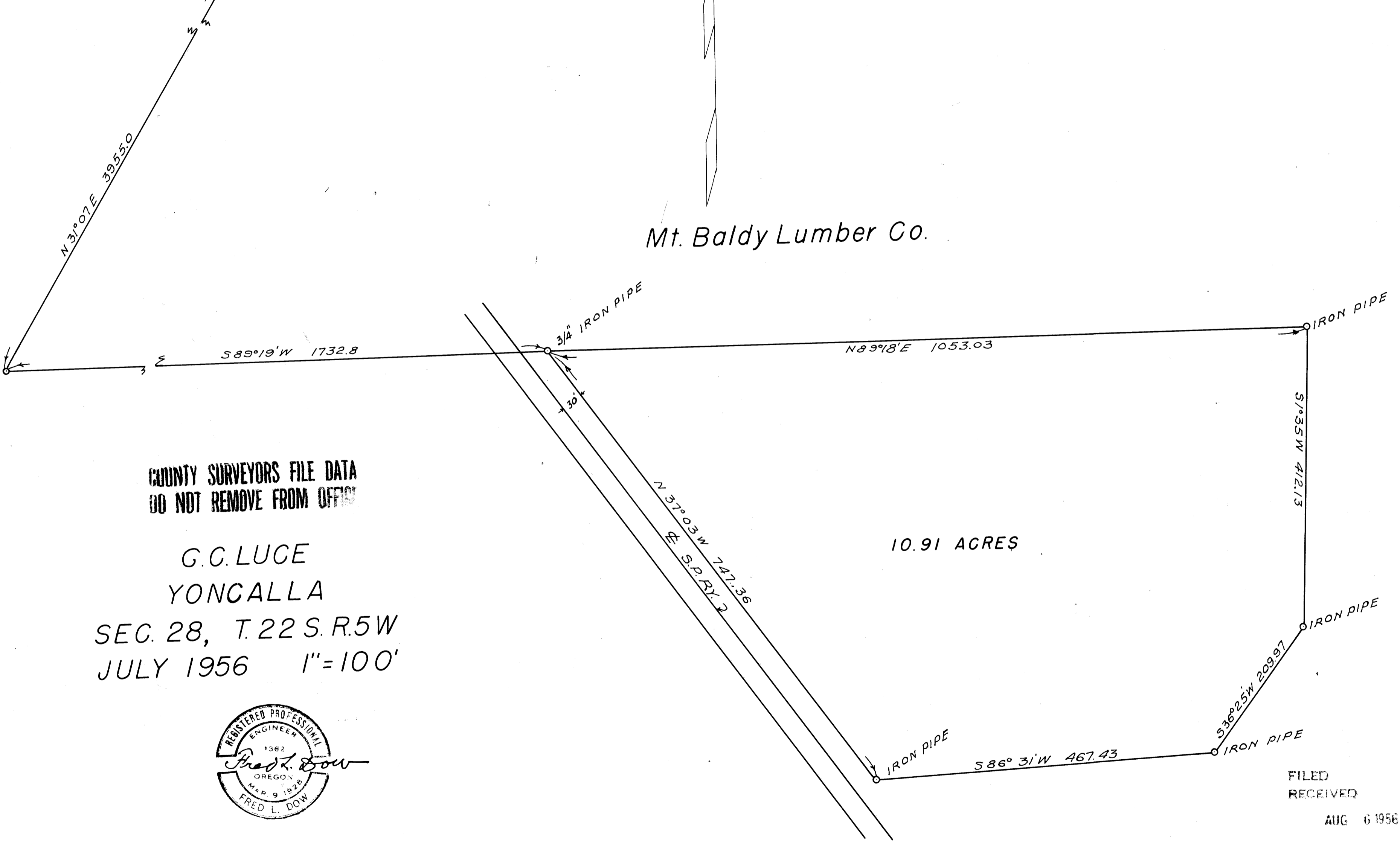
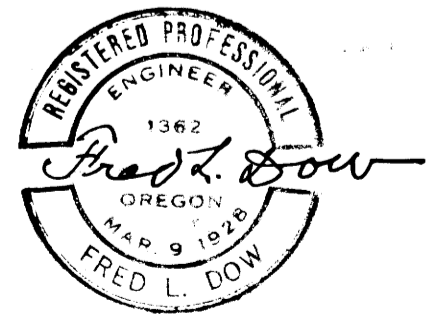


N.W. CORNER JESSE APPEGATE D.L.C. No. 38
SEC. 21 T. 22 S. R. 5 W.



COUNTY SURVEYORS FILE DATA
DO NOT REMOVE FROM OFFICE

G.C. LUCE
YONCALLA
SEC. 28, T. 22 S. R. 5 W
JULY 1956 1"=100'



FILED
RECEIVED
AUG 6 1956
COUNTY SURVEYOR
DOUGLAS COUNTY, ORE.
JMB