

COUNTY SURVEYORS FILE DATA  
DO NOT REMOVE FROM OFFICE

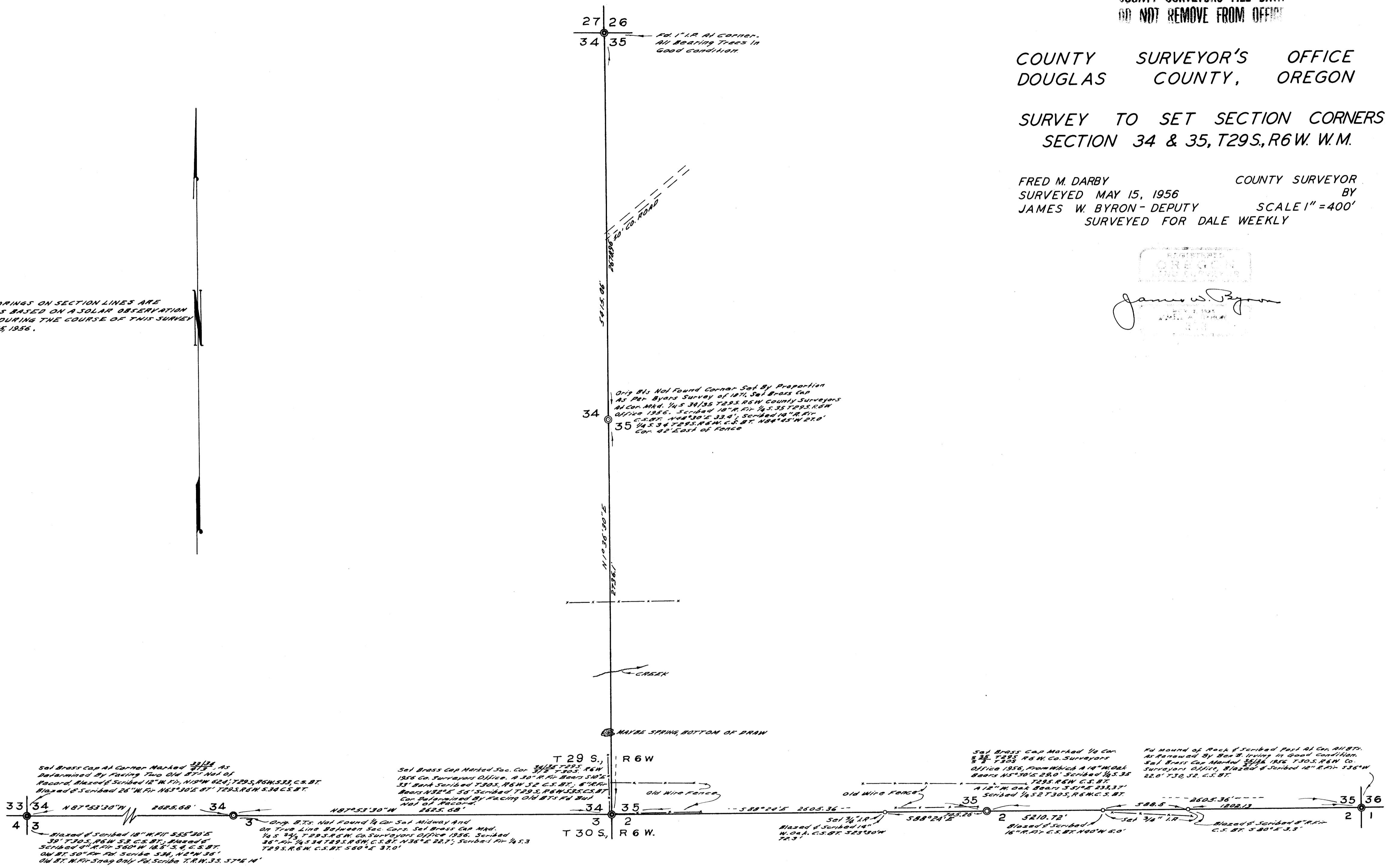
COUNTY SURVEYOR'S OFFICE  
DOUGLAS COUNTY, OREGON

SURVEY TO SET SECTION CORNERS  
SECTION 34 & 35, T29S, R6W. W.M.

FRED M. DARBY COUNTY SURVEYOR  
SURVEYED MAY 15, 1956 BY  
JAMES W. BYRON - DEPUTY SCALE 1" = 400'  
SURVEYED FOR DALE WEEKLY

James W. Byron  
COUNTY SURVEYOR  
MAY 15 1956  
DOUGLAS COUNTY, OREGON

NOTE:  
BEARINGS ON SECTION LINES ARE  
TRUE AS BASED ON A SOLAR OBSERVATION  
TAKEN DURING THE COURSE OF THIS SURVEY  
ON MAY 15, 1956.



Set Brass Cap At Corner Marked 33/34, As Determined By Facing Two Old Brs. Not of Record. Blazed & Scribbled 12" W. Fir, N10°W 62'; T29S, R6W, S33, C.S. BT. Blazed & Scribbled 26" W. Fir, N63°30'E 87'; T29S, R6W, S34, C.S. BT.

Set Brass Cap Marked Sec. Cor. 34/35, T29S, R6W, 1956 Co. Surveyors Office. A 30" R. Fir. Bore S10°S 33' Bore Scribed T30S, R6W S2, C.S. BT.; 6" R. Fir. Bore N32°E 56' Scribbled T29S, R6W S35, C.S. BT. Cor. Determined by Facing Old Brs. At But Not of Record.

Set Brass Cap Marked 1/4 Cor. 34/35, T29S, R6W, 1956 Co. Surveyors Office. From Which A 14" W. Oak Bore N5°30'S 29.0' Scribbled 1/4 S. 35. Blazed & Scribbled 14" W. Oak Bore S 30°E 23.3' Scribbled 1/4 S. 2 T30S, R6W, C.S. BT.

Set Brass Cap Marked 1/4 Cor. 35/36, T29S, R6W, Co. Surveyors Office. Blazed & Scribbled 12" R. Fir. S36°W 22.0' T30, S2, C.S. BT.

Found of Rock & Scribbled Post At Cor. Old Brs. As Renewed by Box B. In Very Good Condition. Set Brass Cap Marked 35/36, 1956 T30S, R6W Co. Surveyors Office, Blazed & Scribbled 12" R. Fir. S36°W 22.0' T30, S2, C.S. BT.