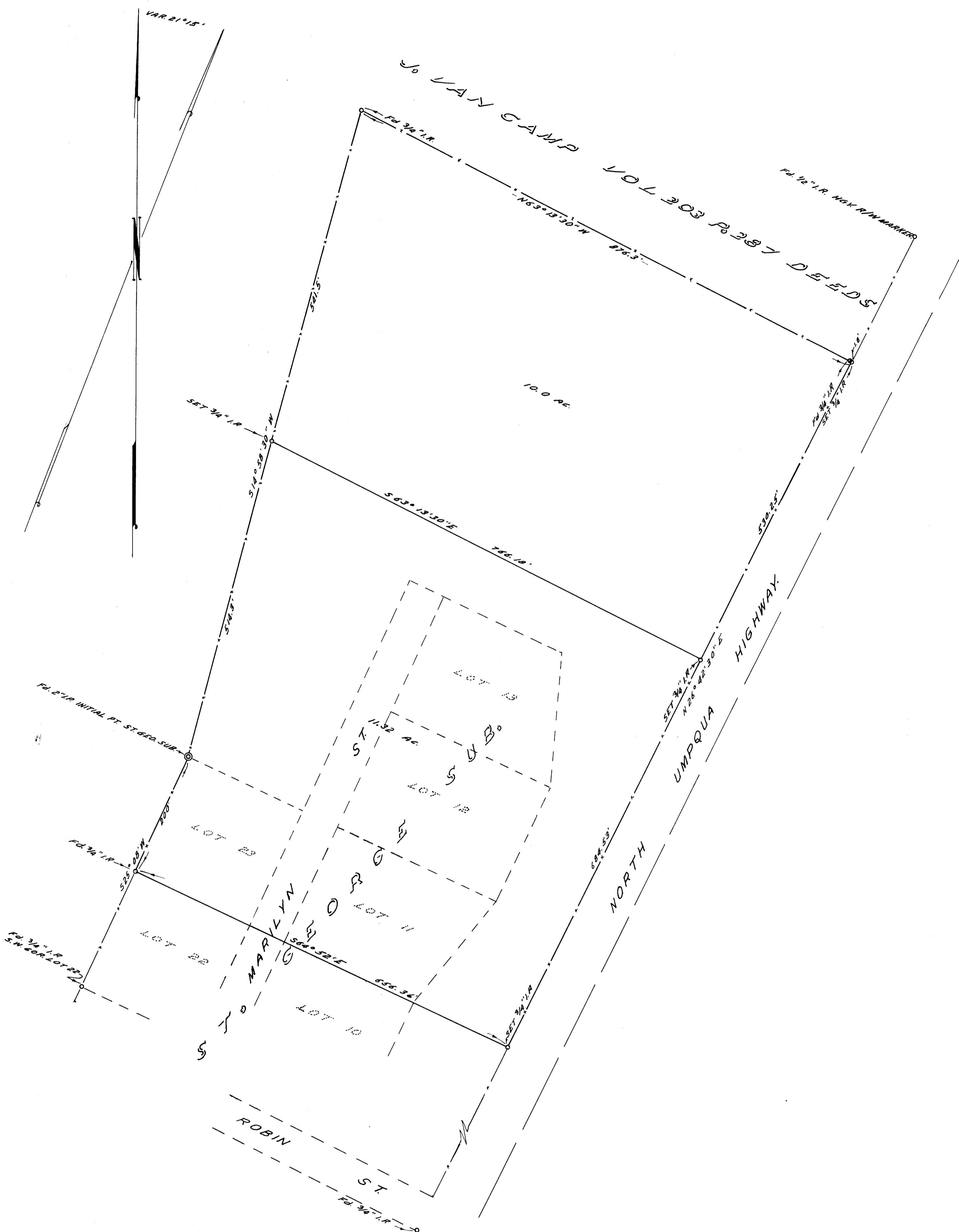


NOTE:
 BASE BEARING $N25^{\circ}42'30''E$ ALONG
 NORTH UMPQUA HIGHWAY AS PER PLAT
 OF ST. GEORGE SUBDIVISION.



COUNTY SURVEYOR'S OFFICE
 DOUGLAS COUNTY OREGON

SURVEY FOR DEED DESCRIPTION
 SECTION 13, T27S., R5W, W.M.

James W. Byron

FRED M. DARBY COUNTY SURVEYOR
 SURVEYED MAY 28, 1956 BY
 JAMES W. BYRON - DEPUTY SCALE 1" = 100'
 SURVEYED FOR R. B. SPRINGER

COUNTY SURVEYORS FILE DATA
 DO NOT REMOVE FROM FILE