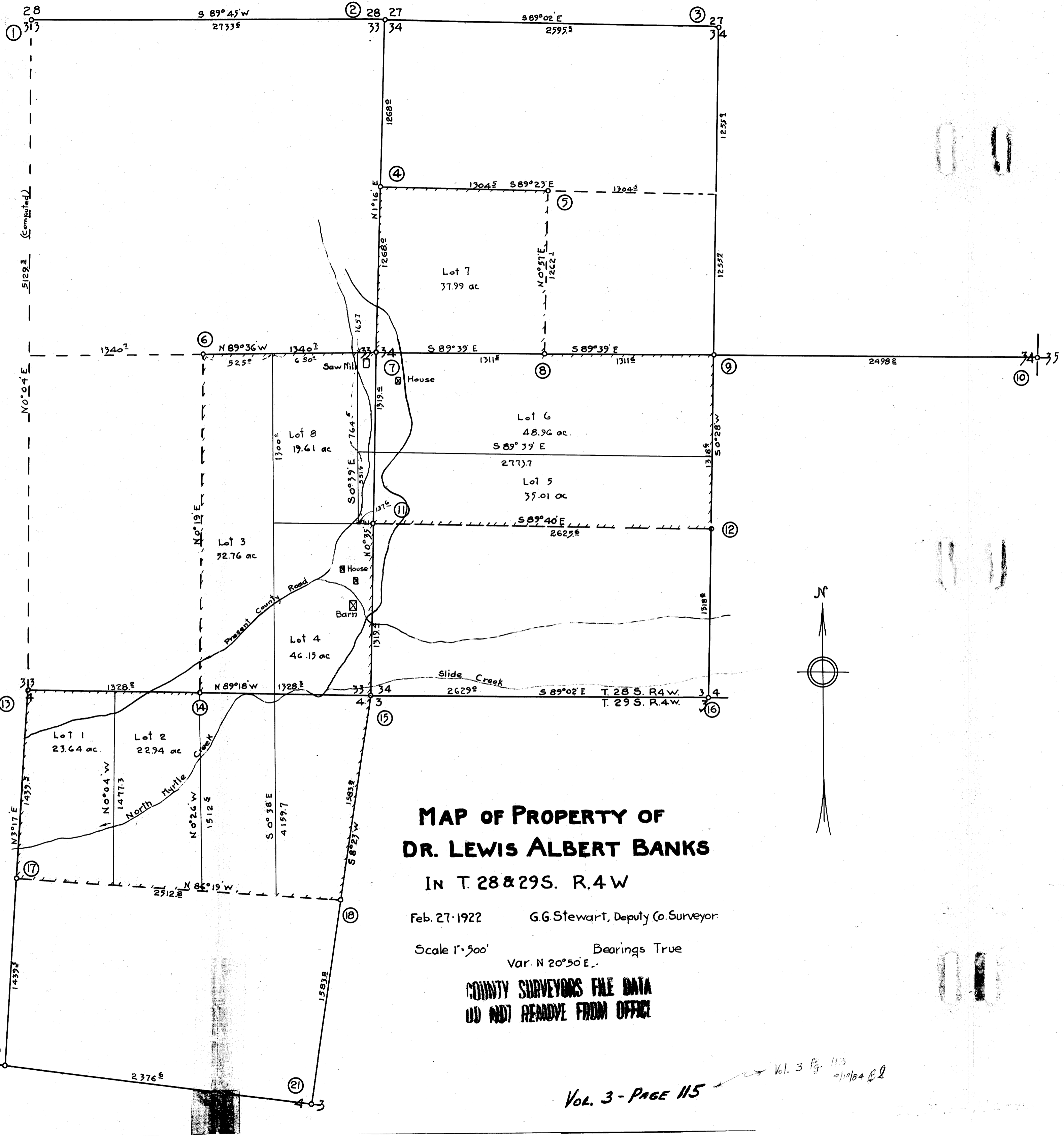


No.	Description	Witness Trees
1	1/4 Corner 28 & 33	Iron Pipe 44' Fir N 30° E 142 ft 24' W Fir S 28° W 73 ft
2	Section Cor. 27-28-33-34	Iron Pipe Orig B.T.s Standing
3	1/4 Corner 27 & 34	Iron Pipe 24' Fir N 89° E 202 ft 24' Laurel S 17° W 462 ft
4	1/6 Corner	Iron Pipe 24' Fir South 60 ft
5	1/6 Corner	Iron Pipe 18' Fir N 33° E 72 ft
6	1/6 Corner	Iron Pipe 18' Red Cedar North 50 ft
7	1/4 Corner 33 & 34	Iron Pipe 24' Fir N 64° W 226 ft 12' Maple N 6° 30' W 101 ft
8	1/6 Corner	Iron Pipe 12' Fir S 1° W 142 ft
9	Center Section 34	Iron Pipe 24' Fir N 15° W 92 ft 18' Fir S 47° E 342 ft
10	1/4 Corner 34 & 35	Iron Pipe 24' Fir N 20° E 492 ft 18' Fir S 64° W 332 ft
11	1/6 Corner	Iron Pipe 12' Alder S 21° E 128 ft
12	1/6 Corner	Iron Pipe 18' Fir S 10° E 32 ft
13	1/4 Corner 33 & 4	Iron Pipe 14' Fir N 26° E 42 ft 10' Fir S 30° W 33 ft
14	1/6 Corner	Iron Pipe 48' Fir N 11° W 174 ft
15	Section Cor. 3-4-33-34	Iron Pipe 30' Fir S 54° E 472 ft 28' Fir S 68° W 172 ft No other trees suitable
16	1/4 Corner 34-3	Iron Pipe 30' Fir N 80° E 232 ft 30' Fir S 22° E 592 ft
17	1/6 Corner	Iron Pipe 24' Fir N 72° W 130 ft
18	1/6 Corner	Iron Pipe 10' Fir N 74° W 62 ft 18' Fir N 23° E 322 ft
19	1/4 Corner 4 & 5	6' Hewed Yew Post Original B.T.s
20	1/4 Corner Center Sec. 4	Iron Pipe 18' Fir N 52° E 202 ft 24' Laurel N 30° W 582 ft
21	1/4 Corner 4 & 3	Iron Pipe 18' Fir S 25° W 222 ft 12' Fir N 21° W 232 ft



**MAP OF PROPERTY OF  
 DR. LEWIS ALBERT BANKS  
 IN T. 28 & 29 S. R. 4 W**

Feb. 27-1922 G.G. Stewart, Deputy Co. Surveyor

Scale 1" = 500' Bearings True  
 Var. N 20° 50' E.

**COUNTY SURVEYORS FILE DATA  
 DO NOT REMOVE FROM OFFICE**

**VOL. 3 - PAGE 115**

Vol. 3 Pg. 113  
 10/10/84 B2