

COUNTY SURVEYOR'S OFFICE  
DOUGLAS COUNTY, OREGON

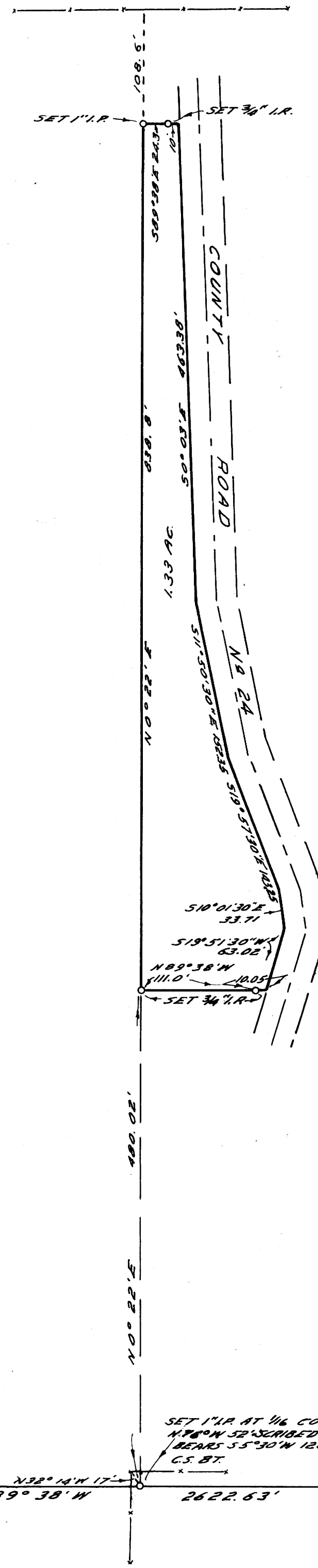
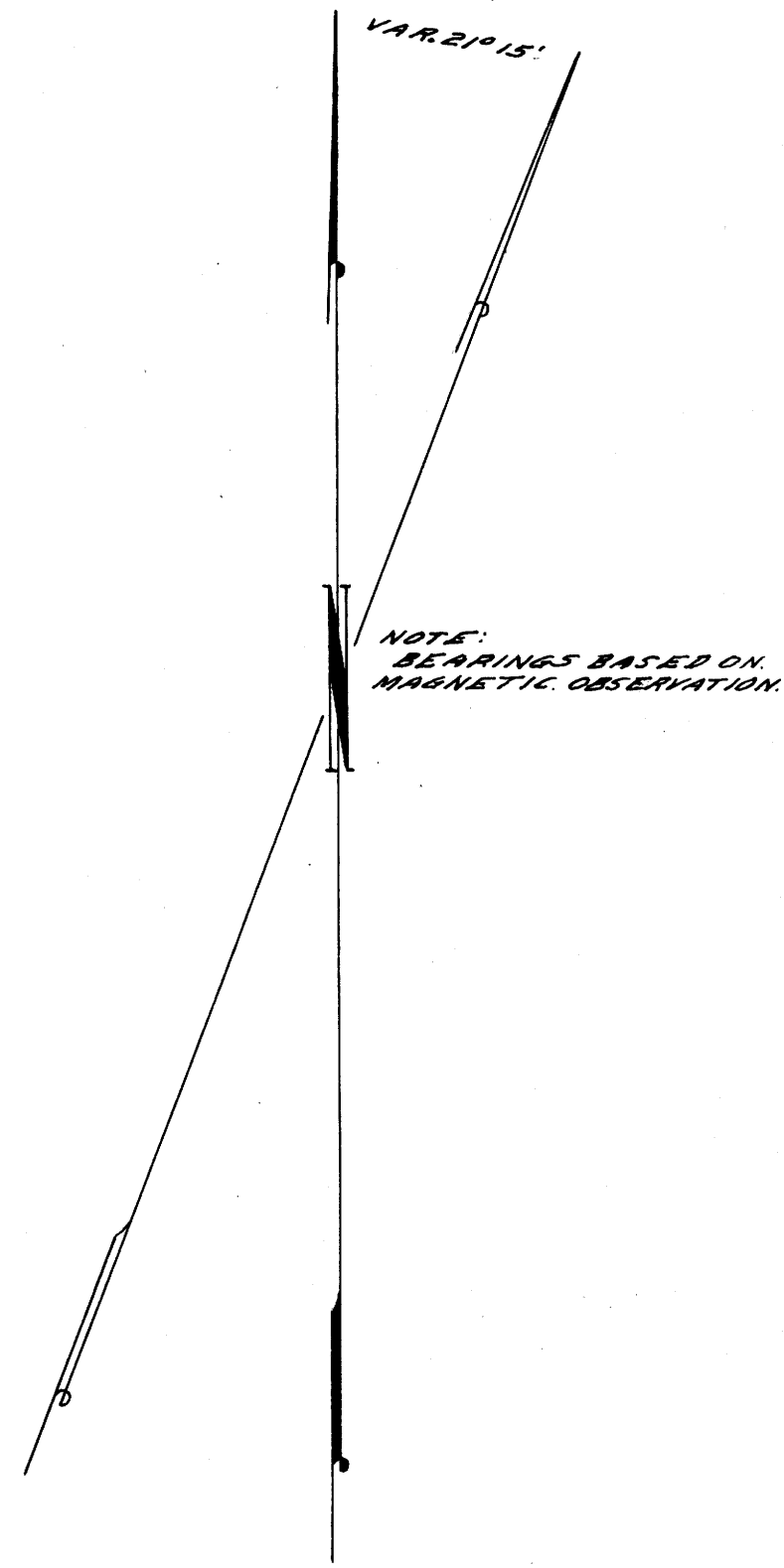
SURVEY FOR DEED DESCRIPTION  
SECTION 6, T23S., R5W., W.M.

FRED M. DARBY COUNTY SURVEYOR  
SURVEYED MAY 7, 1956 BY  
JAMES W. BYRON - DEPUTY SCALE 1" = 100'  
SURVEYED FOR W. R. COOK

REGISTERED  
OREGON  
LAND SURVEYOR

NOV. 8, 1883  
JAMES W. BYRON  
303

COUNTY SURVEYORS FILE  
DO NOT REMOVE FROM OFFICE



FD 3/4" IRON ROD WITH FLANGE  
6.3" X 3" POST. DISTANCES TO BT'S PER REC.  
SE. BT. BEARS S45°E; NE BT BEARS N17°E

SET 1 1/4" IR AT 1/4 COR. 12" R. W. IR BEARS  
N70°W 50' SCRIEDED E 1/4 S. 625 BT. 4" IR  
BEARS S5°30'W 126.5' SCRIEDED E 1/4 S. 7  
6.5 BT.

SET BRASS CAP MKD. 915  
COUNTY SURVEYORS OFFICE 318 1896  
FROM ORIG. BT'S. BLAZED & SCRIEDED  
18" IRON PIPER STAKE 46" S. 4225 S. W. S. BT.  
BLAZED & SCRIEDED 18" W.O. S. 1120 W. 120"  
S. 723 S. S. W. C.S. BT. BLAZED &  
SCRIEDED 18" W.O. N. 256 223' S. C.S. BT.