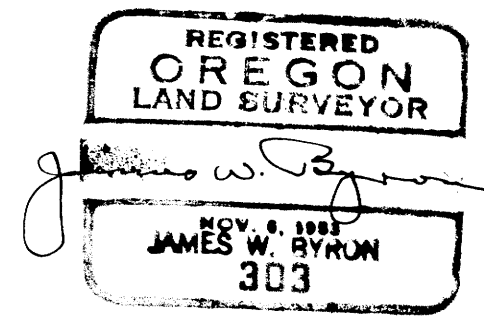


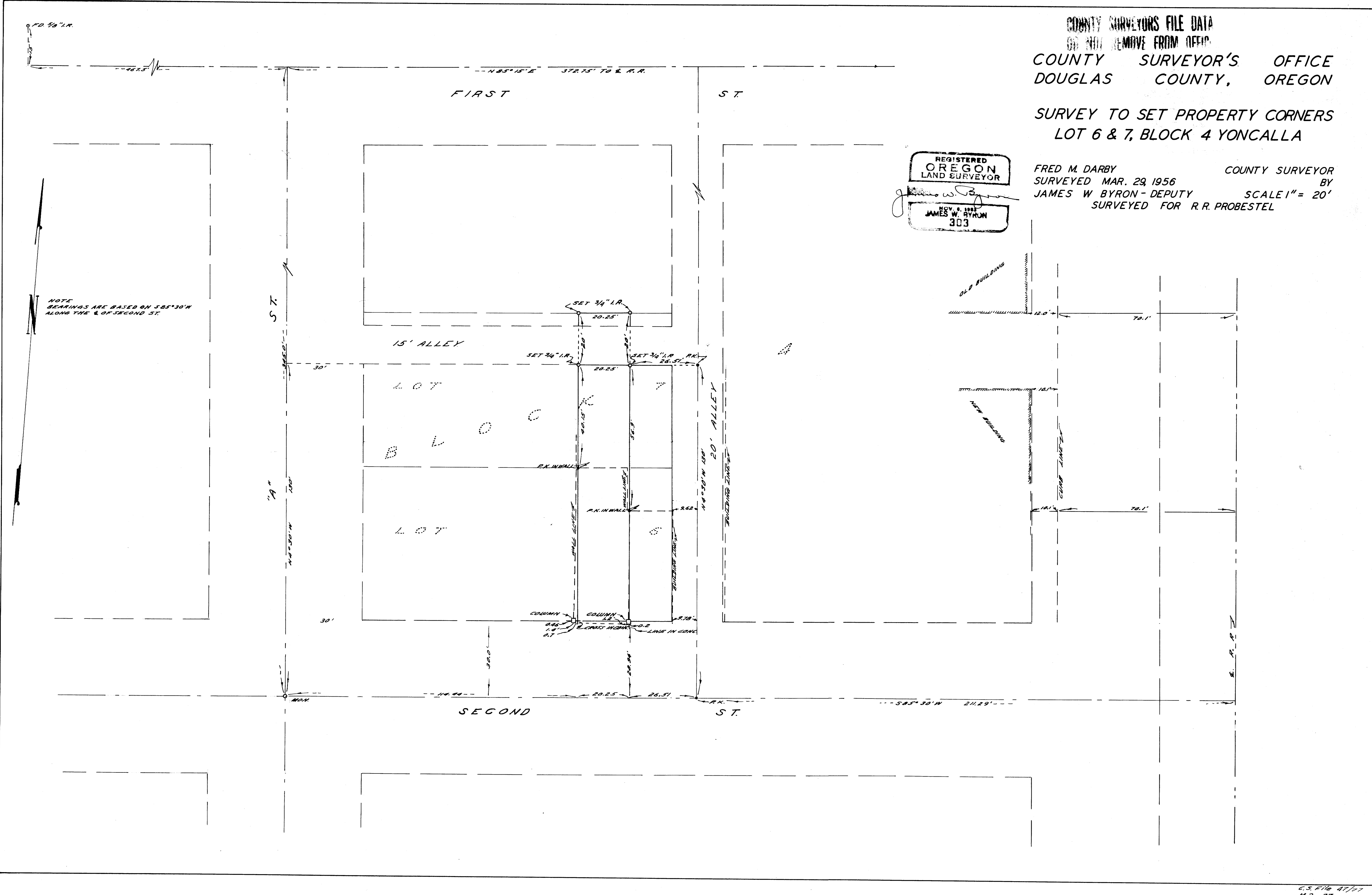
COUNTY SURVEYORS FILE DATA  
 DO NOT REMOVE FROM OFFICE  
 COUNTY SURVEYOR'S OFFICE  
 DOUGLAS COUNTY, OREGON

SURVEY TO SET PROPERTY CORNERS  
 LOT 6 & 7, BLOCK 4 YONCALLA

FRED M. DARBY COUNTY SURVEYOR  
 SURVEYED MAR. 29, 1956 BY  
 JAMES W. BYRON - DEPUTY SCALE 1" = 20'  
 SURVEYED FOR R.R. PROBESTEL



NOTE  
 BEARINGS ARE BASED ON S85°30'W  
 ALONG THE E. OF SECOND ST.



C.S. FILE 47/77  
 MAP FILE M2-37