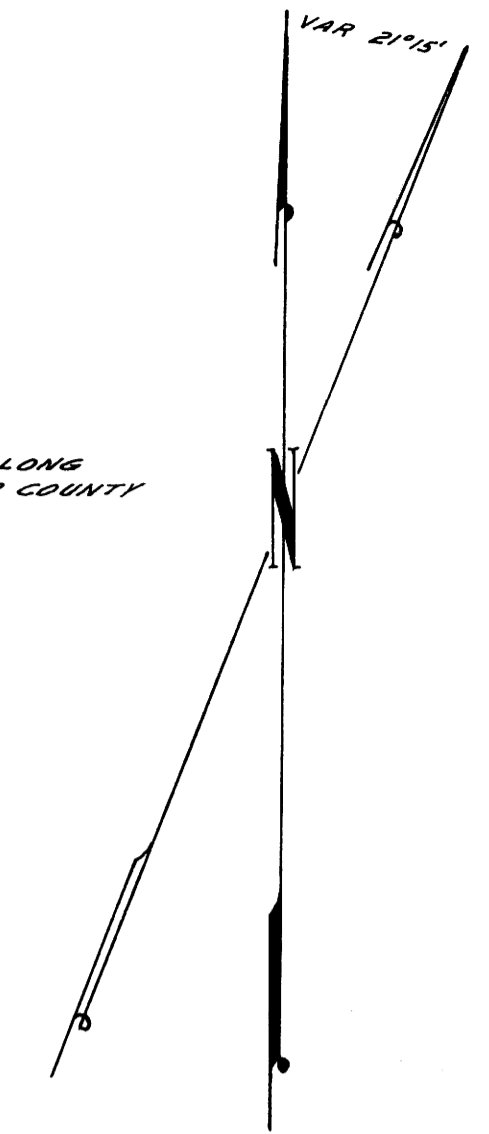


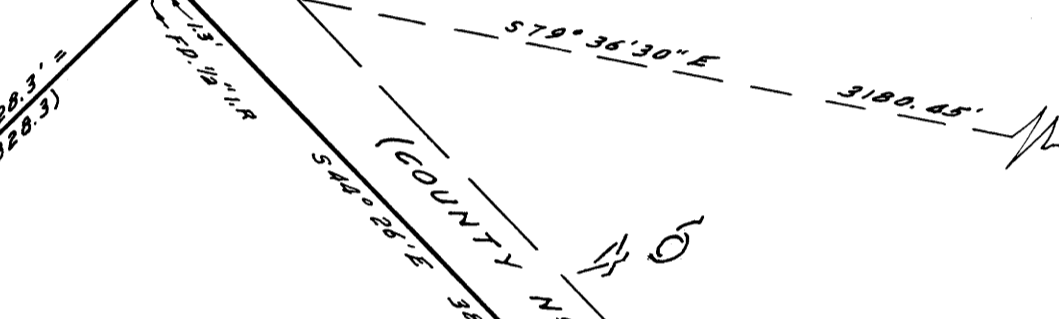
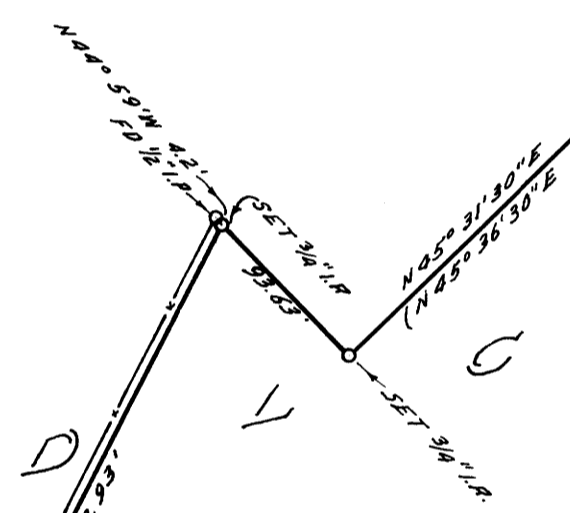
NOTE: BASE OF BEARING 544°26'E ALONG COUNTY ROAD, SEE FILE 46/13 COUNTY SURVEYORS OFFICE.



GLENGARRY ROBERTS

LOT 3

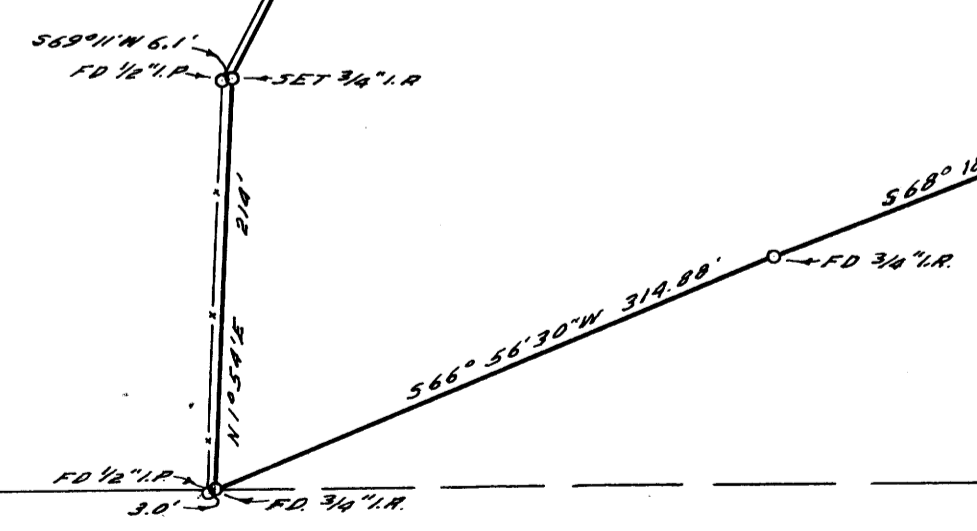
JESSE



S.E. CORNER JESSE ROBERTS
D.L.C. NR 44 T.28S, R.5W

7.73 AC.

ROAD



COUNTY SURVEYOR'S OFFICE
DOUGLAS COUNTY, OREGON

SURVEY TO SET PROPERTY CORNERS
LOT 3 & ROBERTS D. L. C. 46 IN SEC.
24. T 28 S., R. 6 W. W.M.

FRED M. DARBY, COUNTY SURVEYOR
SURVEYED APRIL 11, 1956 BY
JAMES W. BYRON - DEPUTY SCALE 1" = 100'
SURVEYED FOR ORLEY THOMPSON

REGISTERED
OREGON
LAND SURVEYOR

JAMES W. BYRON
NOV. 6, 1953
JAMES W. BYRON
303

COUNTY SURVEYORS FILE DATA
DO NOT REMOVE FROM OFFICE