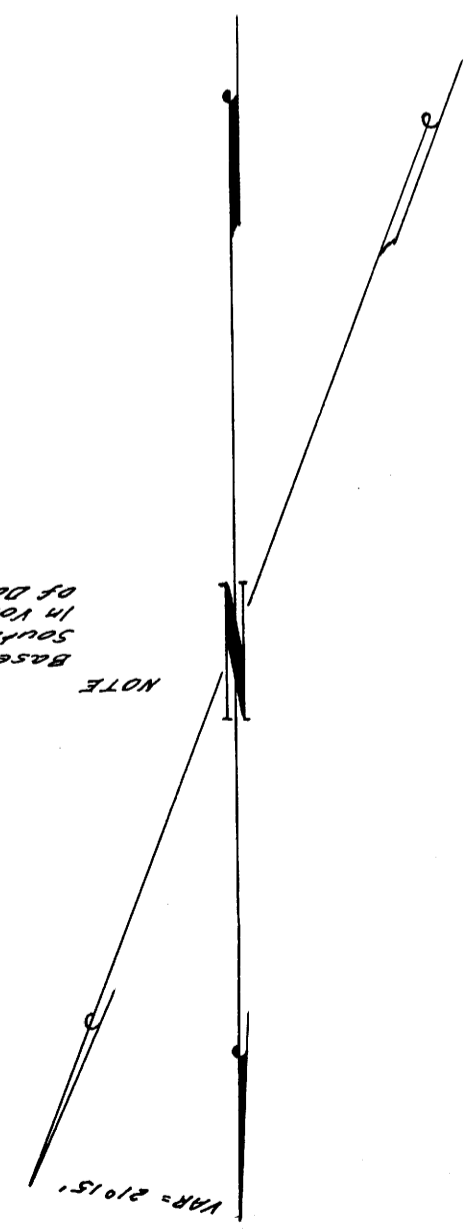
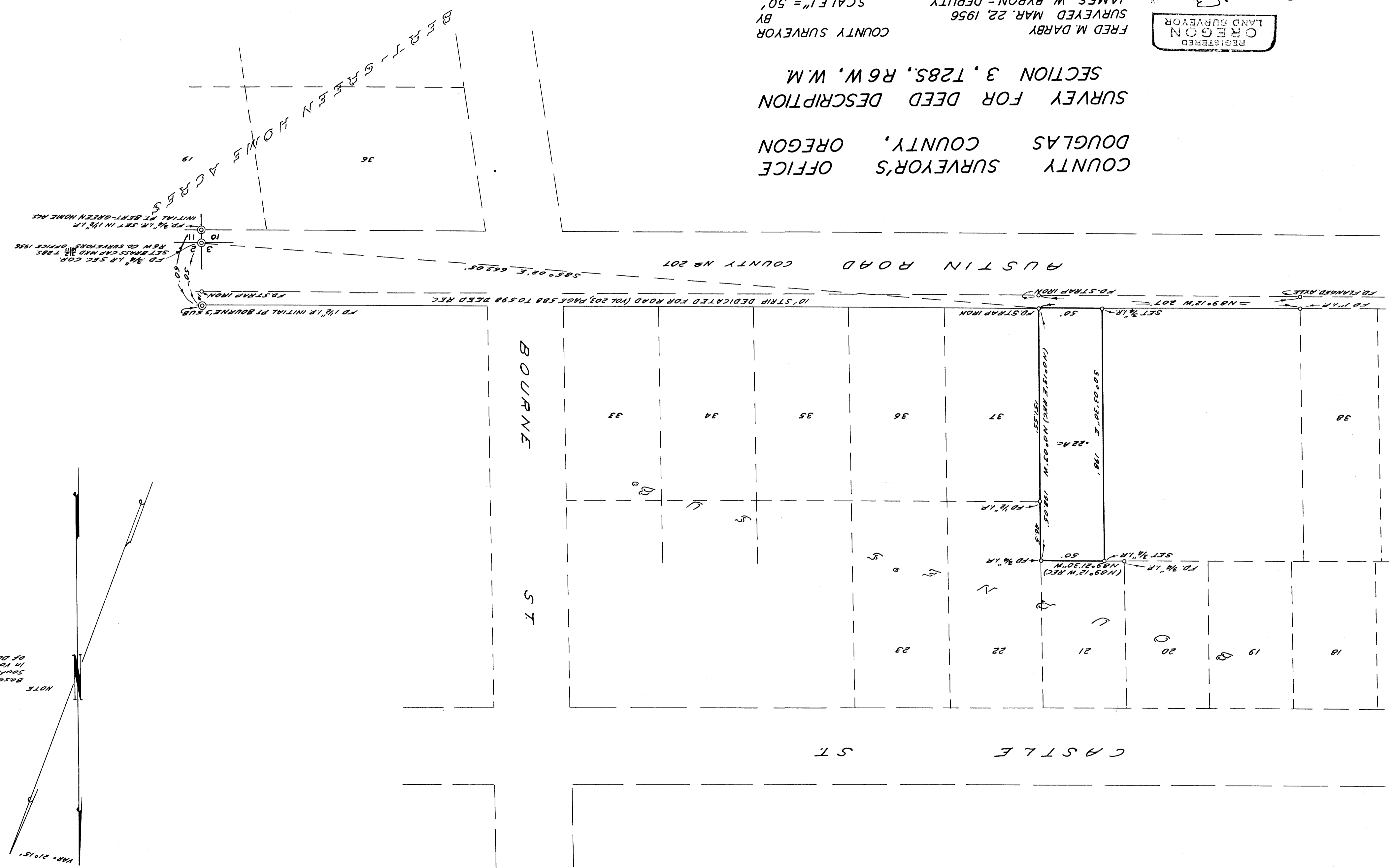


FRED M. DARBY  
COUNTY SURVEYOR  
SURVEYED MAR. 22, 1956  
BY  
JAMES W. BYRON - DEPUTY  
SCALE 1" = 50'  
SURVEYED FOR HOMER WYBRIGHT  
COUNTY SURVEYORS FILE DATA  
DO NOT REMOVE FROM OFFICE

COUNTY SURVEYOR'S OFFICE  
DOUGLAS COUNTY, OREGON  
SURVEY FOR DEED DESCRIPTION  
SECTION 3, T28S., R6W., W.M.



NOTE  
Base of Baring NB3°12'W along  
south line Bourn St as filed  
in Vol. 9 of Deeds from St. Records  
of Douglas County Oregon.

