

SCALE 8" = 1 MILE.

5

NOTE: Point indicated as "Rock" is a Rock set in old line fence. May have been set to replace original 1/4 corner post. No other evidences of original corner remain.

MAP SHOWING
SURVEYS IN SEC. 4 & 5 T275, R3W, W.M.
AND SEC 33 T265, R3W, W.M.

BEN. B. IRVING CIVIL ENGINEER & SURVEYOR
ROSEBURG, OREGON.

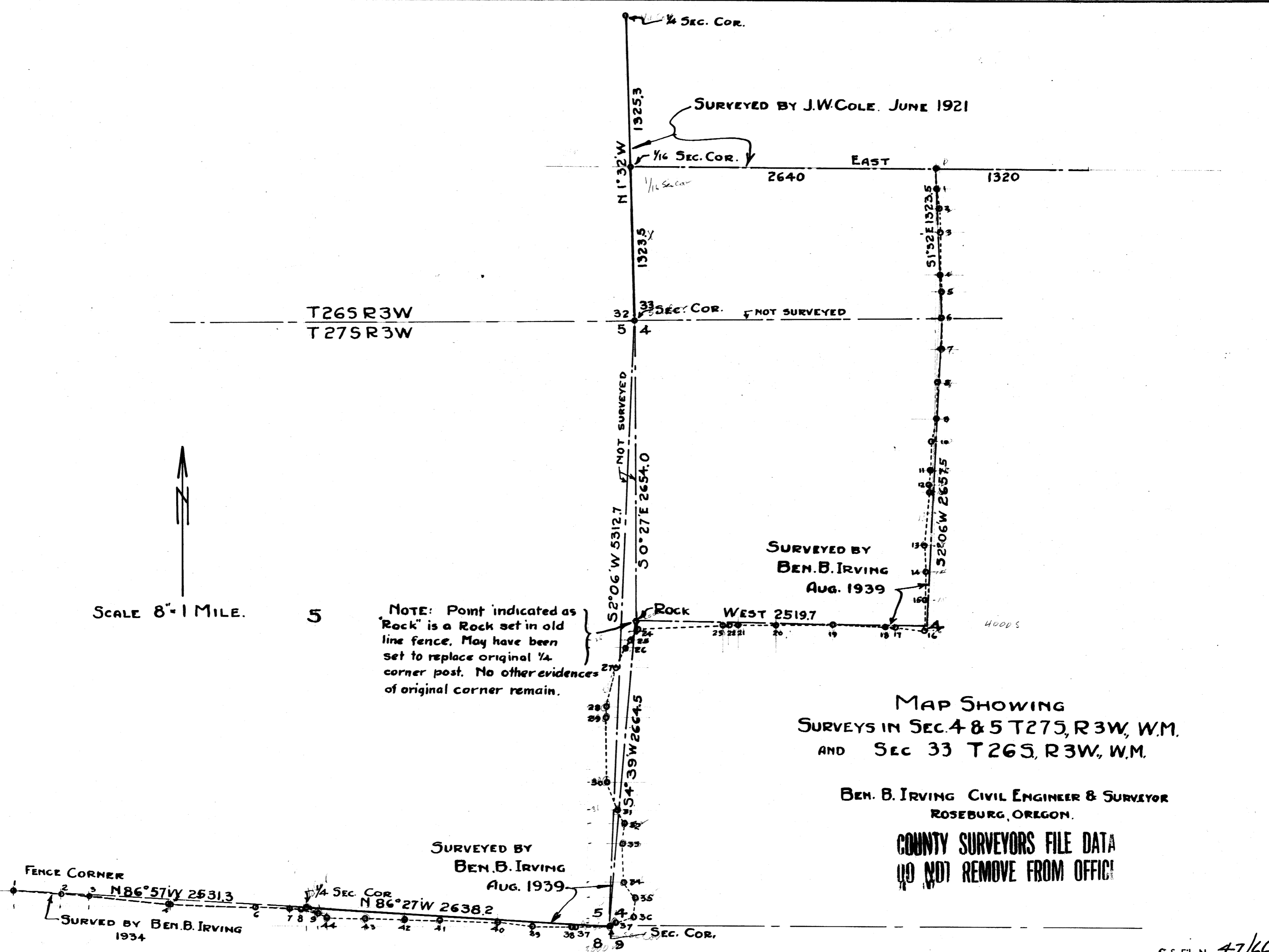
COUNTY SURVEYORS FILE DATA
DO NOT REMOVE FROM OFFICE

FENCE CORNER
N 86° 57' W 2531.3
SURVED BY BEN. B. IRVING
1934

SURVEYED BY
BEN. B. IRVING
AUG. 1939

SURVEYED BY
BEN. B. IRVING
AUG. 1939

SURVEYED BY J.W. COLE. JUNE 1921



M 2-30